

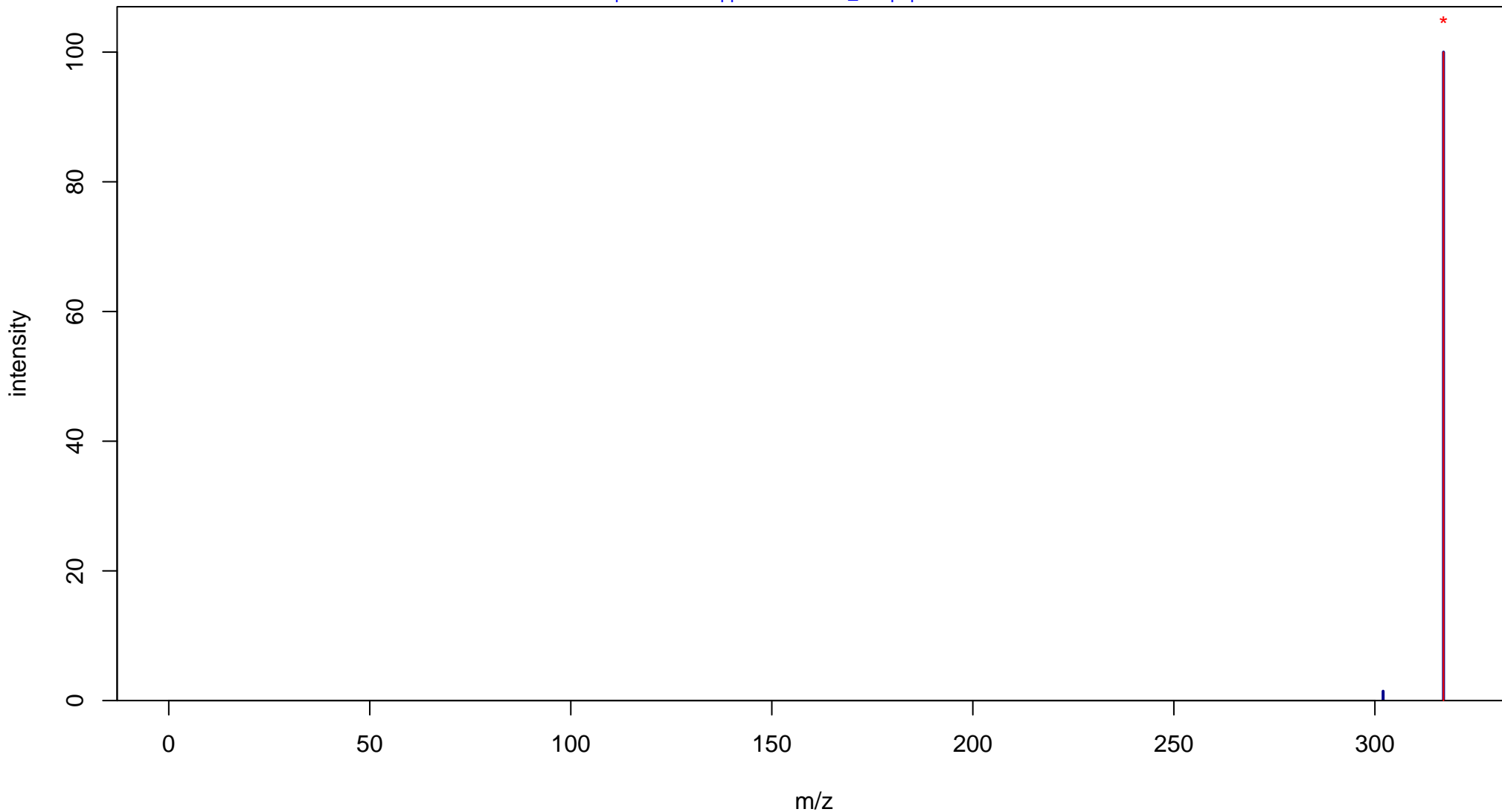
3-O-Methylquercetin

Mass: 316.0583 Formula: C₁₆H₁₂O₇

mode: + collisionE: 0V

METLIN ID: 51143 SIGMA Prod: 90081

http://metlin.scripps.edu/metabo_info.php?molid=51143



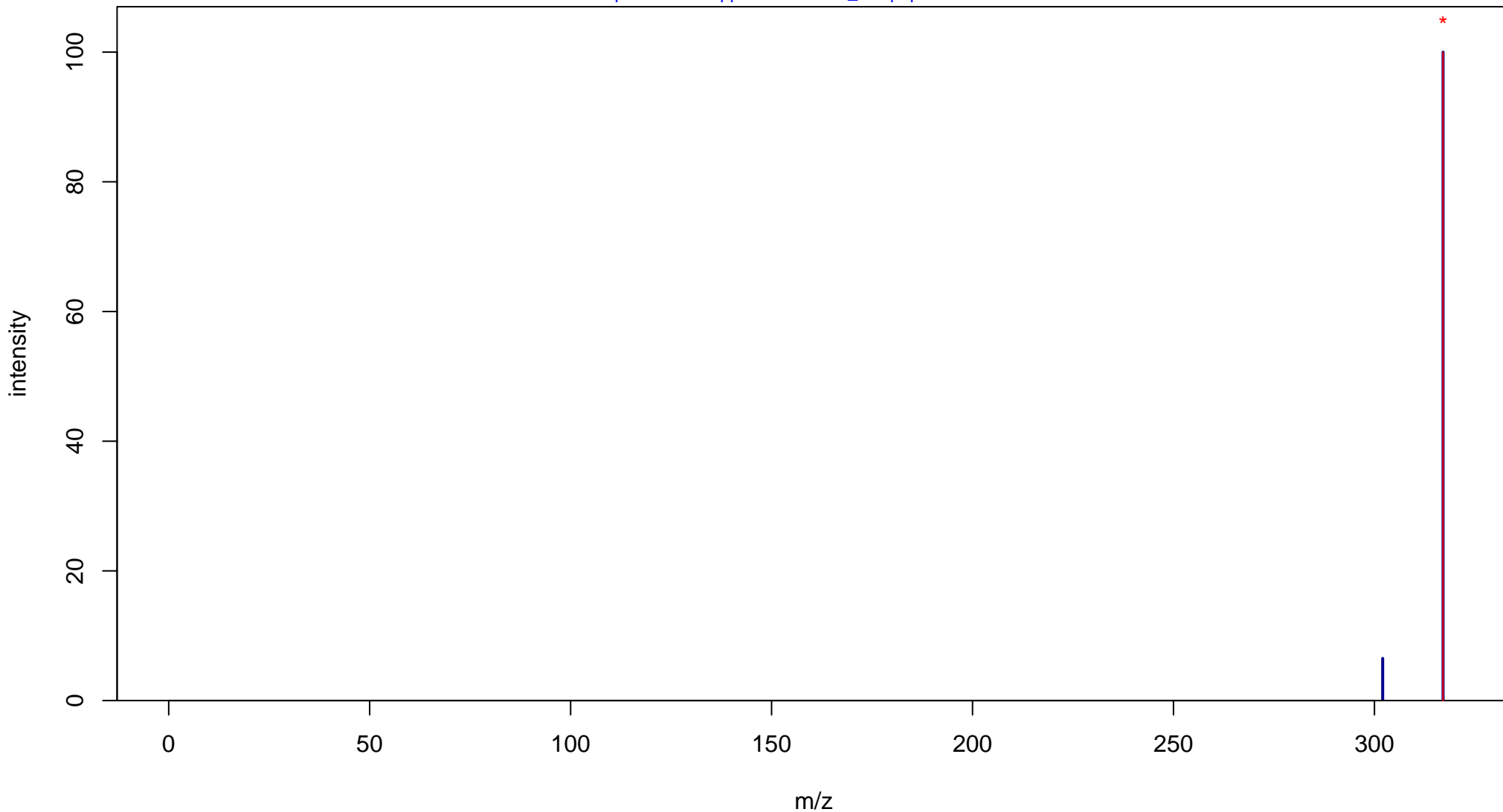
3-O-Methylquercetin

Mass: 316.0583 Formula: C₁₆H₁₂O₇

mode: + collisionE: 10V

METLIN ID: 51143 SIGMA Prod: 90081

http://metlin.scripps.edu/metabo_info.php?molid=51143



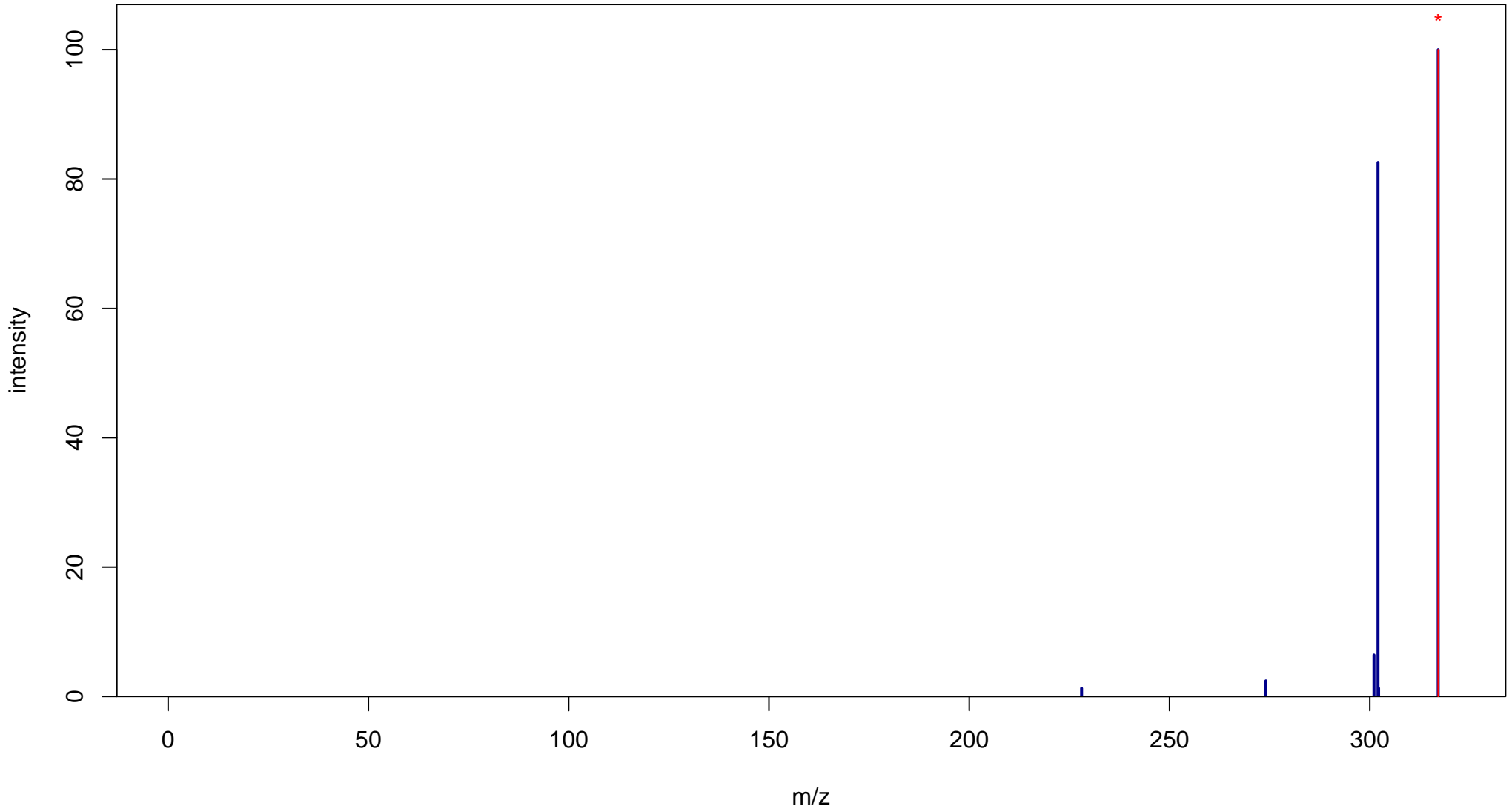
3-O-Methylquercetin

Mass: 316.0583 Formula: C₁₆H₁₂O₇

mode: + collisionE: 20V

METLIN ID: 51143 SIGMA Prod: 90081

http://metlin.scripps.edu/metabo_info.php?molid=51143



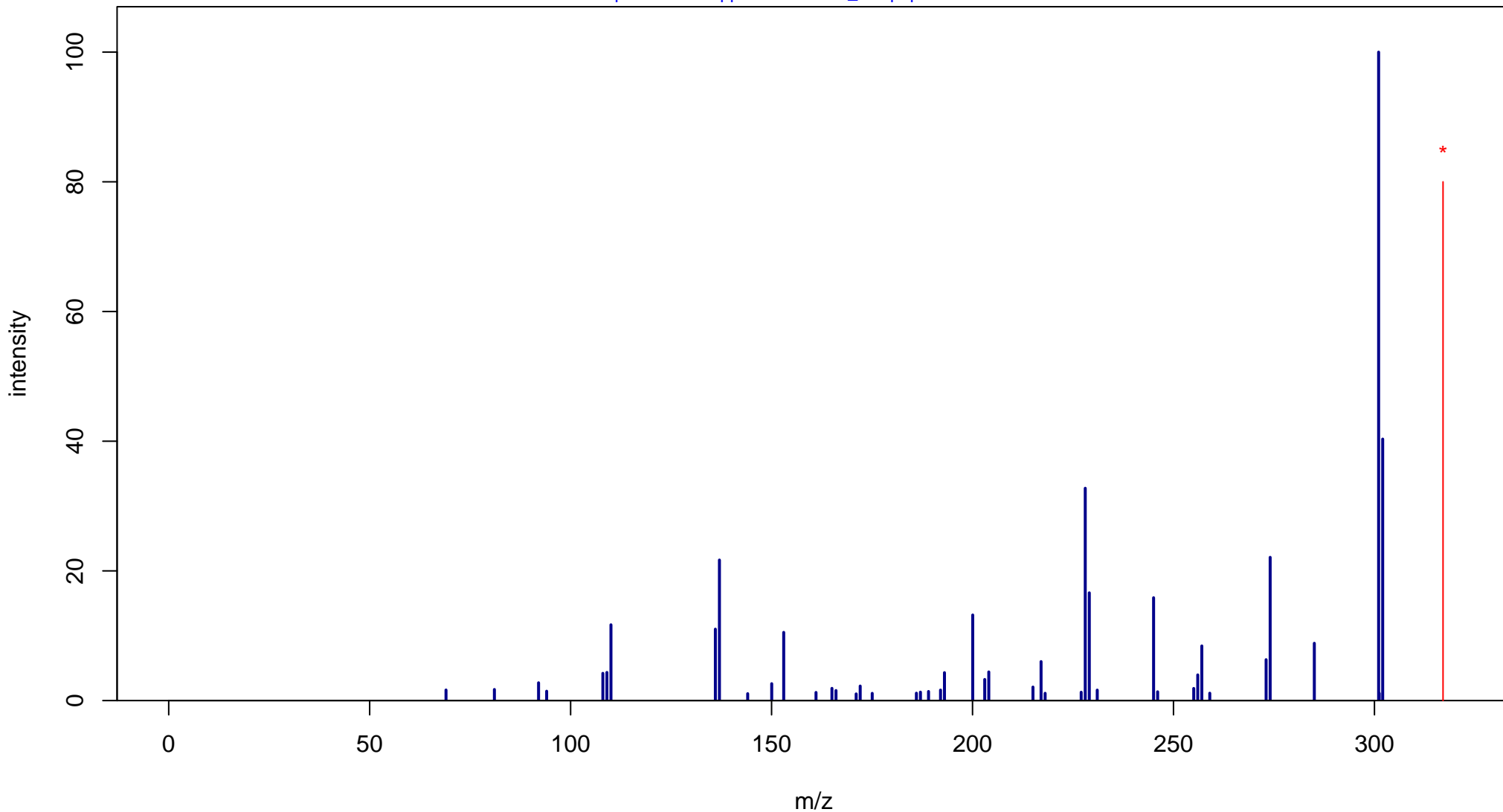
3-O-Methylquercetin

Mass: 316.0583 Formula: C₁₆H₁₂O₇

mode: + collisionE: 40V

METLIN ID: 51143 SIGMA Prod: 90081

http://metlin.scripps.edu/metabo_info.php?molid=51143



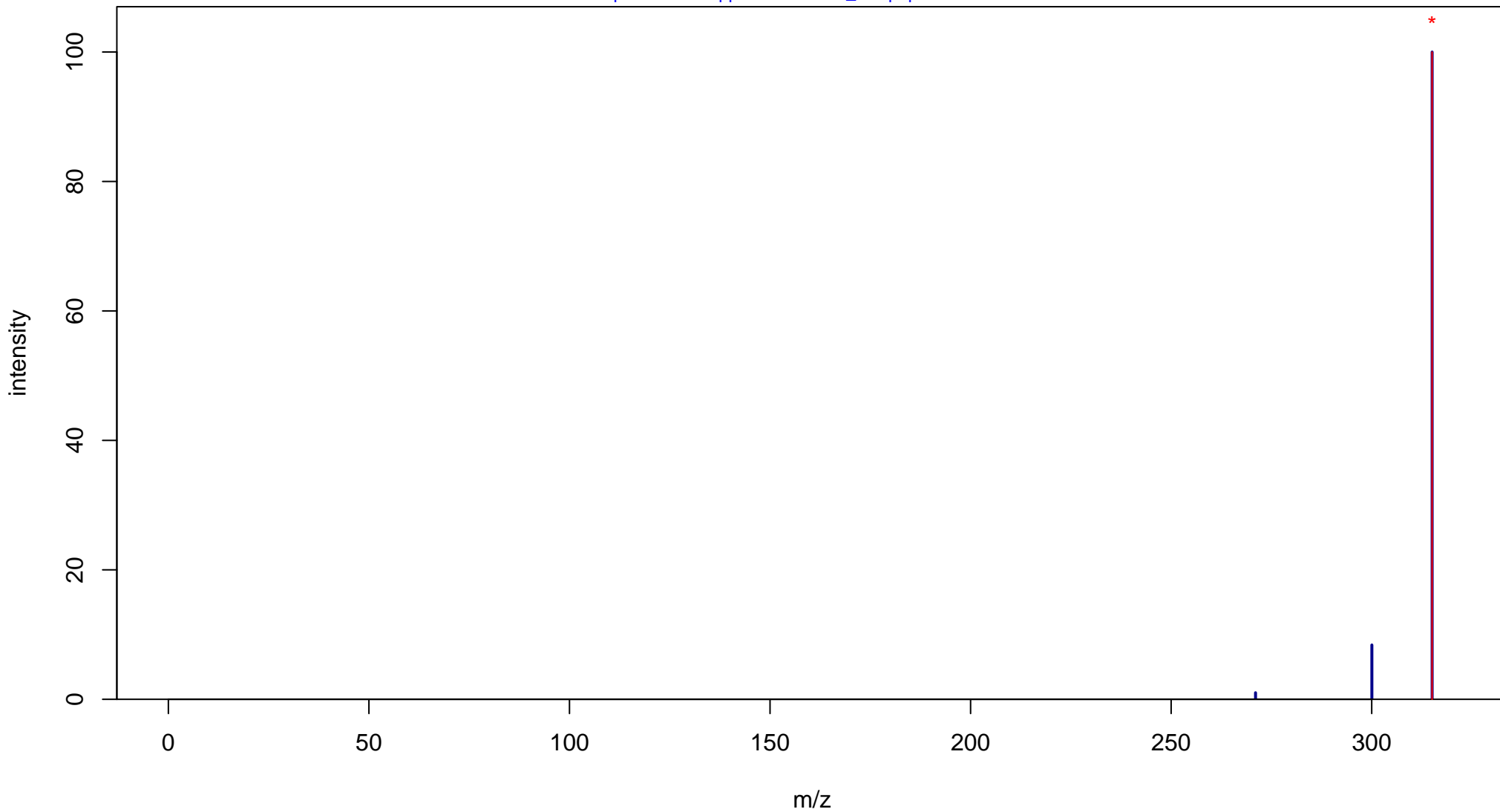
3-O-Methylquercetin

Mass: 316.0583 Formula: C₁₆H₁₂O₇

mode: - collisionE: 0V

METLIN ID: 51143 SIGMA Prod: 90081

http://metlin.scripps.edu/metabo_info.php?molid=51143



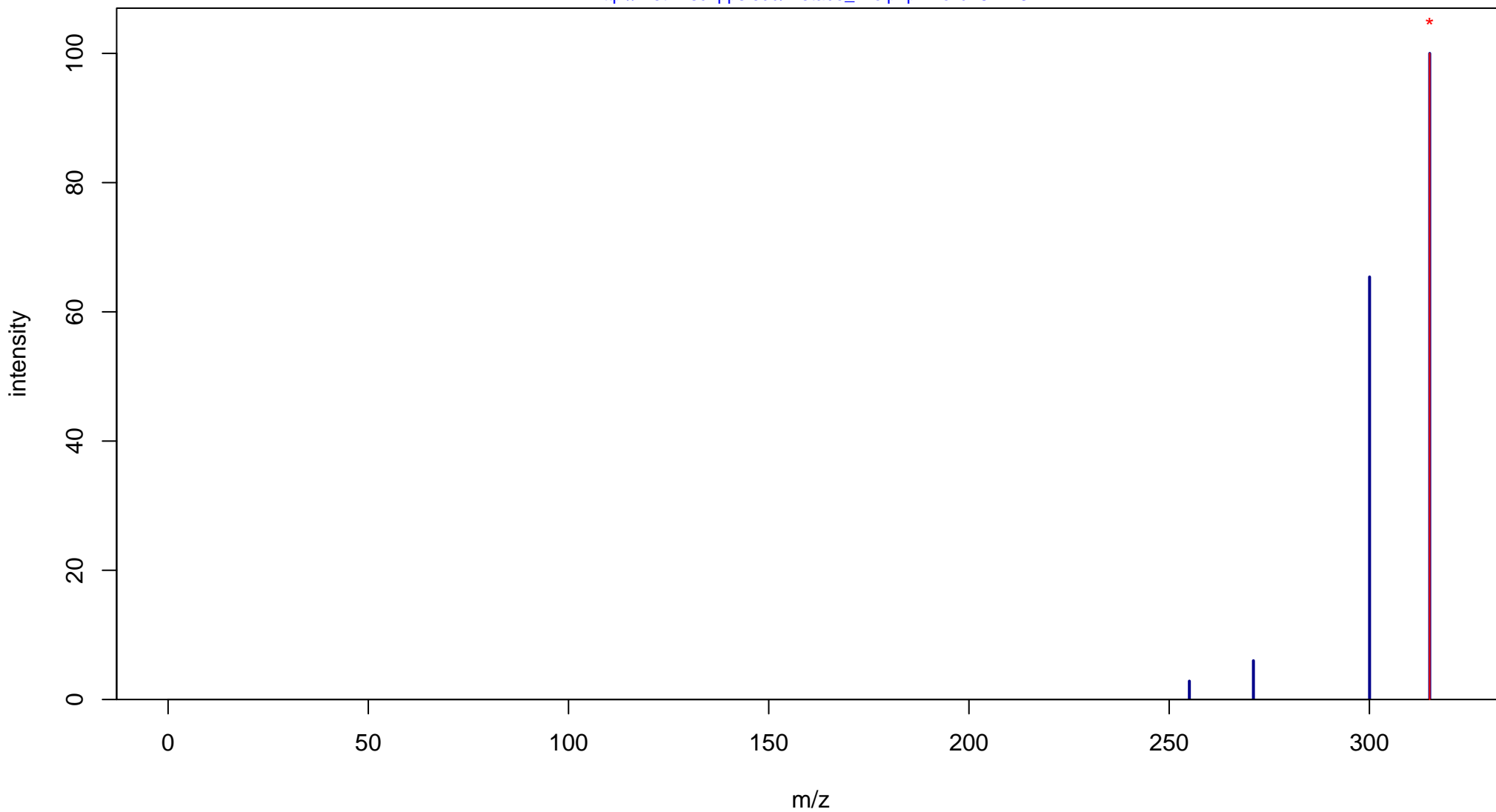
3-O-Methylquercetin

Mass: 316.0583 Formula: C₁₆H₁₂O₇

mode: - collisionE: 10V

METLIN ID: 51143 SIGMA Prod: 90081

http://metlin.scripps.edu/metabo_info.php?molid=51143



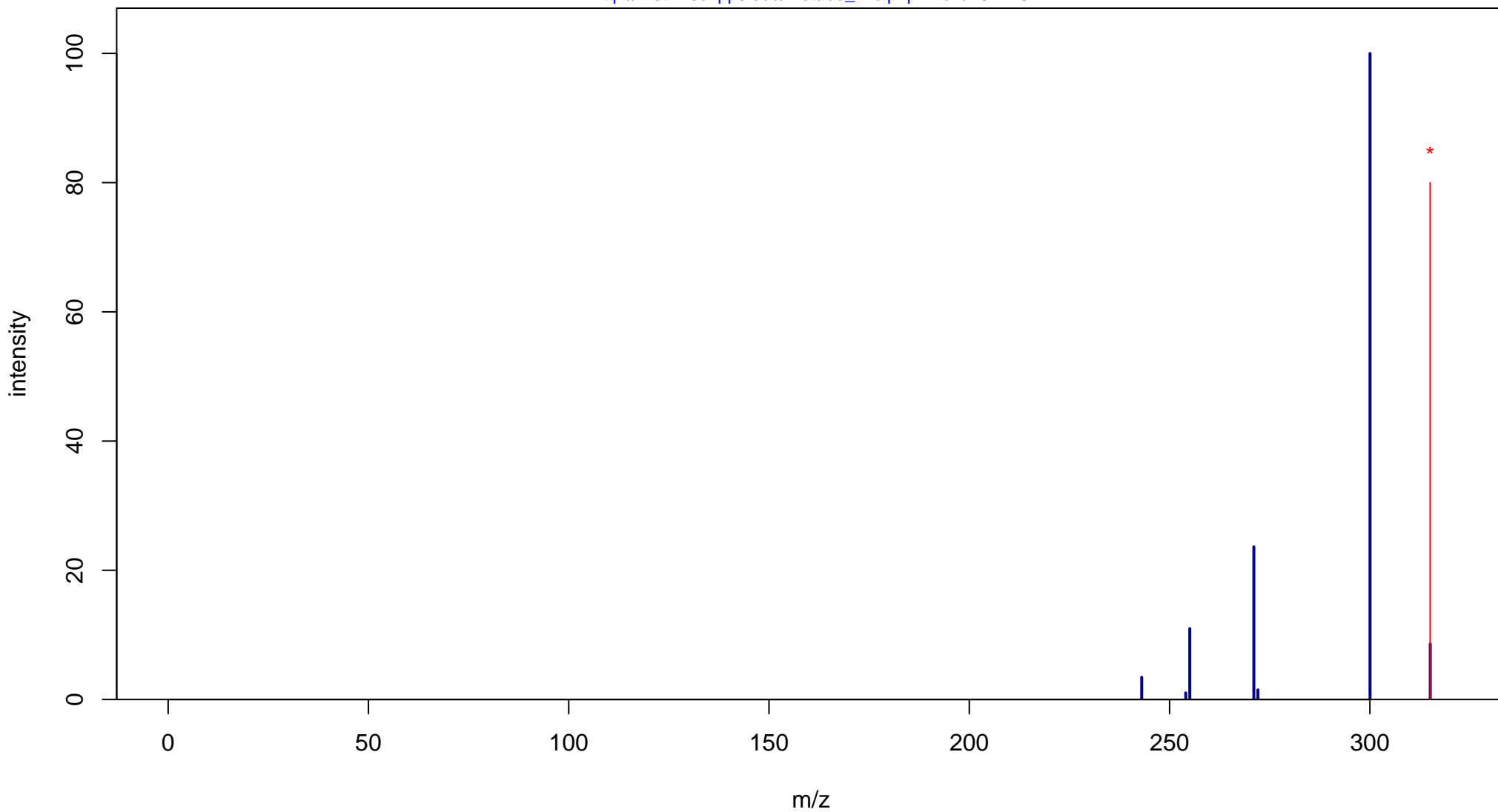
3-O-Methylquercetin

Mass: 316.0583 Formula: C₁₆H₁₂O₇

mode: - collisionE: 20V

METLIN ID: 51143 SIGMA Prod: 90081

http://metlin.scripps.edu/metabo_info.php?molid=51143



3-O-Methylquercetin

Mass: 316.0583 Formula: C₁₆H₁₂O₇

mode: - collisionE: 40V

METLIN ID: 51143 SIGMA Prod: 90081

http://metlin.scripps.edu/metabo_info.php?molid=51143

