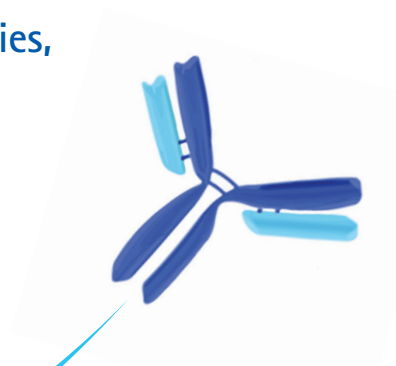


Depend(Ab)le

Stem Cell Antibodies

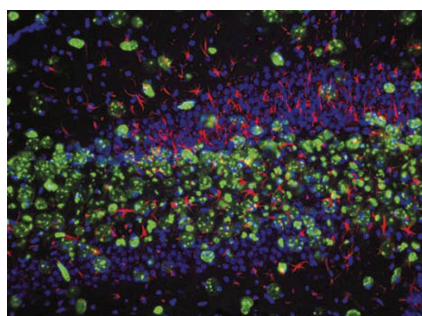
Your research can't wait. We deliver precision antibodies, validated in multiple applications. Guaranteed to perform.

EMD Millipore's extensive portfolio of validated antibodies help unravel the complexities of stem cell research. We provide widely published stem cell targets as well as a comprehensive set of research tools for characterizing stem cells. We are also continuously providing novel antibodies for emerging stem cell markers. Our characterization kits include panels of antibodies used to comprehensively analyze multiple differentiation pathways.



Validated Antibodies
for Key Research Areas:

- Cancer
- Cell Signaling
- Cell Structure
- ChIPAb+™/RIPAb+™
- Chromatin-Associated
- Epigenetics
- Neuroscience
- Stem Cell ✓



Immunolocalization of Nestin in mouse brain sections (hippocampus and CA3 region) from 21-day-old mice 72 hours after dosing with trimethyltin using Anti-Nestin Ab, clone rat-401 (MAB353, red). Rough ER stained with Nissl (blue), microglia stained with lectin IB4 (green), and glial fibrillary acidic protein and astrocytes stained with GFAP (also green).

Primary Antibodies for Stem Cell Research

The basic principle that underlies all immunochemical techniques is that a specific antibody will combine with its target antigen to generate an exclusive antibody-antigen complex. The specificity of primary antibodies, ideally monoclonal antibodies, enables them to be used for the initial detection of the target of interest in the study of cellular pathways and mechanisms, be they native or disrupted by disease states.

Primary Antibody	Species Reactivity	Key Applications	Host	Format	Type	Cat. No.
Anti-BCRP, clone BXP-21	H	IC, IH, IH(P), WB	M	CS	Mono	MAB4146
Anti-CD133, clone 13A4	M	FC, IH, IP, WB	R	Purified	Mono	MAB4310
Anti-Mitochondria, surface of intact mitochondria, clone 113-1	H	IF, IH, IH(P), IP	M	Purified	Mono	MAB1273
Anti-Nanog	H, M	FC, WB	Rb	Serum	Poly	AB9220
Anti-Nanog, NT	R, H, M	WB	Rb	Affinity purified	Poly	AB5731
Anti-Nestin	H	IC, IH, IH(P), WB	Rb	Serum	Poly	AB5922
Anti-Nestin, clone 10C2	H	IC, IH, IH(P), WB	M	Purified	Mono	MAB5326
Anti-Nestin, clone rat-401	M, R	IC, IH, IH(P), WB	M	Purified	Mono	MAB353
Anti-Nuclei, clone 235-1	H	IC, IH(P), IP	M	Purified	Mono	MAB1281
Anti-Nuclei, clone 3E1.3	H	IC, IH, FC	M	Purified	Mono	MAB4383
Anti-Oct-4	H, M	IC, IH, WB	Rb	Affinity purified	Poly	AB3209
Anti-Oct-4, clone 10H11.2	H	ELISA, FC, IC, WB	M	Purified	Mono	MAB4401
Anti-SOX17	H, M	ELISA, FC, IC, IF, IH, WB	Rb	Serum	Poly	09-038
Anti-SOX-2	H, M	IC, IH, WB	M	Purified	Mono	MAB4343
Anti-Stage-Specific Embryonic Antigen-1, clone MC-480	H, M, R	FC, IF, IH, IP	M	Purified	Mono	MAB4301
Anti-Stage-Specific Embryonic Antigen-3, clone MC-631	H, M	ELISA, FC, IH, IF	R	Purified	Mono	MAB4303
Anti-Stage-Specific Embryonic Antigen-4, clone MC-813-70	H, M	ELISA, FC, IH, IF	M	Purified	Mono	MAB4304
Anti-TRA-1-60, clone TRA-1-60	H	FC, IC, IF, IP, WB	M	Purified	Mono	MAB4360
Anti-TRA-1-81, clone TRA-1-81	H	FC, IC, IF, IP, WB	M	Purified	Mono	MAB4381
Anti-TRA-2-49, Liver/Bone/Kidney Alkaline Phosphatase, clone TRA-2-49/6E	Fe, H, Po, Rb	FC, IC, IF, IP	M	Alk Phos	Mono	MAB4349

For a complete offering of antibodies for stem cell research, please visit:
www.emdmillipore.com/stemcell

Secondary Antibodies for Stem Cell Research

Secondary antibodies are often used to amplify the detection of an antigen that a primary antibody is first bound to. It is therefore important to select a secondary antibody that has specificity for the species and isotype of the primary antibody. In addition, the secondary antibody must be conjugated to a suitable tag or label for optimal detection.

Secondary Antibody	Species Reactivity	Key Applications	Host	Isotype	Conj.	Cat. No.
Anti-Green Fluorescent Protein	Vrt	ELISA, IC, IH, WB	Rb			AB3080
Anti-Myc Tag, clone 4A6	H	ChIP-seq, IC, IF, IP, WB	M	IgG		05-724
Anti-SBP-tag, clone 20	H	IC, WB	M	IgG _{1κ}		MAB10764
Donkey Anti-Goat IgG, HRP conjugate, Species Adsorbed	Gt	ELISA, IH, WB	Dk	IgG	HRP	AP180P
Donkey Anti-Mouse IgG, FITC conjugate, Species Adsorbed	M	IF	Dk	IgG	FITC	AP192F
Donkey Anti-Mouse IgG, HRP conjugate, Species Adsorbed	M	ELISA, WB	Dk	IgG	HRP	AP192P
Donkey Anti-Rabbit IgG, HRP conjugate, Species Adsorbed	Rb	ELISA, WB	Dk	IgG	HRP	AP182P
Goat Anti-Human Ig κ chain, HRP conjugate, Species Adsorbed	H	ELISA	Gt	IgK	HRP	AP502P
Goat Anti-Human IgA, α-Chain Specific Alkaline Phosphatase Conjugate	H	EIA, IEP	Gt	IgA	Alk Phos	401132-1ML
Goat Anti-Human IgG, heavy and light chains	H	IP	Gt	IgG		AB22-2ML
Goat Anti-Mouse IgG, (H+L) FITC Conjugated	M	IF	Gt	IgG	FITC	AP124F
Goat Anti-Mouse IgG, Alkaline Phosphatase conjugate	M	ELISA, WB	Gt	IgG	Alk Phos	AP124A
Goat Anti-Mouse IgG, F(ab') ₂ , FITC conjugate	M	IF	Gt	IgG	FITC	AQ303F
Goat Anti-Mouse IgG, HRP conjugate	M	ELISA, IH, WB	Gt	IgG	HRP	12-349
Goat Anti-Mouse IgG, HRP conjugate, Species Adsorbed	M	ELISA, WB	Gt	IgG	HRP	AP181P
Goat Anti-Mouse IgG, Peroxidase Conjugated, H+L	M	ELISA, IH, WB	Gt	IgG	HRP	AP124P
Goat Anti-Rabbit IgG, HRP-conjugate	Rb	ELISA, IH, WB	Gt	IgG	HRP	12-348
Goat Anti-Rabbit IgG, Peroxidase Conjugated	Rb	ELISA, IH, WB	Gt	IgG	HRP	AP132P
Goat Anti-Rabbit γ-Globulin	Rb	IEP, RIA	Gt	IgG		539844-125U
His•Tag® Monoclonal		IP, IL, WB		IgG1		70796-3
Mouse Anti-Human IgG, Fc, all subclasses, clone MK1A6	H	ELISA, IF, HI, IH	M	IgG1		CBL101
Normal Rabbit IgG		IP, WB	Rb	IgG		12-370
Rabbit Anti-Goat IgG, HRP conjugate	Gt	ELISA, IH, WB	Rb	IgG	HRP	AP106P
S•Tag™ Monoclonal		IB, IF, IP		IgG _{2b}		71549-3

For a complete offering of antibodies for stem cell research, please visit:

www.emdmillipore.com/stemcell

Small Molecules for Stem Cell Research

Chemical genetics, in which function is disrupted using small molecules, can shed light on specific disease state mechanisms. Small-molecule compounds, including inhibitors, activators, and other pathway modulators, are critical cellular transduction research tools.

Small Molecule Inhibitor or Activator	Cat. No.
Cyclopamine-KAAD	239804
Forskolin, <i>Coleus forskohlii</i>	344270
InSolution™ MG-132	474791
LY 294002	440202
MG-132	474790
Okadaic Acid, <i>Prorocentrum sp.</i>	495604
Purmorphamine	540220
SB 203580	559389
TGF- β RI Kinase Inhibitor II	616452
UO126	662005

LEGEND:

Species: A=all, Am=amphibian, Av=avian, B=bovine, Ca=canine, Ch=chicken, Chp=chimpanzee, Dk=donkey, Dr=drosophila, Eu=eukaryote, F=fish, Fe=feline, Fg=frog, Ft=ferret, Gp=guinea pig, Gt=goat, Ht=hamster, H=human, Lz=lizard, Ma=mammal, Mk=monkey, Ml=mollusk, M=mouse, Op=opossum, Pl=green plant, Pm=primate, Po=pig, R=rat, Rb=rabbit, Rm=Rhesus macaque, Sal=salamander, Sh=sheep, Sq=squid, Su=sea urchin, T=tetrahymena, Vo=vole, Vrt=vertebrate, Xn=xenopus, Zf=zebrafish

Applications: CFA=cell function assay, ChIP=chromatin immunoprecipitation, ChIP-seq=chromatin immunoprecipitation sequencing, DB=dot blot, EIA=enzyme immunoassay, EMSA=electrophoretic mobility shift assay, FC=flow cytometry, FUNC=affects function, HI=hemagglutination inhibition, IAP=immunoaffinity purification, IB=immunoblotting, IC=immunocytochemistry, IEP=immunoelectrophoresis, IF=immunofluorescence, IH=immunohistochemistry, IH(P)=immunohistochemistry (paraffin), IL=immunolocalization, IP=immunoprecipitation, Mplex=multiplexing, NEUT=neutralizing, PIA=peptide inhibition assay, RIA=radioimmunoassay, RIP=RNA immunoprecipitation, WB=western blotting

Format: Alk Phos=alkaline phosphatase, CS=culture supernatant

Type: Mono=monoclonal antibody, Poly=polyclonal antibody

Isotype: IgA=immunoglobulin A, IgG=immunoglobulin G, IgK=immunoglobulin K

Conjugation: Alk Phos=alkaline phosphatase, FITC=fluorescein isothiocyanate, HRP=horseradish peroxidase



www.emdmillipore.com/Ab

To place an order or receive technical assistance

In the U.S. and Canada, call toll-free
1-800-645-5476

For other countries across Europe and the world, please visit: www.emdmillipore.com/offices

For Technical Service, please visit:
www.emdmillipore.com/techservice