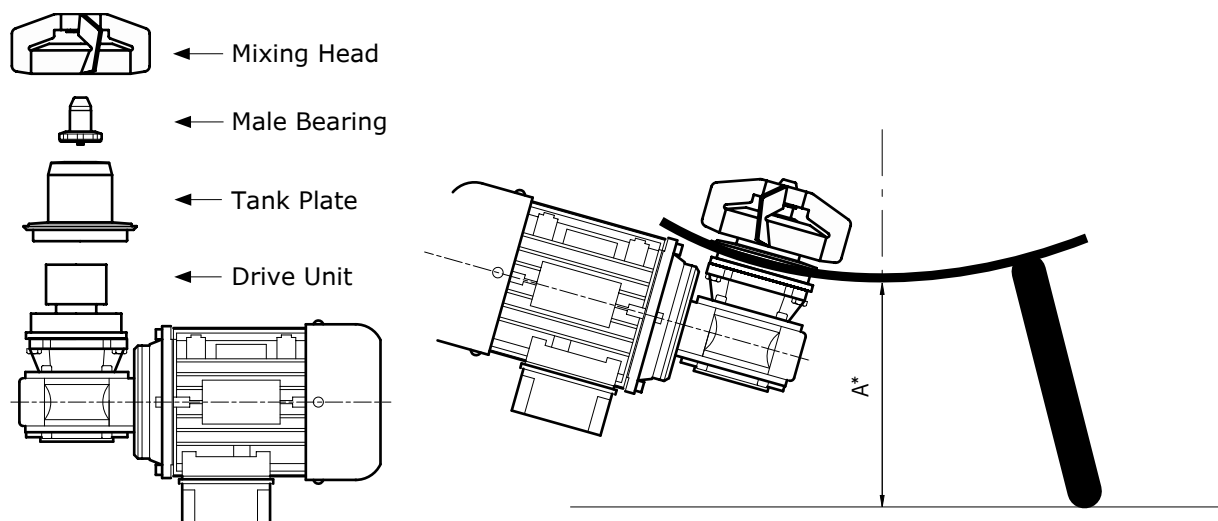


Specification Sheet

NovAseptic® Mixer, Mixer Assembly Recommendation, GMP

Product Description

The NovAseptic® mixers offer a complete solution for mixing throughout the process line and are designed for a wide variety of mixing applications in the pharmaceutical and biotechnology industries.



Assembly recommendation

Mixer Model	Mixing Head	Mixing Head, with Exchangeable Bearing, GMP	Male Bearing	Tank plate	Drive Unit	A*	Surface finish/Bearing Material
GMP50	GM05/12	GM05/15-322	GM05/24	GM05/33	GM05/4A01-6410	282	Surface finish
					GM05/4B01-6410		Tank Plate, Mixing Head, Male bearing: Grinded and Mechanically Polished
					GM05/4A11-6410	325	Mixing Head with Exchangeable bearing: Grinded and Electro-Polished
					GM05/4B11-6410		Bearing Material: Silicone Carbide (SiC)
	GM05/12EP	GM05/15-322	GM05/24EP	GM05/33	GM05/4A01-6410	282	Surface finish
					GM05/4B01-6410		Tank Plate: Grinded and Mechanically Polished
					GM05/4A11-6410	325	Mixing Head, Male bearing, Mixing Head with Exchangeable bearing: Grinded and Electro-Polished
					GM05/4B11-6410		Bearing Material: Silicone Carbide (SiC)
	GM05/12EPDC	GM05/15-326	GM05/24EPDC	GM05/33	GM05/4A01-6410	282	Surface finish
					GM05/4B01-6410		Tank Plate: Grinded and Mechanically Polished
					GM05/4A11-6410	325	Mixing Head, Male bearing, Mixing Head with Exchangeable bearing: Grinded and Electro-Polished
					GM05/4B11-6410		Bearing Material: Silicone Carbide (SiC) with Diamond Coating (UNDC)
GMP100	GM1/12	GM1/15-322	GM1/24	GM1/33	GM1/4A01-6410	280	Surface finish
					GM1/4B01-6410		Tank Plate, Mixing Head, Male bearing: Grinded and Mechanically Polished
					GM1/4A21-6410	365	Mixing Head with Exchangeable bearing: Grinded and Electro-Polished
					GM1/4B21-6410		Bearing Material: Silicone Carbide (SiC)
	GM1/12EP	GM1/15-322	GM1/24EP	GM1/33	GM1/4A01-6410	280	Surface finish
					GM1/4B01-6410		Tank Plate: Grinded and Mechanically Polished
					GM1/4A21-6410	365	Mixing Head, Male bearing, Mixing Head with Exchangeable bearing: Grinded and Electro-Polished
					GM1/4B21-6410		Bearing Material: Silicone Carbide (SiC)
	GM1/12EPDC	GM1/15-326	GM1/24EPDC	GM1/33	GM1/4A01-6410	280	Surface finish
					GM1/4B01-6410		Tank Plate: Grinded and Mechanically Polished
					GM1/4A21-6410	365	Mixing Head, Male bearing, Mixing Head with Exchangeable bearing: Grinded and Electro-Polished
					GM1/4B21-6410		Bearing Material: Silicone Carbide (SiC) with Diamond Coating (UNDC)
GMP500	GM5/120	GM5/15-322	GM510/24	GM5/33	GM5/4A01-6420	299	Surface finish
					GM5/4B01-6420		Tank Plate, Mixing Head, Male bearing: Grinded and Mechanically Polished
					GM5/4A21-6420	384	Mixing Head with Exchangeable bearing: Grinded and Electro-Polished
					GM5/4B21-6420		Bearing Material: Silicone Carbide (SiC)
	GM5/120EP	GM5/15-322	GM510/24EP	GM5/33	GM5/4A01-6420	299	Surface finish
					GM5/4B01-6420		Tank Plate: Grinded and Mechanically Polished
					GM5/4A21-6420	384	Mixing Head, Male bearing, Mixing Head with Exchangeable bearing: Grinded and Electro-Polished
					GM5/4B21-6420		Bearing Material: Silicone Carbide (SiC)
	GM5/120EPDC	GM5/15-326	GM510/24EPDC	GM5/33	GM5/4A01-6420	299	Surface finish
					GM5/4B01-6420		Tank Plate: Grinded and Mechanically Polished
					GM5/4A21-6420	384	Mixing Head, Male bearing, Mixing Head with Exchangeable bearing: Grinded and Electro-Polished
					GM5/4B21-6420		Bearing Material: Silicone Carbide (SiC) with Diamond Coating (UNDC)
GMP1000	GM10/120	GM10/15-322	GM510/24	GM10/33	GM10/4A01-6420	311	Surface finish
					GM10/4B01-6420		Tank Plate, Mixing Head, Male bearing: Grinded and Mechanically Polished
					GM10/4A21-6420	391	Mixing Head with Exchangeable bearing: Grinded and Electro-Polished
					GM10/4B21-6420		Bearing Material: Silicone Carbide (SiC)
	GM10/120EP	GM10/15-322	GM510/24EP	GM10/33	GM10/4A01-6420	311	Surface finish
					GM10/4B01-6420		Tank Plate: Grinded and Mechanically Polished
					GM10/4A21-6420	391	Mixing Head, Male bearing, Mixing Head with Exchangeable bearing: Grinded and Electro-Polished
					GM10/4B21-6420		Bearing Material: Silicone Carbide (SiC)
	GM10/120EPDC	GM10/15-326	GM510/24EPDC	GM10/33	GM10/4A01-6420	311	Surface finish
					GM10/4B01-6420		Tank Plate: Grinded and Mechanically Polished
					GM10/4A21-6420	391	Mixing Head, Male bearing, Mixing Head with Exchangeable bearing: Grinded and Electro-Polished
					GM10/4B21-6420		Bearing Material: Silicone Carbide (SiC) with Diamond Coating (UNDC)
GMP2000	GM20/12	GM20/15-322	GM20/24	GM20/33	GM20/4A01-6430	332	Surface finish
					GM20/4B01-6430		Tank Plate, Mixing Head, Male bearing: Grinded and Mechanically Polished
					GM20/4A21-6430	420	Mixing Head with Exchangeable bearing: Grinded and Electro-Polished
					GM20/4B21-6430		Bearing Material: Silicone Carbide (SiC)
	GM20/12EP	GM20/15-322	GM20/24EP	GM20/33	GM20/4A01-6430	332	Surface finish
					GM20/4B01-6430		Tank Plate: Grinded and Mechanically Polished
					GM20/4A21-6430	420	Mixing Head, Male bearing, Mixing Head with Exchangeable bearing: Grinded and Electro-Polished
					GM20/4B21-6430		Bearing Material: Silicone Carbide (SiC)
	GM20/12EPDC	GM200/15-326	GM20/24EPDC	GM20/33	GM20/4A01-6430	332	Surface finish
					GM20/4B01-6430		Tank Plate: Grinded and Mechanically Polished
					GM20/4A21-6430	420	Mixing Head, Male bearing, Mixing Head with Exchangeable bearing: Grinded and Electro-Polished
					GM20/4B21-6430		Bearing Material: Silicone Carbide (SiC) with Diamond Coating (UNDC)

*Note: Minimum distance to dismount the Drive Unit

Mixer Model	Mixing Head	Mixing Head, with Exchangeable Bearing, GMP	Male Bearing	Tank plate	Drive Unit	A*	Surface finish/Bearing Material	
GMP5000	GM50/12		GM50300/24		GM50/4A01-6440	332	Surface finish	
					GM50/4B01-6440		Tank Plate, Mixing Head, Male bearing: Grinded and Mechanically Polished	
					GM50/4A21-6440	420	Mixing Head with Exchangeable bearing: Grinded and Electro-Polished	
					GM50/4B21-6440		Bearing Material: Silicone Carbide (SiC)	
	GM50/12EP	GM50/15-322		GM50300/24EP	GM50/33	GM50/4A01-6440	332	Surface finish
						GM50/4B01-6440		Tank Plate: Grinded and Mechanically Polished
						GM50/4A21-6440	420	Mixing Head, Male bearing, Mixing Head with Exchangeable bearing: Grinded and Electro-Polished
						GM50/4B21-6440		Bearing Material: Silicone Carbide (SiC)
	GM50/12EPDC	GM50/15-326	GM50300/24EPDC			GM50/4A01-6440	332	Surface finish
						GM50/4B01-6440		Tank Plate: Grinded and Mechanically Polished
						GM50/4A21-6440	420	Mixing Head, Male bearing, Mixing Head with Exchangeable bearing: Grinded and Electro-Polished
						GM50/4B21-6440		Bearing Material: Silicone Carbide (SiC) with Diamond Coating (UNDC)
GMP10000	GM100/12		GM50300/24		GM100/4A01-6450	396	Surface finish	
					GM100/4B01-6450		Tank Plate, Mixing Head, Male bearing: Grinded and Mechanically Polished	
					GM100/4A21-6450	490	Mixing Head with Exchangeable bearing: Grinded and Electro-Polished	
					GM100/4B21-6450		Bearing Material: Silicone Carbide (SiC)	
	GM100/12EP	GM100/15-322		GM50300/24EP	GM100/33	GM100/4A01-6450	396	Surface finish
						GM100/4B01-6450		Tank Plate: Grinded and Mechanically Polished
						GM100/4A21-6450	490	Mixing Head, Male bearing, Mixing Head with Exchangeable bearing: Grinded and Electro-Polished
						GM100/4B21-6450		Bearing Material: Silicone Carbide (SiC)
	GM100/12EPDC	GM100/15-326	GM50300/24EPDC			GM100/4A01-6450	396	Surface finish
						GM100/4B01-6450		Tank Plate: Grinded and Mechanically Polished
						GM100/4A21-6450	490	Mixing Head, Male bearing, Mixing Head with Exchangeable bearing: Grinded and Electro-Polished
						GM100/4B21-6450		Bearing Material: Silicone Carbide (SiC) with Diamond Coating (UNDC)
GMP20000	GM200/12		GM50300/24		GM200/4A01-6465	435	Surface finish	
					GM200/4B01-6465		Tank Plate, Mixing Head, Male bearing: Grinded and Mechanically Polished	
					GM200/4A21-6465	530	Mixing Head with Exchangeable bearing: Grinded and Electro-Polished	
					GM200/4B21-6465		Bearing Material: Silicone Carbide (SiC)	
	GM200/12EP	GM200/15-322		GM50300/24EP	GM200/33	GM200/4A01-6465	435	Surface finish
						GM200/4B01-6465		Tank Plate: Grinded and Mechanically Polished
						GM200/4A21-6465	530	Mixing Head, Male bearing, Mixing Head with Exchangeable bearing: Grinded and Electro-Polished
						GM200/4B21-6465		Bearing Material: Silicone Carbide (SiC)
	GM200/12EPDC	GM200/15-326	GM50300/24EPDC			GM200/4A01-6465	435	Surface finish
						GM200/4B01-6465		Tank Plate: Grinded and Mechanically Polished
						GM200/4A21-6465	530	Mixing Head, Male bearing, Mixing Head with Exchangeable bearing: Grinded and Electro-Polished
						GM200/4B21-6465		Bearing Material: Silicone Carbide (SiC) with Diamond Coating (UNDC)
GMP30000	GM300/12		GM50300/24		GM300/4A01-6465	435	Surface finish	
					GM300/4B01-6465		Tank Plate, Mixing Head, Male bearing: Grinded and Mechanically Polished	
					GM300/4A21-6465	530	Mixing Head with Exchangeable bearing: Grinded and Electro-Polished	
					GM300/4B21-6465		Bearing Material: Silicone Carbide (SiC)	
	GM300/12EP	GM300/15-322		GM50300/24EP	GM300/33	GM300/4A01-6465	435	Surface finish
						GM300/4B01-6465		Tank Plate: Grinded and Mechanically Polished
						GM300/4A21-6465	530	Mixing Head, Male bearing, Mixing Head with Exchangeable bearing: Grinded and Electro-Polished
						GM300/4B21-6465		Bearing Material: Silicone Carbide (SiC)
	GM300/12EPDC	GM300/15-326	GM50300/24EPDC			GM300/4A01-6465	435	Surface finish
						GM300/4B01-6465		Tank Plate: Grinded and Mechanically Polished
						GM300/4A21-6465	530	Mixing Head, Male bearing, Mixing Head with Exchangeable bearing: Grinded and Electro-Polished
						GM300/4B21-6465		Bearing Material: Silicone Carbide (SiC) with Diamond Coating (UNDC)

*Note: Minimum distance to dismount the Drive Unit

Specifications

Net Weight (approximate)									
Mixer Assembly	GMP50	GMP100	GMP500	GMP1000	GMP2000	GMP5000	GMP10000	GMP20000	GMP30000
Weight kg	9	9.5	12	14	19.2	21.2	33.9	60	65

Recommended Mixer assembly parts		
	GMP—Catalogue No.	Specification Sheet—Lit. No.
Mixing Head	GM#/12, GM#/12EP, GM#/120 or GM#/120EP	SP1169EN00
Male Bearing	GM#/24 or GM#/24EP	SP1170EN00
Drive Unit	GM#/4#-64##	SP1004EN00
Tank Plate	GM#/33	SP1033EN00
Exchangeable mixing head and DC versions	GM#/15-322, GM#/15-326, GM#/12#DC, GM#/24DC	SP1011EN00 SP1013EN00 SP2255EN00

Recommended Accessory Parts		
	GMP—Catalogue No.	Specification Sheet—Lit. No.
Mixing Head Attractor	GT#/AW	SP1178EN00
Multi Tool for Mixing Head & Male Bearing	GT#/25	SP1031EN00
Tightening Tool for Male Bearing	GT#/26	SP1032EN00
Welding Tool Tank Plate Heatsink	G94-#	SP1179EN00
NovAseptic® Gauge 1, for Tank Plate, Outer Drive Head Control	G91-#	SP1199EN00
NovAseptic® Gauge 2, for Tank Plate, Mixing Head Control	G92-#	SP1200EN00
Integrated Speed Counter Kit	GM#/67	SP1144EN00

Specifications	
Environment Temperature*	0 to 40 °C (32 to 104 °F)
Operating Temperature*	
Operating Speed	Maximum operating speed has to be validated for each process individually, depending on volume, viscosity etc. A variable frequency drive (VFD) must be used with all NovAseptic® mixers.
Specification Sheet	Further information is available on the Specification Sheet of each NovAseptic® Mixer assembly part.
Quality Control	Our Quality Assurance System guarantees the control and traceability at all stages of the manufacturing.
Options	For non-standard NovAseptic® Mixer Options, please contact us for information.

* Note: The assembly parts of NovAseptic® Mixer may have different design temperature and/or pressure limits. The weakest part in the assembled product sets the final permitted design temperature and pressure limits.

Technical Assistance

For more information, please visit [SigmaAldrich.com](https://www.SigmaAldrich.com) for up-to-date worldwide contact information

