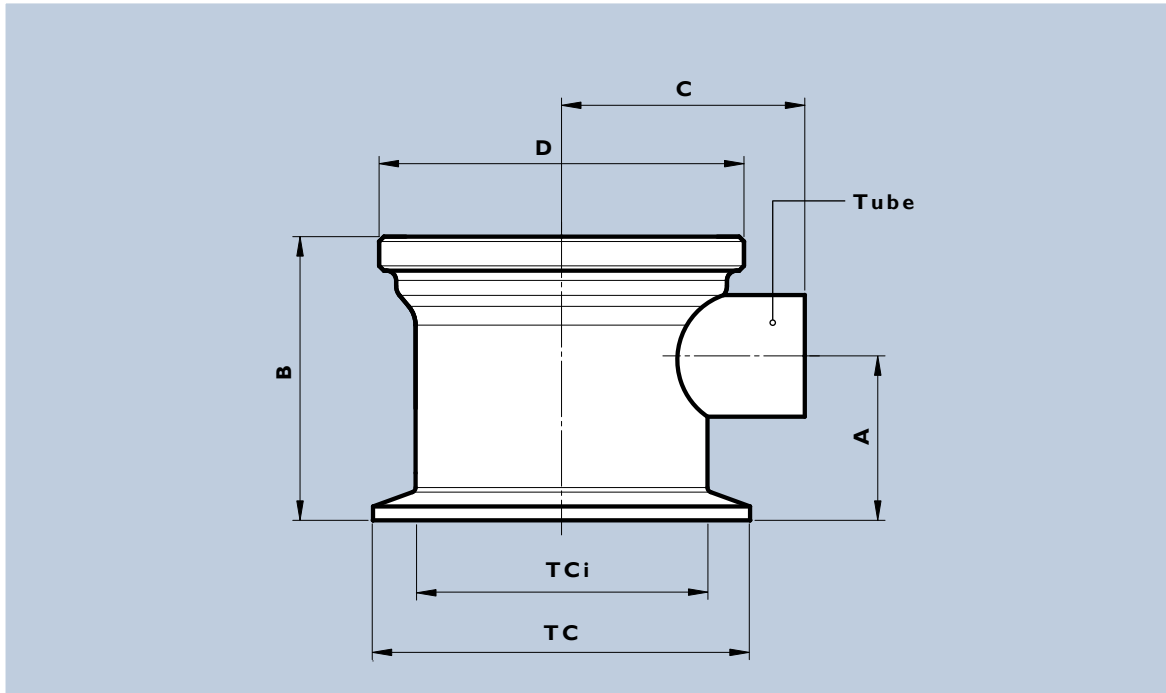


# Product Specification Sheet

The NA-Valve is specifically designed for aseptic applications and complies with the most stringent clean ability and sterilize ability requirements. The focus on aseptic design is a significant feature for all our valves. The NA-Valve is designed for minimum dead-leg, complete drain ability and high chemical resistance.

**Part No:** NA##/371-211 and NU###/371-211

**Description:** Valve Body, Shut off 90°, TC connectable



General measures (mm)						SMS Tube 3008 (mm)		US Tube ASTM A 269/270 (mm)		
A [inch]	B [inch]	C [inch]	D	TCi [inch]	TC [inch]	NA##	Tube	NU###	Size (inch)	Tube [inch]
34.0 [1.339]	59.0 [2.323]	50.0 [1.968]	TR75x2	60.5 [2.382]	77.5 [3.051]	NA25	25.0x1.2	NU100	1"	25.4x1.65 [1.0x0.065]
44.0 [1.732]	75.0 [2.953]	60.0 [2.362]	TR85x2	72.0 [2.885]	91.0 [3.583]	NA38	38.0x1.2	NU150	1½"	38.1x1.65 [1.5x0.065]

# Brief product information, NA##/371-211 and NU###/371-211

## Net volume of valve cavity with diaphragm applied

Valve body	NA25/ NU100	NA38/ NU150
Volume (ml)	30	80

## Approx. net weight

Valve body	NA25/ NU100	NA38/ NU150
Weight (kg)	0.6	1.2

## Material

	Bar stock		Tubing	
	Stainless steel in compliance with		Stainless steel in compliance with	
Material code	316L	EN 1.4404	TP 316L	EN 1.4404
Standard	ASME SA 479/ ASTM A 479	EN 10 272	ASTM A 269/270	EN10217-7 / EN10216-5

## Surface Roughness:

Internal surface (manually polished)  $Ra \leq 0,5\mu\text{m}$  [20 $\mu\text{-in}$ ] [Grit size: 240 $\mu\text{-in}$ ]

External surface  $Ra \leq 1,6\mu\text{m}$  [63 $\mu\text{-in}$ ]

## Design Temperature, Valve Body:

-80°C to 200°C [-112°F to 392°F]

## Design Pressure, Valve Body:

-1 to 10 bar(g) [-14.5psi to 101.5psi]

## Note!

The applied diaphragm and actuator may have different design temperature and/or pressure. The weakest part in the assembled product sets the final, permitted design temperature and pressure limits.

## Marking:

Each Valve Body is marked for full LOT traceability and heat No. according to NovAseptic QA routines.

## Packing:

All open ends on the Valve Body are protected with plastic covers on delivery. The Valve Body is also sealed in a plastic bag and packed in a closed box to reduce exposure.

## Quality Control:

The Quality Assurance Department guarantees the control and traceability at all stages of the manufacturing.

## NA-valve in Compliance With:

The product is classified in Europe, under SEP (Sound Engineering Practice) for PED Directive 97/23/EC. The NA-valve meets the requirements of the 3-A Sanitary Standards, marked on request. NA-Valve is in compliance with ASME BPE.

## Options and Non-Standard Product

For non-standard Valve Body Options, please contact NovAseptic for further information.