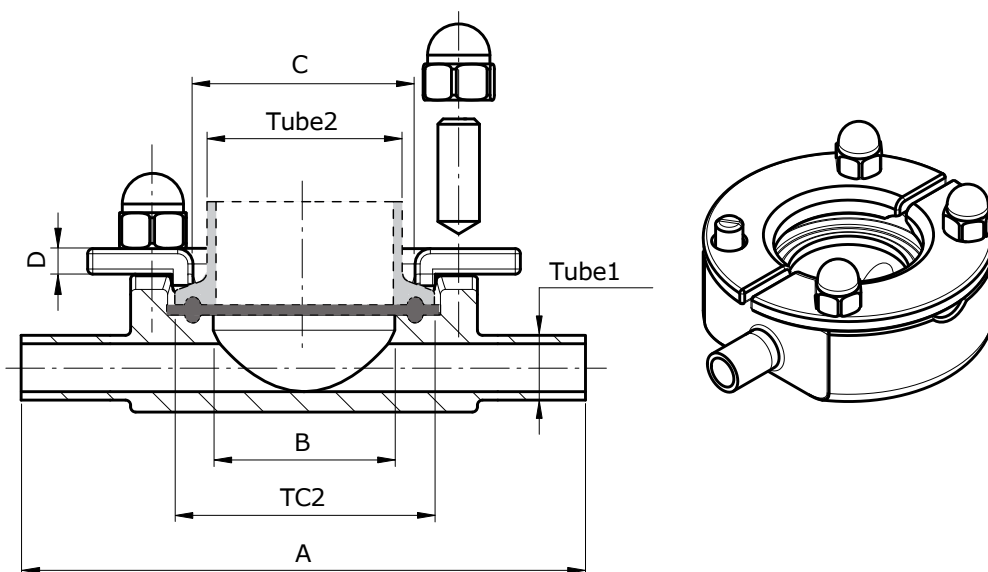


Specification Sheet

NovAseptic® Connector In-Line, Butt End According to Tube Standard ASTM® A269/270



Nominal Dimensions in mm (in.)

ANS5/###x###-311	Tube1 (ASTM®)	Tube2 (SMS 3008)	TC2	A	B	C	D	Acorn Nut Size	Stud Size
ANS5/127x94-311	12.7 x 1.65 (0.5 x 0.065)	38.0 x 1.2 (1.496 x 0.047)	50.5	110.0 (4.331)	35.6 (1.402)	43.8 (1.724)	5.0 (0.197)	M8	M8 x 20
ANS5/191x158-311	19.1 x 1.65 (0.75 x 0.065)	38.0 x 1.2 (1.496 x 0.047)	50.5	110.0 (4.331)	35.6 (1.402)	43.8 (1.724)	5.0 (0.197)	M8	M8 x 20
ANS5/254x221-311	25.4 x 1.65 (1.0 x 0.065)	38.0 x 1.2 (1.496 x 0.047)	50.5	110.0 (4.331)	35.6 (1.402)	43.8 (1.724)	5.0 (0.197)	M8	M8 x 20
ANS5/381x348-311	38.1 x 1.65 (1.5 x 0.065)	38.0 x 1.2 (1.496 x 0.047)	50.5	110.0 (4.331)	35.6 (1.402)	43.8 (1.724)	5.0 (0.197)	M8	M8 x 20

Specifications

Net Weight (approximate)				
Connector	ANS5/127x94-311	ANS5/191x158-311	ANS5/254x221-311	ANS5/381x348-311
Weight kg (lb)	1.1 (2.43)	1.3 (2.87)	1.5 (3.31)	1.7 (3.75)

Material				
	Welding Flange Stainless Steel in Compliance with		Tubing Stainless Steel in Compliance with	
Material Code	316L	EN 1.4435	TP316L	EN 1.4435
Technical Requirements	ASME® SA-479	EN 10272	ASTM® A269/270	EN 10217-1/EN 10216-5

Material				
	Locking Ring Stainless Steel in Compliance with		Bolt and Nut Stainless Steel in Compliance with	
Material Code	316L	EN 1.4404	EN 1.4401/EN 1.4301	
Technical Requirements	ASME® SA-479	EN 10272	EN 10269	

Additional Information	
Surface Roughness	Internal surface (manually polished) $Ra \leq 0.38 \mu\text{m}$ (15 μin)
Design Temperature	-80 to 200 °C (-112 to 392 °F)
Design Pressure	-1 to 7 bar(g) (-14.5 to 101 psi(g))
Note!	The applied gasket (not included) may have different design temperature and/or pressure limits than the NovAseptic® Connector. The weakest component in the assembled product determines the maximum design temperature and pressure limits.
Labeling	Each NovAseptic® Connector is labeled for full LOT traceability and heat No. according to our QA routines.
Packaging	All open ends on the NovAseptic® Connector are protected with plastic covers on delivery. The NovAseptic® Connector is pre-assembled and packaged in a closed box.
Quality Control	Our Quality Assurance System guarantees the control and traceability at all stages of the manufacturing.
Regulatory	<ul style="list-style-type: none"> The NovAseptic® Connector does comply for Europe with the relevant requirements in Annex I, Essential Safety Requirement of PED Directive 2014/68/EU. For liquid group I and gas group II, it falls in the art 4 §3 of the directive. The component has been designed and manufactured in accordance with the sound engineering practice of a Member State in order to ensure safe use.
Options	For non-standard NovAseptic® Connector Options, please contact us for further information.

Technical Assistance

For more information, please visit [SigmaAldrich.com](https://www.SigmaAldrich.com)
for up-to-date worldwide contact information

