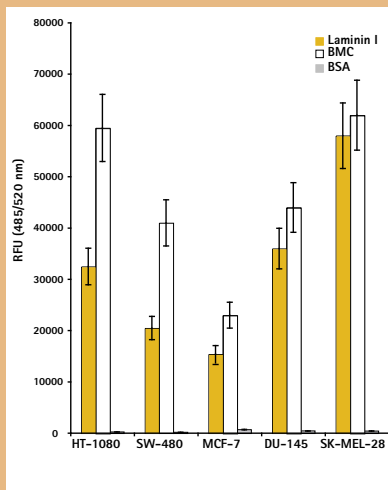


Detecting Cell Adhesion, Invasion & Migration

Cell Adhesion



Relative cell attachment of various cell lines to laminin I, BMC, and BSA measured using the InnoCyte™ ECM Cell Adhesion Assay, Laminin/Basement Membrane Complex (BMC), (Cat. No. CBA025). See user protocol for more details.

The InnoCyte™ ECM Cell Adhesion Assay, Laminin/Basement Membrane Complex (BMC), (Cat. No. CBA025), is designed for the analysis of relative cell attachment to extracellular matrix (ECM) proteins. The kit is provided with a 96-well strip plate coated with mouse laminin I and basement membrane complex. Cells are seeded in the coated wells and incubated at 37°C. Following incubation, the wells are washed briefly and attached cells are labeled with the green fluorescent dye, Calcein-AM. BSA-coated wells serve as a negative control and poly-L-lysine-coated wells serve as a positive control for general attachment. Relative cell attachment is assessed using a fluorescence plate reader.

InnoCyte™ ECM Cell Adhesion Assay, Laminin/Basement Membrane Complex (BMC)

Cat. No. CBA025

\$263

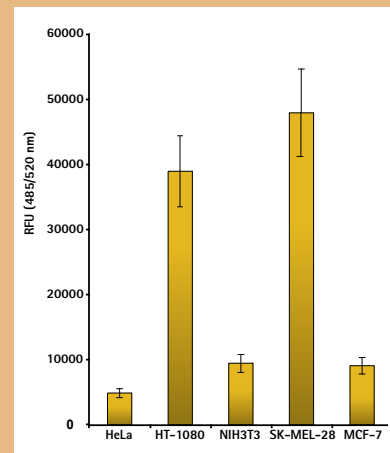
Cell Invasion

The InnoCyte™ Laminin-Based 96-Well Cell Invasion Assay, (Cat. No. CBA043), is designed to determine the invasive capacity of cells employing laminin as an invasion barrier. This kit can also be used to screen potential anti-metastatic agents *in vitro* in a convenient, high-throughput, 96-well format. The 8 µm membrane pore size is appropriate for many adherent cells including epithelial, endothelial, and fibroblast cells.

InnoCyte™ Laminin-based 96-Well Cell Invasion Assay

Cat. No. CBA043

\$385



Invasive capacity of various cell lines using the InnoCyte™ Laminin-Based 96-Well Cell Invasion Assay. See user protocol for more details.

EMD Biosciences

Calbiochem | Novabiochem | Novagen

Orders

Phone 800 854 3417

Fax 800 776 0999

Technical Support

Phone 800 628 8470

Web www.emdbiosciences.com

Also visit www.calbiochem.com/cellkits

See back for complete product listings.

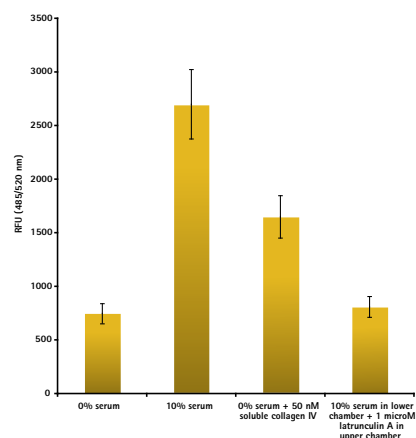


Cell Migration

The Calbiochem® InnoCyte™ Cell Migration Assay, 96 well, is designed to study the effects of various drugs or agents on cell motility or for identifying chemo-attractant molecules (chemotactic migration). Cells are placed in cell culture inserts in serum-free medium, while medium containing serum or other factors is placed in the wells of the plate; together the inserts and the plate form the upper and lower chambers. Cells that migrate through the membrane between the two chambers attach to the underside of the cell culture insert and are subsequently detached using cell detachment buffer. The cell detachment buffer containing calcein-AM fluorescent dye. The and the results are using a standard fluorescent plate reader.

InnoCyte™ Cell Migration Assay, 96 well

Cat. No. CBA010 \$295



Migration of human umbilical venous endothelial cells (HUVECs) measured using the Calbiochem® InnoCyte™ Cell Migration Assay, 96 well (Cat. No. CBA010). See user protocol for more details.

Related Products

Product	Cat. No.	Format	Form	Detection method	Assay time	Sample type	Price
InnoCyte™ ECM Cell Adhesion Assay, Collagen Type IV	CBA013	96-well plate	72 Tests	Fluorometric	2.5 h	Adherent cells	\$190
InnoCyte ECM Cell Adhesion Assay, Fibronectin	CBA011	96-well plate	72 Tests	Fluorometric	2.5 h	Adherent cells	\$157
InnoCyte ECM Cell Adhesion Assay, Vitronectin	CBA012	96-well plate	72 Tests	Fluorometric	2.5 h	Adherent cells	\$244
Cell Invasion Assay Kit (24-well)	QIA129	24-well plate	12 Tests	Fluorometric	24-48 h	Cells	\$325
InnoCyte Cell Migration Assay, 24-well plate	CBA017	24-well plate	12 Tests	Fluorometric	3-5 h	Adherent cells	\$295
InnoCyte Cell Migration Assay, 96-well	CBA010	96-well plate	96 Tests	Fluorometric	3-5 h	Adherent cells	\$295
InnoCyte ECM Cell Adhesion Assay, Galectin-1/Galectin-3	CBA026	96-well plate	72 Tests (36 Gal-1 and 36 Gal-3)	Fluorometric	2.5 h	Adherent cells	\$295
InnoCyte ECM Cell Adhesion Assay, Laminin/Basement Membrane Complex (BMC)	CBA025	96-well plate	72 Tests (36 Laminin and 36 BMC)	Fluorometric	2.5 h	Adherent cells	\$263
Galectin-3 ELISA Kit	QIA112	96-well plate	96 Tests	Colorimetric	4 h	Cell culture supernatants, plasma, serum, or other biological fluids	\$541
InnoCyte α2, α3, α5 Integrin Detection Kit	CBA037	96-well plate	96 Tests	Fluorometric	3 h	Cells	\$295
InnoCyte Laminin-based 96-Well Cell Invasion Assay	CBA043	96-well plate	96 Tests	Fluorometric	14-26 h	Cells	\$385

Also visit www.calbiochem.com/cellkits

Calbiochem is a brand of EMD Biosciences, an affiliate of Merck KGaA, Darmstadt, Germany

Printed in the USA

CB0214