

Ascentis[®] Express Family of HPLC Columns

Fused-Core[™] Technology Columns

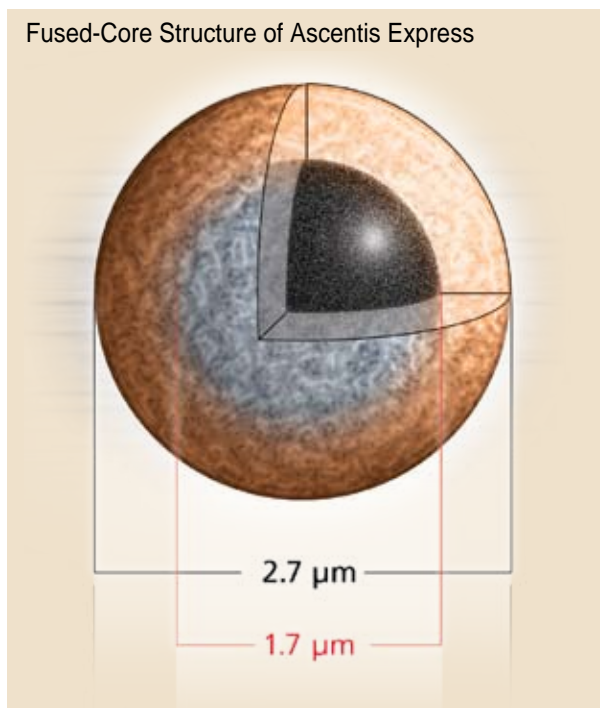
Extreme Performance on any System
Rugged, Lasts Longer than Sub-2 μm
A Family of Selectivities

... **Check**
 ... **Check**
 ... **Checkmate**

Introducing the newest member of the family.

Ascentis Express Phenyl-Hexyl provides the familiar selectivity of the phenyl-hexyl phase to the Fused-Core format. Now with five complementary phases, the Ascentis Express family of HPLC columns is the reigning champion.

Fused-Core Structure of Ascentis Express

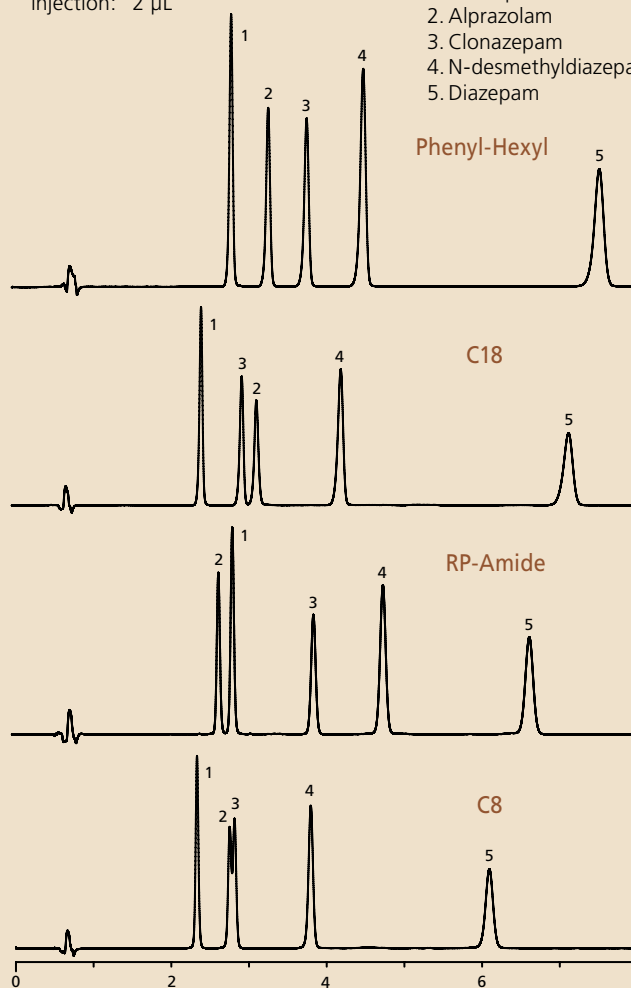


Selectivity Comparison of Ascentis Express Phases with Benzodiazepines

column: Ascentis Express, as indicated 10 cm x 3 mm I.D., 2.7 μm particles
 mobile phase A: water
 mobile phase B: acetonitrile
 mixing proportions: A:B = 65:35
 flow rate: 0.6 mL/min.
 pressure: 3000 psi total, 2360 psi column
 temp.: 35 $^{\circ}\text{C}$
 det.: UV, 250 nm
 injection: 2 μL

Sample (0.1 g/L ea.)

1. Oxazepam
2. Alprazolam
3. Clonazepam
4. N-desmethyldiazepam
5. Diazepam



G004806-4809

For more information, go to
www.sigma-aldrich.com/checkmate

Follow [www.twitter.com/HPLCSessions](https://twitter.com/HPLCSessions)
 a new way to communicate about HPLC

Ordering Information

ID (mm)	Length (cm)	Ascentis Express C18	Ascentis Express C8	Ascentis Express Phenyl-Hexyl	Ascentis Express HILIC	Ascentis Express RP-Amide
2.1	3	53802-U	53839-U	53332-U	53933-U	53910-U
2.1	5	53822-U	53831-U	53334-U	53934-U	53911-U
2.1	7.5	53804-U	53843-U	53335-U	53938-U	53912-U
2.1	10	53823-U	53832-U	53336-U	53939-U	53913-U
2.1	15	53825-U	53834-U	53338-U	53946-U	53914-U
3.0	3	53805-U	53844-U	53341-U	53964-U	53915-U
3.0	5	53811-U	53848-U	53342-U	53967-U	53916-U
3.0	7.5	53812-U	53849-U	53343-U	53969-U	53917-U
3.0	10	53814-U	53852-U	53345-U	53970-U	53918-U
3.0	15	53816-U	53853-U	53346-U	53972-U	53919-U
4.6	3	53818-U	53857-U	53347-U	53974-U	53921-U
4.6	5	53826-U	53836-U	53348-U	53975-U	53922-U
4.6	7.5	53819-U	53858-U	53351-U	53977-U	53923-U
4.6	10	53827-U	53837-U	53352-U	53979-U	53929-U
4.6	15	53829-U	53838-U	53353-U	53981-U	53931-U

Supelco offers many ways to easily place your order or inquire about an existing order. You can call, fax, or visit our web site 24 hours a day, 7 days a week.

Please contact us at:

Phone: 800-247-6628 / 800-325-3010 / 814-359-3441

Fax: 800-325-5052 / 814-359-5459

Web: sigma-aldrich.com/supelco

For more information on Ascentis Express HPLC Columns, call our technical experts at **800-359-3041/814-359-3041** or visit sigma-aldrich.com/express

Ascentis is a registered trademark of Sigma-Aldrich Biotechnology LP.

Fused-Core is a trademark of Advanced Materials Technology, Inc.

World Headquarters

3050 Spruce St., St. Louis, MO 63103
(314) 771-5765
sigma-aldrich.com

Order/Customer Service (800) 325-3010 • Fax (800) 325-5052

Technical Service (800) 325-5832 • sigma-aldrich.com/techservice

Development/Custom Manufacturing Inquiries SAFC® (800) 244-1173

*Accelerating Customers'
Success through Innovation and
Leadership in Life Science,
High Technology and Service*

©2009 Sigma-Aldrich Co. All rights reserved. SIGMA, SAFC, SAFC®, SIGMA-ALDRICH, ALDRICH, FLUKA, and SUPELCO are trademarks belonging to Sigma-Aldrich Co. and its affiliate Sigma-Aldrich Biotechnology, L.P. Sigma brand products are sold through Sigma-Aldrich, Inc. Sigma-Aldrich, Inc. warrants that its products conform to the information contained in this and other Sigma-Aldrich publications. Purchaser must determine the suitability of the product(s) for their particular use. Additional terms and conditions may apply. Please see reverse side of the invoice or packing slip.

LRM
T409120