

For life science research only.
Not for use in diagnostic procedures.



DNA Molecular Weight Marker XVII

500 bp ladder

 **Version: 09**

Content Version: August 2021

Fragment sizes: 0.5 to 5.0 kbp

Cat. No. 11 855 646 001 50 µg
 200 µl
 50 gel lanes

Store the product at –15 to –25°C.

1.	General Information	3
1.1.	Contents	3
1.2.	Storage and Stability	3
	Storage Conditions (Product)	3
1.3.	Additional Equipment and Reagent required	3
1.4.	Application	3
2.	How to Use this Product	4
2.1.	Before you Begin	4
	General Considerations	4
	Size distribution	4
3.	Results	4
	Typical analysis	4
4.	Supplementary Information	5
4.1.	Conventions	5
4.2.	Changes to previous version	5
4.3.	Ordering Information	5
4.4.	Trademarks	6
4.5.	License Disclaimer	6
4.6.	Regulatory Disclaimer	6
4.7.	Safety Data Sheet	6
4.8.	Contact and Support	6

1. General Information

1.1. Contents

Vial / bottle	Label	Function / description	Content
1	DNA Molecular Weight Marker XVII	<ul style="list-style-type: none"> Ready-to-use solution in 10 mM Tris-HCl, 1 mM EDTA, pH 8.0, (250 µg/ml). 50 µg corresponds to 1 A_{260} unit. 	1 Vial, 50 µg (200 µl)

1.2. Storage and Stability

Storage Conditions (Product)

When stored at –15 to –25°C, the product is stable through the expiry date printed on the label.

Vial / bottle	Label	Storage
1	DNA Molecular Weight Marker XVII	Store at –15 to –25°C. After thawing, store at +2 to +8°C. ⚠ Avoid repeated freezing and thawing.

1.3. Additional Equipment and Reagent required

For size determination

- DNA Molecular Weight Marker XIII (50 bp ladder)*
- DNA Molecular Weight Marker XIV (100 bp ladder)*
- DNA Molecular Weight Marker XVI (250 bp ladder)*

1.4. Application

Use DNA Molecular Weight Marker XVII as a size standard for DNA in agarose gels.

- The 500 bp ladder allows accurate sizing of DNA fragments generated by PCR or restriction digest separated on agarose gels.
- Use in conjunction with DNA Molecular Weight Marker XIII (50 bp ladder)*, DNA Molecular Weight Marker XIV (100 bp ladder)*, and DNA Molecular Weight Marker XVI (250 bp ladder)* for precise size determination.

2. How to Use this Product

2.1. Before you Begin

General Considerations

Size distribution

Fragment mixture prepared by cleavage of specially constructed plasmids with endonucleases. The mixture contains 10 blunt-ended, double-stranded DNA fragments with the following base pair lengths (1 base pair = 660 daltons).

bp									
5,000	4,500	4,000	3,500	3,000	2,500	2,000	1,500	1,000	500

The 2,000 and 4,000 bp banding pattern are 3 times brighter. Electrophoretic separation of this molecular weight marker results in a regular pattern.

3. Results

Typical analysis

The DNA fragment mixture shows the typical pattern of 10 bands in agarose gel electrophoresis, see Figure 1.

- After gel electrophoresis of 1 µg of the fragment mixture in a 0.7% Agarose MP* gel, 10 bands are visible.

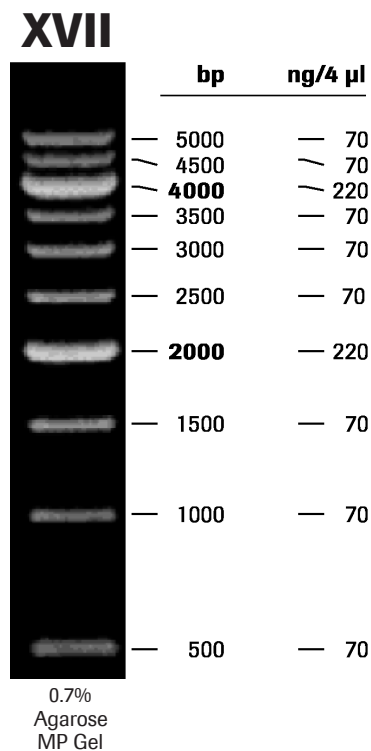


Fig. 1: Separation of 1 µg DNA Molecular Weight Marker XVII on a 0.7% Agarose MP gel, stained with ethidium bromide.

4. Supplementary Information

4.1. Conventions

To make information consistent and easier to read, the following text conventions and symbols are used in this document to highlight important information:

Text convention and symbols

 *Information Note: Additional information about the current topic or procedure.*

 **Important Note: Information critical to the success of the current procedure or use of the product.**

① ② ③ etc. Stages in a process that usually occur in the order listed.

① ② ③ etc. Steps in a procedure that must be performed in the order listed.

* (Asterisk) The Asterisk denotes a product available from Roche Diagnostics.

4.2. Changes to previous version

Layout changes.

Editorial changes.

4.3. Ordering Information

Product	Pack Size	Cat. No.
Reagents, kits		
DNA Molecular Weight Marker XIII	50 µg, 200 µl, 50 gel lanes	11 721 925 001
DNA Molecular Weight Marker XIV	50 µg, 200 µl, 50 gel lanes	11 721 933 001
DNA Molecular Weight Marker XVI	50 µg, 200 µl, 50 gel lanes	11 855 638 001
Agarose MP	100 g	11 388 983 001
	500 g	11 388 991 001

4. Supplementary Information

4.4. Trademarks

All product names and trademarks are the property of their respective owners.

4.5. License Disclaimer

For patent license limitations for individual products please refer to:

List of biochemical reagent products.

4.6. Regulatory Disclaimer

For life science research only. Not for use in diagnostic procedures.

4.7. Safety Data Sheet

Please follow the instructions in the Safety Data Sheet (SDS).

4.8. Contact and Support

To ask questions, solve problems, suggest enhancements or report new applications, please visit our **Online Technical Support Site.**

To call, write, fax, or email us, visit **sigma-aldrich.com**, and select your home country. Country-specific contact information will be displayed.

