

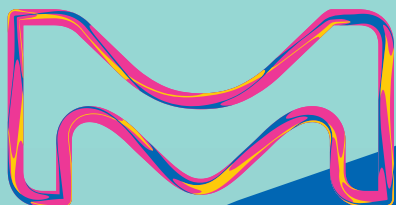
2024-25

Analyte Quarterly



Beyond Biomarkers

Keep your focus on the next stage. Our rigorously tested and limitation-lifting immunoassay platforms provide you with all the AssayAbilities, including Compelling PlexAbility, to take your biomarker research further.



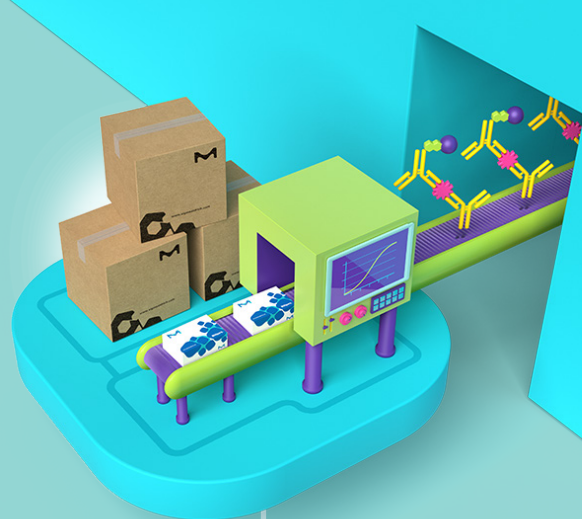
MilliporeSigma is the U.S. and Canada Life Science business of Merck KGaA, Darmstadt, Germany.

Millipore®

Preparation, Separation,
Filtration & Testing Products

Beyond Biomarkers

We are committed to delivering the best possible immunoassays for your research needs. Whether you are using our industry-leading MILLIPLEX® multiplex panels to broadly survey multiple analytes, performing femtogram/mL biomarker analysis using the SMC® ultrasensitive immunoassay platform, or examining single proteins with our tried-and-true ELISAs and RIAs, you can confidently expect reliable measurements, a simplified user experience, and knowledgeable scientific partners to help drive your biomarker project from hypothesis to publication.



Designed Reliability

Our Conferma® ELISAs are engineered for endogenous detection and lot-to-lot consistency of routine-use biomarkers to keep your data reproducible, run after run.



Genuine Flexibility

Our industry-leading MILLIPLEX® multiplex assays for the Luminex® platform give you the FlexAbility to select your combination of biomarkers to simultaneously analyze with ease.



Next-Level Detectability

Our ultrasensitive SMC® kits for the SMCxPRO® platform take your research to the next level by detecting biomarkers down to fg/mL levels.



Complete Compareability

Our Belysa® Immunoassay Curve Fitting Software helps you quickly compare your standard and sample curves with ease, confirming that your methods and plates ran consistently.



Expert Customability

Our Custom Assay Development & Innovation (CADI) team of experienced scientists partner with you to develop custom immunoassays for your biomarker(s) of interest, accelerating your projects from discovery to clinical trials.



Keep your focus on the next stage.

Immunoassays at a Glance

	MILLIPLEX® Multiplex Assays				
	Qualified Assays	Screening Assays	SMC® Assays	ELISAs	
Species	Human	•	•	•	
	Mouse	•		•	
	Rat	•		•	
	Non-Human Primate	•		•	
	Canine	•		•	
	Feline	•		•	
	Bovine	•		•	
	Chicken	•			
	Equine	•		•	
	Ovine	•		•	
	Porcine	•		•	
Multi-Species	•		•		
Analytes	Human	>580	115	>40	>1,000
	Mouse	>180		3	>300
	Rat	>90		3	>190
	Non-Human Primate	>60		1	>70
	Canine	>30		1	>30
	Feline	>15			>20
	Bovine	>15			>20
	Chicken	>10			
	Equine	>20			>20
	Ovine	>10			>5
	Porcine	>10			>30
Multi-Species	>5		1	>5	
Research Areas	Immunology/Inflammation	•	•	•	•
	Immune Response	•	•	•	•
	Virology	•		•	•
	Metabolism/Endocrinology	•	•	•	•
	Cardiovascular Disease	•	•	•	•
	Bone	•	•		•
	Cancer	•	•	•	•
	Neuroscience	•	•	•	•
	Toxicity	•	•		•
Cell Signaling	•			•	
Kit Format	Configurable (Select Your Own Analytes)*	•	•	-	-
	Premixed (Fixed Panel)*	•	•	-	-
	Bulk Premixed (Space Saver)*	•	•	-	-
	Custom Premix*	•	•	-	-
	Lot Matched at Kit Level			•	•**
Qualified Sample Types (see specific kits for more details)	Serum/Plasma	•		•	•
	Cell Culture Supernatants	•	Screening assays are sample agnostic	•	•
	Cell/Tissue Lysates	•		•	
	Cerebrospinal Fluid	•		•	
	Urine	•		•	
Custom Kits and Services	—			•	•

New Immunoassay Products

New Kits

Description	Species	Cat. No.
MILLIPLEX® Panels		
Exosome Characterization Panel	Human	HEXSM-170K
PLEXpedition Screening Panel	Human	HPLX1-115SP
PLEXpedition Screening Premixed 80-Plex Kit	Human	HPLX1-115SP-PX80
PLEXpedition Screening Premixed 115-Plex Kit	Human	HPLX1-115SP-PX
SMC® Kits		
IFN λ 1 High Sensitivity Immunoassay Kit	Human	03-0213-00
pTau 217 High Sensitivity Immunoassay Kit	Human	03-0210-00
pTau 231 High Sensitivity Immunoassay Kit	Human	03-0211-00

Streamline Biomarker Discovery

Get **Compelling PlexAbility** with the **MILLIPLEX® PLEXpedition Screening Panel**

Use this fit-for-purpose assay to simultaneously screen up to 115 analytes including cytokines, chemokines, growth factors, matrix metalloproteinases, and biomarkers of bone health, metabolism, and cardiovascular disease while saving time, money, and sample without compromising specificity.



Propel your research forward at SigmaAldrich.com/plexpedition



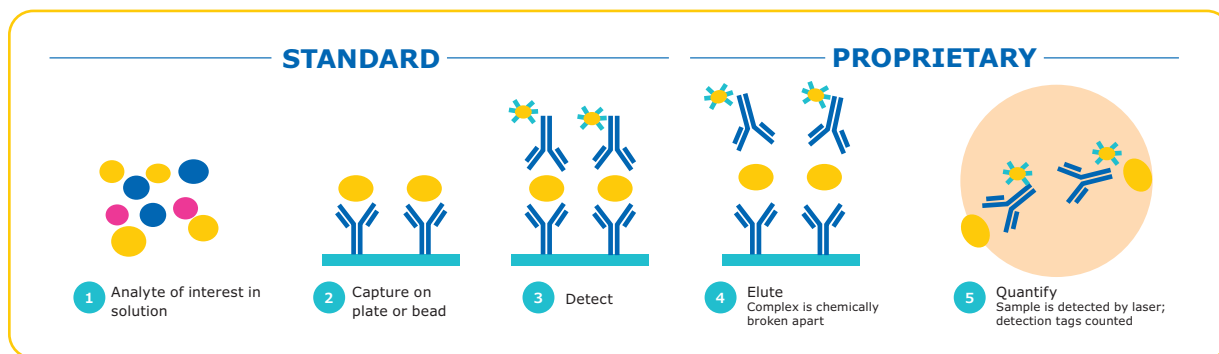
Coming Soon

Description	Species
MILLIPLEX® Panels	
Humanized Mouse Panel	Human, Mouse
Cytokine/Chemokine/Growth Factor Expanded Panel	Mouse
Cell Health Panel	Human
Rat/Mouse TSH Singleplex	Rat, Mouse
SMC® Kits	
IL-22 Binding Protein	Human
CTLA-4	Human

SMC[®] Technology

Reduced background + increased signal

SMC[®] technology provides maximum immunoassay performance while following a workflow similar to traditional ELISA technology, as shown below. By combining a unique assay elution step and robust digital counting, SMC[®] technology achieves improved signal-to-noise ratios over traditional immunoassay technologies. The SMC[®] technology thus provides enhanced quantification at both low and high levels of expression on one complete system.



Steps 2-3

Antibodies translate each biomarker into a signal

Step 4

Fluorescent dye-labeled detection antibodies dissociate from the immunocomplex

Step 5

On the SMCxPRO[®] instrument, signal is collected from free-floating fluorochromes using a rotating laser, camera, and counting individual molecules by an Avalanche Photodiode

Digital counting improves sensitivity and dynamic range

The SMCxPRO[®] instrument captures the sum of all digital events counted above the background threshold. The algorithm of the SMCxPRO[®] instrument computes digital events across a spectrum of time series for a single standard. The digital counting of molecules thus improves the assay sensitivity and extends the assay dynamic range beyond what can be achieved with traditional methods.

What Is SMC[®] Technology?

Satisfy your curiosity by visiting SigmaAldrich.com/smc-learn



Empower Your Biomarker Research

Ultrasensitive Detection with the SMCxPRO® Immunoassay System



- Ultrasensitive detection down to femtogram/mL
- Lightweight (22.7 kg/50 lbs), fluidics-free benchtop instrument
- Results in hours (average assay time of ~4.5 hours and read time ~45 min)
- More than 40 SMC® assays available from a growing menu
- Bead-based and plate-based assays available
- Custom assay services and sample testing options
- Cat. No. **95-0100-00**

Assay Performance and Instrument Specifications

Dynamic Range	> 4 logs
Precision	< 10% CV (response measurements from 30 fM calibrator, n=20)
Limit of Detection (LOD)	<1 fM
Slope	> 1.2 response/fM (determined from calibrator set: 0-300 fM of 150 kD antibody labeled with fluorophore)
Background	< 3 response/fM (determined from calibrator set: 0-300 fM of 150 kD antibody labeled with fluorophore)
Instrument Footprint	406.4 mm H x 355.6 mm W x 444.5 mm D (16"H x 14"W x 17.5"D)
Read Format	96-well custom plate optimized for SMC® technology
Regulatory Compliance	21 CFR part II and LIMS compatible
Automation Compatible	Yes

Three Levels of Onsite Service Support for SMCxPRO® Platform

- **Total Service:** Unlimited visits including labor, travel, expenses, and all parts for any service for one year
- **Advanced Service:** Labor, travel, and expenses for one preventative maintenance and one floating visit for one year
- **Essential Service:** Labor for one preventative maintenance visit for one year

SMC® Immunoassay Kits

Product Description	Cat. No.	LLOQ (pg/mL) ¹	Species ²	Sample Type ³
Immunology/Inflammation				
IFN-α2	03-0186-00	0.06	H	P,S
IFN-β1	03-0191-00	0.15	H	P,S
IFN-γ	03-0181-00	0.03	H	P,S
IFNλ1 NEW	03-0213-00	0.26	H	P,S
IL-1α2	03-0167-00	0.12	H	P,S
IL-1β	03-0160-00	0.20	H	P,S
IL-2	03-0195-00	0.09	H	P,S
IL-4	03-0161-00	0.04	H	P,S
IL-5	03-0168-00	0.04	H	P,S
IL-6	03-0155-00	0.08	H	P,S
IL-10	03-0176-00	0.10	H	P,S
IL-12p70	03-0182-00	0.10	H	P,S
IL-13	03-0156-00	0.04	H	P,S

SMC[®] Immunoassay Kits (continued)

Product Description	Cat. No.	LLOQ (pg/mL) ¹	Species ²	Sample Type ³
Immunology/Inflammation (continued)				
IL-17A/F Heterodimer	03-0177-00	2.34	H	P,S
IL-17A	03-0159-00	0.07	H	P,S
IL-17F	03-0164-00	0.20	H	P,S
IL-18	03-0190-00	0.09	H	P,S
IL-22	03-0162-00	0.10	H	P,S
IL-23	03-0157-00	0.10	H	P,S
MCP-1	03-0187-00	0.15	H	P,S
TNF α	03-0163-00	0.20	H	P,S
VEGF-A	03-0180-00	0.20	H	P,S
Neuroscience				
Phospho- α -Synuclein(Ser129)	03-0188-00	0.10	H	P,S,C
Total- α -Synuclein	03-0196-00	1.95	H	P,S,C
Amyloid beta 1-40	03-0145-00	5.86	H,M,R	P,C
Amyloid beta 1-42	03-0146-00	0.98	H,M,R	P,C
BDNF	03-0171-00	0.04	H	P,S,C
GFAP	03-0203-00	0.23	H	P,S,C
NF-L	03-0202-00	0.87	H	P,S,C
NPTX2	03-0199-00	0.58	H	P,S,C
SNAP-25	03-0206-00	0.26	H	P,S,C
TDP-43	03-0205-00	5.21	H	P,S,C
Phospho-Tau(Thr181)	03-0184-00	0.94	H	P,S,C
Phospho-Tau 217 NEW	03-0210-00	1.95	H	P,S,C
Phospho-Tau 231 NEW	03-0211-00	1.95	H	P,S,C
Total Tau	03-0185-00	4.69	H	P,S,C
UCHL1	03-0183-00	2.60	H	P,S,C
Cancer				
PD-1	03-0207-00	3.47	H	P,S
PD-L1	03-0208-00	0.78	H	P,S
Cardiovascular				
cTnI	03-0154-00	0.69	H,Cy,R,C,GP	P,S
Metabolism/Endocrinology				
Glucagon	03-0153-00	0.78	H,M,R	P
Immunogenicity				
IgE ⁴	03-0201-00	31.00	H	P,S
IgM ⁴	03-0204-00	206.00	H	P,S
Virology				
SARS-CoV-2 RBD IgG ⁵	03-0193-00	NA ⁵	H	P,S
SARS-CoV-2 S1 IgA ⁵	03-0197-00	NA ⁵	H	P,S

¹ LLOQ: Lowest point on standard curve with CV < 20% and accuracy within 20% of expected values. ² Optimized for first species type listed. Other listed species have been tested, but not optimized for peak performance. Key: H=Human; M=Mouse; R=Rat; GP=Guinea Pig; Cy=Cynomolgus Monkey; C=Canine. ³ Optimized for use in sample type(s) listed. Key: P=Plasma; S=Serum; L=Lysate; U=Urine; C=Cerebrospinal Fluid (CSF). ⁴ Plate-based assay. ⁵ Qualitative assay.

Read More About Ultrasensitive Technology

Explore all the ways researchers are using SMC[®] ultrasensitive assays at SigmaAldrich.com/smc-learn



Multiplexing Options That Fit Your Purpose

Introducing Screening and Qualified MILLIPLEX® Assays

Compelling PlexAbility with MILLIPLEX® Screening Assays

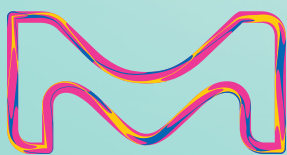
- Save sample, time, and money by profiling up to 115 analytes simultaneously without sacrificing specificity
- Excludes Serum Matrix to create sample agnostic panel for greater flexibility
- Ideal for detecting differences between experimental groups
- Human assay available
- Uses same critical raw materials as Qualified assays

Screen to identify analytes of interest and move to Qualified for further analysis



Genuine PlexAbility with MILLIPLEX® Qualified Assays

- Lot-to-lot reproducibility with rigorous QC testing
- Includes key reagents like Quality Controls and Serum Matrix for sample normalization
- Ideal for long-term or cross-site studies
- Broadest selection of analytes across research areas and species
- Configurable, premixed, and bulk kit options to fit your exact research needs



MILLIPLEX[®] Analyte Index

Analyte	Page No.	Analyte	Page No.	Analyte	Page No.
4-6					
4-1BBL/TNFSF9	17,20	BAD (Ser112)	24	C1q (autoantibody)	15
4E-BP1 (total)	25	BAFF/Blys	14,15,17	Complement C1q	15
4E-BP1 (Thr37/46)	25	BAFF/Blys (autoantibody)	15	Complement C2	15
5'-NT/CD73	17,18,20,22	BAX (total)	24	Complement C3	15,18
6Ckine/CCL21/Exodus-2	14,19,23	BCA-1/CXCL13	13,14,19,20,23	Complement C3b	15
A		Bcl-2 (total)	24	Complement C4	15,18
α-1-Acid Glycoprotein (AGP)	16,20,21,22	Bcl-2 (Ser70)	24	Complement C4b	15
α-1-Antitrypsin (A1AT)	18	Bcl-xL (total)	24	Complement C5	15
α-1 Microglobulin	18	Bcl-xL/BAD (interaction)	24	Complement C5a	15
α-2 Macroglobulin (A2M)	16,18,20,21	BDNF	13,16,18,20,21	Complement C5b-9	15
α-Fetoprotein (AFP)	16,17	Betacellulin	20	Complement C9	15
α-MSH	18,21	BIM	24	Complement Factor B	15
α-Synuclein	18	Blk (Tyr389)	25	Complement Factor H	15,18
ACTH	13,16,17,19,20,21,23	BMP-9	17	Complement Factor I	15
Active Caspase 8 (total)	24	BNP	13,16	Connective Tissue Growth Factor	
Active Caspase 9 (total)	24	BRAF (Ser446)	25	(CTGF)	21
ADAMTS13	16	BRAK/CXCL14	15	Contactin-1	18
Adiponectin	16,20,21	BTLA	17,20	Corticosterone	21
Adipsin/Factor D	15,16,20	C		Cortisol	18,23
Agouti-Related Protein (AgRP)	16,19	c-Jun (Ser73)	24	CRAF (Ser338)	25
ALK-1 (soluble)	20	c-Kit (panTyr)	25	Creatine Kinase Muscle (CKM)	21
Akt/PKB (Ser473)	24,25,26	c-Kit/SCFR (soluble)	17	CREB (Ser133)	25,26
Akt/PKB (total)	24,25,26	c-Met/HGFR (panTyr)	25	CREB (total)	25,26
Akt1 (Ser473)	26	c-Myc (total)	25	CTACK/CCL27	14,16,20,23
Akt1 (total)	26	C-Peptide	13,16,19	CTAG1B/NY-ESO-1 (autoantibody)	17
Akt2 (Ser474)	26	C-Peptide 2	20,21	CTLA-4/CD152	17,20
Akt2 (total)	26	C-Reactive Protein (CRP)	16,18,20,22	CXCL6/GCP-2	13,14,15,16
Albumin	19,22,23	CA125	17	CXCL16	14,15,16,20
ALDH1A1	17	CA15-3	17	CYFRA21-1	17
Amphiregulin	20	CA19-9	17	Cystatin C	18,21,22,23
Amylin (active)	13,16,19,20,21	Calbindin	18	D	
Amylin (total)	16,22	Calreticulin (CALR)	17	D-dimer	16
Amyloid beta 1-40 (Aβ 1-40)	19,21	Carbonic Anhydrase 9 (CA9)	17	DKK1	13,17,21
Amyloid beta 1-42 (Aβ 1-42)	19,21	Cardiac Troponin I (cTnI)	13,16,20,21	DPPI4	17
Angiogenin (ANG)	18	Cardiac Troponin T (cTnT)	16,20,21	E	
Angiopoietin-2	17,20	Cathepsin D	17,18	E-Cadherin	17,20
Angiostatin/Kringle	17	Caveolin-1 (CAV-1)	21	EGF	13,14,17,18,20,21,22
Angiotensinogen (AGT)	18	CCL28	14,15	EGFR/HER1/ErbB1 (soluble)	15,17
ANGPTL3	16	CCNB1/Cyclin B1 (autoantibody)	17	EGFR2/Her2/ErbB2 (soluble)	17
ANGPTL4	16	CD3ε (panTyr)	26	EGFR3/Her3/ErbB3 (soluble)	17
ANGPTL6/AGF	16	CD14 (soluble)	17	eIF-4B (Ser422)	25
Apelin	16	CD25/IL-2Rα	15,17,19,20	eIF-4E (Ser209)	25
Apolipoprotein AI (Apo AI)	17,18	CD27	17,20	eIF-4G (Ser1108)	25
Apolipoprotein AII (Apo AII)	17	CD28	17	eIF2a (Ser51)	25
Apolipoprotein B (Apo B)	17	CD30/TNFRSF8 (soluble)	15,17,19	ENA-78/CXCL5	13,14,23
Apolipoprotein CII (Apo CII)	17	CD31/PECAM-1 (soluble)	16,17,20	Endocan-1 (ESM-1)	16,20
Apolipoprotein CIII (Apo CIII)	17,18	CD40	17,20	Endoglin	17,20
Apolipoprotein E (Apo E)	17,18	CD40L (soluble)	13,14,17,19,20	Endostatin	17
ApoE4	18	CD44	17	Endothelin-1	17,20
APRIL	14,17	CD63	17	ENO1 (autoantibody)	17
Arginase-1 (ARG1)	17,18,22	CD80/B7-1	17,20	Eotaxin/CCL11	13,14,19,21,22
Argonaute-2 (Ago2)	17	CD81	17	Eotaxin-2/CCL24/MPIF-2	13,14,23
ATF2 (Thr71)	24	CD86/B7-2	17	Eotaxin-3/CCL26	13,14,23
ATR (total)	24	CD137/4-1BB/TNFRSF9 (soluble)	14,17,19,20	EpCAM	17
AXL (soluble)	17	CD226/DNAM-1	17,20	Erythropoietin (EPO)	13,16,19,20,21
B		CD9	17	ErbB1/EGFR (panTyr)	25
β-2-Microglobulin	18,21,22,23	CEA	17	ErbB2/HER2 (panTyr)	25
β-Endorphin	18,21	CENP-A (autoantibody)	15	ErbB3/HER3 (panTyr)	25
β-2-Glycoprotein (autoantibody)	15	CENP-B (autoantibody)	15	ErbB4/HER4 (panTyr)	25
β-Tubulin (total)	26	Chk1 (Ser345)	24	Erk/MAPK 1/2 (Thr185/Tyr187)	24,25,26
B7-H2/ICOSL	17,20	Chk2 (Thr68)	24	Erk/MAPK 1/2 (total)	25,26
B7-H3/CD276	17,20	CK-MB	13,16	E-Selectin (soluble)	16,17,20,21
B7-H4/VTCN1	17	Clusterin	18,21,22,23	Estradiol	23
B7-H5/VISTA	17	CNTF	16,19		
B7-H6	17	Collagen IV	18		
BAD (total)	24	COMP (cartilage oligomeric matrix protein)	15		

MILLIPIX[®] Analyte Index (continued)

Analyte	Page No.	Analyte	Page No.	Analyte	Page No.
F					
FABP1.....	16,18	HCC-4/CCL16	15	IL-4 (autoantibody)	15
FABP3.....	13,16,18,21	HCGβ.....	17	IL-4R (soluble).....	15,19
FABP4.....	13,16	Hck (Tyr411).....	25	IL-5	13,14,19,21,22
FADD (Ser194).....	25	HE4	17	IL-6	13,14,16,17,19,20,21,22
Fas Ligand (sFasL) (soluble)	13,14,15,17,19,20	Hepsin	17	IL-6 (autoantibody)	15
Fas/TNFRSF6 (soluble)	13,14,17,19,22	HER2/ErbB2 (autoantibody)	17	IL-6R (soluble).....	15,19
Ferritin	17,18	HGF.....	13,16,17,20	IL-6Ra (soluble)	17
Fetuin A	16,18	HGFR/c-Met (soluble)	17	IL-7	13,14,19,22
FGF-1/FGF-acidic	17,18	HIF-1α (autoantibody).....	17	IL-8/CXCL8.....	13,14,15,16,17,19,22,23
FGF-2/FGF-basic	13,14,17,19,20,22	HMGB1	14,15	IL-8/CXCL8 (autoantibody).....	15
FGF-19.....	16	HSP27 (Ser78).....	24	IL-9.....	13,14,19
FGF-21.....	13,16,20,21	HSP60 (autoantibody)	17	IL-10.....	13,14,16,19,20,21,22
FGF-23	13,16,17,21	HSP70	15	IL-10 (autoantibody).....	15
FGFR1 (panTyr).....	25	Human Serum Albumin (HSA).....	18	IL-11.....	13,14,15,19
FGL1/epassocin	17	HVEM	17,20	IL-12.....	22
Fgr (Tyr412)	25	I			
Fibrinogen.....	16,22	I-309/CCL1.....	13,14,23	IL-12 (p40)	13,14,19,22
Fibroblast Activation Protein (FAP).....	17	ICAM-1 (soluble)	15,16,18,20,21	IL-12 (p40) (autoantibody).....	15
Flotillin-1 (FLOT-1).....	17	ICOS	17	IL-12 (p70)	13,14,19,21,22
Flt3 Ligand.....	13,14,22	IDO1	17	IL-13.....	13,14,19,21,22
Flt3 (panTyr)	25	IDO2	17	IL-14/α -Taxilin.....	15
Follistatin (FST).....	16,17,20	IFNα2	13,14,15,19	IL-15.....	13,14,16,19,20,21,22
Follistatin-like Protein 1 (FSTL1)	16,20,21	IFNα2 (autoantibody)	15	IL-15 (autoantibody).....	15
Fractalkine/CX3CL1.....	13,14,16,19,21,22	IFNβ.....	14,15	IL-16.....	14,19,22,23
FSH.....	16,19,20,21,23	IFNβ (autoantibody)	15	IL-17A/CTLA8	13,14,19,20,21,22
Fyn (Tyr420).....	25	IFNβ1	19	IL-17A/CTLA8 (autoantibody).....	15
G					
Galectin-1	17,20	IFNγ.....	13,14,15,19,20,21,22	IL-17A/F	19
Galectin-1 (GAL1) (autoantibody).....	17	IFNγ (autoantibody)	15	IL-17E/IL-25	14,19
Galectin-3	17,20	IFNγ Receptor 1 (IFNGR1).....	15	IL-17F	13,14,15,19
Galectin-3 (GAL3) (autoantibody).....	17	IFNε.....	15	IL-17F (autoantibody)	15
GAPDH (total).....	17,26	IFNω.....	14,15	IL-18.....	13,14,15,16,19,21,22
G-CSF.....	13,14,15,17,19,20,21,22	IFNω (autoantibody).....	15	IL-18 (autoantibody).....	15
G-CSF (autoantibody).....	15	IgA.....	16,20	IL-18BPα	15
GDF-11	16	IgE.....	16,20	IL-19.....	15
GDF15	16,17	IGF-1	16	IL-20	14,19,23
GDNF.....	18	IGF-2.....	16	IL-21	13,14,19,22,23
GH	16,19,20,21,23	IGF1R (total)	24	IL-22	13,14,19
Ghrelin (active).....	13,16,19,20,21,23	IGF1R (panTyr)	25	IL-22 (autoantibody).....	15
GIP (total).....	13,16,19,20,21,23	IGF1R (Tyr1135/1136)	24	IL-23	13,14,19,23
GITR	17,20	IGFBP1	16	IL-24	14,15
GITRL.....	17	IGFBP2	16	IL-27	14,19
Glial Fibrillary Acidic Protein (GFAP)	18	IGFBP3	16	IL-28A/IFNλ2.....	14,15,19,23
GLP-1 (active).....	16,19,20,21,23	IGFBP4	16	IL-28B/IFNλ3.....	15,19
GLP-1 (total)	13,16,20,21	IGFBP5	16	IL-29/IFNλ1	14,15
Glucagon	13,16,19,20,21,23	IGFBP6	16	IL-31	14,19
GM-CSF	13,14,15,19,21,22	IGFBP7	16	IL-32α.....	15
GnRH.....	16,20	IgG1.....	16,20	IL-33/NF-HEV (mature)	13,14,19,23
GOT1.....	22	IgG2.....	16	IL-34	14,15
GP130 (soluble)	15,19	IgG2a.....	20	IL-35	14,15
Granulysin	17	IgG2b.....	20	IL-36β/IL-1F8.....	15
Granzyme A	13,14,19	IgG3.....	16,20	IL-36Ra/IL-1F5.....	22
Granzyme B	13,14,15,17,19,20	IgG4.....	16	IL-37/IL-1F7.....	15
GROα/CXCL1	13,14,19,20,21,22	IgM	16,20	IL-38/IL-1F10.....	15
GSK3α (total)	24	IκBα (Ser32).....	25	Insulin	13,16,17,19,20,21,23
GSK3α (Ser21).....	24	IKKα/β (Ser177/181).....	25	IP-10/CXCL10	13,14,18,19,21,22
GSK3β (total)	24	IL-1α.....	13,14,15,19,21,22	IR (total).....	24
GSK3β (Ser9)	24	IL-1α (autoantibody)	15	IR (Tyr162/1163)	24
GSTα	18,22	IL-1β.....	13,14,16,17,19,20,21,22	Irisin	16,20,21
H					
H2AX (Ser139)	24	IL-1RI.....	15,19	IRS1 (Ser636)	24
Haptoglobin.....	16,20,21,22	IL-1RII (soluble).....	15,19	IRS1 (total).....	24
HB-EGF.....	13,17	IL-1Ra.....	13,14,19,22	I-TAC/CXCL11	13,14,15,19
HCC-1/CCL14.....	15	IL-2	13,14,19,21,22	J	
		IL-2 (autoantibody)	15	Jag1	16,20
		IL-2Ra (soluble)	15,17,19,20	JNK/SAPK1 (Thr183/Tyr185)	24,25,26
		IL-3	13,14,19	JNK/SAPK1 (total).....	25,26
		IL-3 (autoantibody)	15	Jo-1 (autoantibody)	15
		IL-4	13,14,19,21,22		

MILLIPLEX[®] Analyte Index (continued)

Analyte	Page No.	Analyte	Page No.	Analyte	Page No.
K		mTOR (Ser2448)	24,26	Periostin	17
Kallikrein-6	17,18	mTOR (total)	24,26	Progranulin (pGRN)	17
KC-like Protein	22	Mucin-1 (MUC1) (autoantibody)	17	PL-12 (Alanyl-tRNA Synthetase)	
KC/GRO/CINC-1/CXCL1	19,20,21,22	Myeloperoxidase (MPO)	16,17,18	(autoantibody)	15
KIM-1	18,21,22,23	Myeloperoxidase (MPO) (autoantibody)	15	Placental Growth Factor 2	20
Ku (autoantibody)	15	Myoglobin	16	Placental Growth Factor (PGF)	13,16,17
L		Myosin Light Chain 3 (MYL3)	21	Platelet Factor 4 (PF4)/CXCL4	16
Lactotransferrin (LTF)	15	Myostatin/GDF8	13,16,20,21	PF4 (autoantibody)	15
LAG-3	17,20	N		PM/Scl 100 (autoantibody)	15
LAT (panTyr)	26	NAP-2/CXCL7	15	Progesterone	23
Lck (panTyr)	26	NCAM (soluble)	18	Prolactin	17,20,21,23
Lck (Tyr394)	25	NCAML1/L1CAM/CD171	17	ProMMP-9	19,20
Leptin	13,16,17,19,20,21,23	Nectin-2	17	Properdin	15
Leucine-rich alpha-2-glycoprotein 1	17	Nectin-4	17	Proteinase 3 (autoantibody)	15
(LRG1)	17	Neurogranin (NRGN)	18	PSA (free)	17
Leukemia Inhibitory Factor (LIF)	13,14,16,19,20,21,23	Neuron-specific Enolase (NSE)	17,18	PSA (total)	17
LH	16,19,20,21,23	Neuropilin-1 (soluble)	17	P-Selectin (soluble)	16,20
LIGHT	16,20	Neurotensin	18,21	PTEN (total)	24
LIX/CXCL5	19,21	Neutrophil Elastase-2 (ELA2)	15	PTEN (Ser380)	24
L-Selectin (soluble)	16	NFκB (total)	25	PTH	17,18,21
Lymphotactin/XCL1	14,15	NFκB (Ser536)	25	PVR/CD155	17
Lyn (Tyr397)	25	NGAL/Lipocalin-2	15,16,18,21,22,23	PYY (total)	13,16,19,20,21,22
M		NGF	13,16	R	
Mannose-Binding Lectin (MBL)	15	Notch1	20	RAGE (soluble)	15,18,19
MCAM/MUC18/sCD146	17	NOXA/Mcl-1 (interaction)	24	RANKL	17
Mcl-1/BIM (interaction)	24	NT-proBNP	13,16	RANTES/CCL5	13,14,18,19,21,22
Mcl-1 (total)	24	O		Ras (total)	25
MCP-1/CCL2	13,14,16,19,20,21,22,23	Oncostatin-M (OSM)	16,20	RasG12D (total)	25
MCP-2/CCL8	13,14,23	Osteoactivin	18	RasG12V (total)	25
MCP-3/CCL7	13,14	Osteocalcin (OC)	13,17	RBP4	18,23
MCP-4/CCL13	13,14,23	Osteocrin (OSTN)/Musclin	16,20,21	Renin	18,21
MCP-5/CCL12	19	Osteonectin/SPARC	13,16,17,20,21	Resistin	15,16,20
M-CSF	13,14,15,19,22	Osteopontin (OPN)	13,17,18,21,22,23	Ribosomal P (autoantibody)	15
M-CSFR (panTyr)	25	Osteopontin (OPN) (autoantibody)	15	RNP (autoantibody)	15
MDC/CCL22	13,14,19	Osteoprotegerin (OPG)	13,17,21	RNP/Sm (autoantibody)	15
MDH1	18	OX40/CD134	17	RPS6 (Ser235/Ser236)	24
MDM2 (total)	24	Oxytocin	18,21	RPS6 (total)	24
MEK1 (Ser222)	24,25	P		S	
Melanoma Inhibitory Activity Protein		P16-INK4a (autoantibody)	17	S100B	18
(MIA)	17	p21 (total)	24	SARS-CoV-2 N	16
Melatonin	18,21	p38/SAPK2A/B (Thr180/Tyr182)	24,25,26	SARS-CoV-2 RBD	16
Mesothelin	17	p38/SAPK2A/B (total)	25,26	SARS-CoV-2 Spike S1	16
Mi-2 (autoantibody)	15	p53 (autoantibody)	17	SARS-CoV-2 Spike S2	16
MICA	17	p53 (Ser15)	24	SCF	13,14,17,22,23
MICB	17	p53 (Ser46)	24	Scl-70 (autoantibody)	15
Midkine	17	p70S6 Kinase (total)	24,25	Sclerostin (SOST)	13,17,21
MIF	15,17	p70S6 Kinase (Thr389/412)	24,25	SDF-1/CXCL12	13,14,20,22,23
MIG/CXCL9	13,14,15,19	PAI-1 (total)	15,16,18,20,21	SDH	18,22
MIP-1α/CCL3	13,14,15,19,20,21,22	Pancreatic Polypeptide (PP)	13,16,19,20,21,23	Secretin	16,20,21
MIP-1β/CCL4	13,14,15,19,22	PARK5/Uchl1	18	Serum Amyloid A (SAA)	16
MIP-1δ/MIP-5/CCL15	13,14,23	PARK7/DJ1	18	Serum Amyloid P (SAP)	16,18,20
MIP-2/CXCL2	19,21	PCNA (autoantibody)	15	Sex Hormone Binding Globulin (SHBG)	
MIP-3α/CCL20	13,14,15,19,22	PD-1	17,20	Siglec-7	17
MIP-3β/CCL19	13,14,15,19	PDGF-AA	13,14,18	Siglec-9	17
MIP-4/PARC/CCL18	15,18	PDGF-AB/BB	14,17,18	Sm (autoantibody)	15
MMP-1	13,15	PDGF-BB	13,22	SMAD2 (Ser465/467)	26
MMP-2	13,15,19,20	PDGFRα (panTyr)	25	SMAD3 (Ser423/425)	26
MMP-3	13,15,19,20	PDGFRβ (panTyr)	25	SMAD4 (total)	26
MMP-7	13,15	PD-L1	17,20	SOX2 (autoantibody)	17
MMP-8	15,19,20	PD-L2	17,20	Src (Tyr419)	25
MMP-9	13,15	PEDF	18	SSA/Ro52 (autoantibody)	15
MMP-10	13,15	Pentraxin-3 (PTX3)	16	SSA/Ro60 (autoantibody)	15
MMP-12	13,15,19,20	Perforin	13,14,17,19	SSB/La (autoantibody)	15
MMP-13	15			STAT1 (Tyr701)	24,25
MPIF/CCL23	14,15			STAT2 (Tyr690)	25
MSK1 (Ser212)	24			STAT3 (total)	25,26

MILLIPLEX® Analyte Index (continued)

Analyte	Page No.	Analyte	Page No.	Analyte	Page No.
STAT3 (Ser727)	25	Thrombospondin-2 (TSP-2)	17	TSLP	13,14,23
STAT3 (Tyr705)	25,26	TIE1 (panTyr)	25	TWEAK	17
STAT5A/B (total)	25	TIE2 (panTyr)	25		
STAT5A/B (Tyr694/699)	25	Tie-2 (soluble)	17	U	
STAT6 (Tyr641)	25	TIM-3	17,20	ucMGP	17
Substance P	18,21	TIMP-1	15,18,21,22	uPAR (soluble)/CD87	17
Superoxide Dismutase 1 (soluble)		TIMP-2	15	Uromodulin	18
(sSOD1)	18	TIMP-3	15	Uteroglobin	15
Superoxide Dismutase 2 (soluble)		TIMP-4	15		
(sSOD2)	18	Tissue Factor (TF)	16	V	
Survivin/BIRC5 (autoantibody)	17	TLR-2	17,20	VCAM-1 (soluble)	15,16,18
Syntenin-1 (Syn-1)	17	TNFR1 (total)	25	VEGF	21,22
Syk (panTyr)	26	TNFa	13,14,15,16,17,19,20,21,22	VEGF-A	13,14,17,19,20,21,22
		TNFa (autoantibody)	15	VEGF-C	13,17,20
T		TNFβ/Lymphotoxin-α (LTA)	13,14,19	VEGF-D	13,17,20
T3	21,23	TNF RI (soluble) (sTNFR1)	15,19	VEGFR1/Flt-1 (panTyr)	25
T4	21,23	TNF RII (soluble) (sTNFR2)	15,19	VEGFR1/Flt-1 (soluble)	15,17,19
TARC/CCL17	13,14,19,23	TPO	13,14,23	VEGFR2/KDR/Flk-1 (panTyr)	25
Tau (Total)	18	TRAIL/TNFSF10	13,14,17,23	VEGFR2/KDR/Flk-1 (soluble)	15,17,19
Tau (Thr181)	18	Transglutaminase 2 (TGM2)	17,18	VEGFR3/Flt-4 (panTyr)	25
TFF-3	18,23	TRAP5	17	VEGFR3/Flt-4 (soluble)	15,17,19
TGFα	13,14,17,19	TREM2	18		
TGFβ1	23	Troponin I (TnI)	13,16,20,21	Y	
TGFβ2	23	Troponin T (TnT)	16,20,21	Yes (Tyr421)	25
TGFβ3	23	TSC2 (total)	24	YKL40/CHI3L1	15,17
TGFβRII (total)	26	TSC2 (Ser939)	24		
Thrombomodulin	16,20	TSG101	17	Z	
Thrombospondin-1 (TSP-1)	15	TSH	16,19,20,21,23	ZAP-70 (panTyr)	26

Analytes in blue font: available in Screening and Qualified assays. **Analytes in black font:** available in Qualified assays only. Human pp. 13-18; Non-Human Primate p. 19; Mouse pp. 19-21; Rat pp. 21-22; Other/Multi-Species pp. 22-23; Cell Signaling kits pp. 24-26

Multiplex Your Research
 Explore all the ways researchers are using MILLIPLEX® multiplex assays at SigmaAldrich.com/milliplex-learn



What's In A Typical MILLIPLEX® Kit?

MILLIPLEX[®] PLEXpedition Screening Assays

HUMAN

Multiple Research Areas

Human Screening Assay

(Cat. No. HPLX1-115SP)

80 (Cat. No. HPLX1-115SP-PX80) ♦

115 (Cat. No. HPLX1-115SP-PX)

xMAP[®] INTELLIFLEX[®] or FLEXMAP 3D[®] Instrument

Luminex[®] 200™ Instrument

MAGPIX[®] Instrument

EGF ♦	IL-2 ♦	MCP-1 ♦	ACTH ♦	M-CSF ♦	Amylin (Active)	MCP-2
FGF-2 ♦	IL-4 ♦	MIG ♦	BDNF ♦	MCP-3 ♦	BCA-1	MCP-4
Fractalkine ♦	IL-5 ♦	MIP-1 α ♦	C-Peptide ♦	MDC ♦	BNP	MIP-1 β
G-CSF ♦	IL-6 ♦	MIP-1 β ♦	Eotaxin ♦	MIP-3 α ♦	CK-MB	MIP-3 β
Ghrelin (Active) ♦	IL-7 ♦	OPN ♦	FABP4 ♦	MMP-1 ♦	GCP-2	MMP-3
GIP ♦	IL-8 ♦	PDGF-AA ♦	FLT3 Ligand ♦	MMP-2 ♦	DKK1	MMP-10
Glucagon ♦	IL-10 ♦	PDGF-AB/BB ♦	GLP-1 Total ♦	MMP-7 ♦	ENA-78	MMP-12
GM-CSF ♦	IL-12 (p40) ♦	Perforin ♦	Granzyme A ♦	MMP-9 ♦	Eotaxin-2	Myostatin
Granzyme B ♦	IL-12 (p70) ♦	RANTES ♦	I-TAC ♦	OPG ♦	Eotaxin-3	NGF
GRO α ♦	IL-13 ♦	sCD40L ♦	IL-3 ♦	PIGF ♦	Erythropoietin (EPO)	NTproBNP
HGF ♦	IL-15 ♦	SCF ♦	IL-9 ♦	PP ♦	FABP3	Osteocalcin
IFN α 2 ♦	IL-17A ♦	sFAS ♦	IL-17F ♦	PYY ♦	FGF-21	Osteonectin
IFN γ ♦	IL-18 ♦	sFASL ♦	IL-21 ♦	TARC ♦	FGF-23	SDF-1
IL-1 α ♦	IL-22 ♦	TGF α ♦	IL-33 ♦	TNF β ♦	HB-EGF	SOST
IL-1 β ♦	IL-23 ♦	TNF α ♦	Insulin ♦	Troponin I ♦	I-309	TPO
IL-1Ra ♦	IP-10 ♦	TRAIL ♦			IL-11	TSLP
	Leptin ♦	VEGF-A ♦			LIF	VEGF-C
						VEGF-D

Configure Your Multiplex Kits with Ease

Check out our enhanced kit configurator where you can select your analytes for MILLIPLEX[®] qualified assays as well as our new MILLIPLEX[®] PLEXpedition screening kits. Design your kit at SigmaAldrich.com/milliplex-order



Human Interferon

(Cat. No. HIFN-130K)

9 (Cat. No. HIFN-130K-PMX9)

IFNα2	IFNε
IFNβ	IFNω
IFNγ	IL-28A/IFNλ2
IFNγ Receptor 1 (IFNGR1)	IL-28B/IFNλ3 IL-29/IFNλ1

Human Soluble Cytokine Receptor

(Cat. No. HSCRMAG-32K)

14 (Cat. No. HSCRMAG32KPX14)

14 (Bulk Cat. No. HSCRMAG32PMX14BK)

sCD30	sIL-6R
sEGFR/sHER1/ErbB1	sRAGE
sGP130	sTNF RI
sIL-1RI	sTNF RII
sIL-1RII	sVEGFR1/sFlt-1
sIL-2Ra	sVEGFR2/sKDR/sFlk-1
sIL-4R	sVEGFR3/sFlt-4

Human Cytokine/Chemokine Panel III

(Cat. No. HCYP3MAG-63K)

HCC-1/CCL14▲	M-CSF
IL-11	MIG/CXCL9
IL-29/IFNλ1	MIP-3α/CCL20
I-TAC/CXCL11	MIP-3β/CCL19
CXCL6/GCP-2	NAP-2/CXCL7▲
Lymphotactin/XCL1	

Human Cytokine/Chemokine Panel IV

9 (Cat. No. HCYP4MAG-64K)

20 (Cat. No. HCY4MG-64K-PX20)

20 (Bulk Cat. No. HCP4MG64KPX20BK)

BAFF/Blys	IL-28B/IFNλ3
BRAK/CXCL14	IL-32α
CCL28	IL-34
CXCL16	IL-35
HCC-4/CCL16	IL-36β/IL-1F8
HMGB1●	IL-37/IL-1F7
IFNβ	IL-38/IL-1F10
IL-14/α-Taxilin	MIP-4/PARC/CCL18
IL-19	MPIF/CCL23
IL-24	YKL40/CHI3L1

Human IL-18 Singleplex

(Cat. No. HIL18MAG-66K)

IL-18

Human Complement Expanded Panel 1

9 (Cat. No. HCMPEX1-19K)

Adipsin/Factor D	C9
C2	Factor I
C4b	Mannose-Binding Lectin (MBL)
C5	Properdin
C5a	

Human Complement Panel 2

9 (Cat. No. HCMPEX2MAG-19K)

C1q	C4
C3	Factor B
C3b	Factor H

Human Complement C5b-9 Singleplex

(Cat. No. HC5B9-140K)

C5b-9

Human MMP Panel 1

(Cat. No. HMMPM1MAG-55K)

MMP-3	MMP-13
MMP-12	

Human MMP Panel 2

(Cat. No. HMMPM2MAG-55K)

MMP-1	MMP-9
MMP-2	MMP-10
MMP-7	

Human TIMP Panel 1 (Serum/Plasma samples)

(Cat. No. HTMP1MAG-54K)

TIMP-1	TIMP-2
--------	--------

Human TIMP Panel 2 (Cell culture samples)

(Cat. No. HTMP2MAG-54K)

TIMP-1	TIMP-3
TIMP-2	TIMP-4

Human Fibrosis Panel 1

(Cat. No. HFIB1-100K)

COMP	Uteroglobulin
IL-18BPα	

Immune Response**Human Autoimmune Autoantibody****

(Cat. No. HAIAB-10K)

QUALITATIVE KIT

β2-Glycoprotein	PM/Scl 100
C1q	Proteinase 3
CENP-A	Ribosomal P
CENP-B	RNP
Jo-1	RNP/Sm
Ku	Scl-70
Mi-2	Sm
Myeloperoxidase (MPO)	SSA/Ro52
PCNA	SSA/Ro60
PL-12 (Alanyl-tRNA Synthetase)	SSB/La

Human Cytokine Autoantibody Expanded IgG, IgA, and IgM**

IgG (Cat. No. HCYTABG-17K)

IgA (Cat. No. HCYTABA-17K)

IgM (Cat. No. HCYTABM-17K)

QUALITATIVE KIT

BAFF/Blys	IL-8/CXCL8
G-CSF	IL-10
GM-CSF	IL-12 (p40)
IFNα2	IL-15
IFNβ	IL-17A/CTLA8
IFNγ	IL-17F
IFNω	IL-18
IL-1α	IL-22
IL-2	Osteopontin
IL-3	PF4
IL-4	TNFA
IL-6	

Human Sepsis Panel 1

(Cat. No. HSP1MAG-63K)

sFAS/TNFRSF6	MIF
sFasL	PAI-1 (total)
sICAM-1	sVCAM-1

Human Sepsis Panel 2

(Cat. No. HSP2MAG-63K)

Granzyme B	MIP-1α/CCL3
HSP70	MIP-1β/CCL4
IL-1α	MMP-8
IL-8/CXCL8	

Human Sepsis Panel 3

(Cat. No. HSP3MAG-63K)

Lactotransferrin (LTF)	Resistin
Neutrophil Elastase-2 (ELA2)	Thrombospondin-1 (TSP-1)
NGAL/Lipocalin-2	

MILLIPLEX® Autoantibody ProfilingDiscover the benefits of multiplexing autoantibodies at SigmaAldrich.com/milliplex-autoab

Human Immunoglobulin Isotyping

☐ (Cat. No. HGAMMAG-301K)

IgA	IgG3
IgG1	IgG4
IgG2	IgM

Human IgE – Singleplex

(Cat. No. HGAMMAG-303E)

IgE

Virology

SARS-CoV-2 Antigen Panel 1 IgA**

(Cat. No. HC19SERA1-85K)

QUALITATIVE KIT

SARS-CoV-2 N	SARS-CoV-2 Spike S1
SARS-CoV-2 RBD	SARS-CoV-2 Spike S2

SARS-CoV-2 Antigen Panel 1 IgG**

(Cat. No. HC19SERG1-85K)

QUALITATIVE KIT

SARS-CoV-2 N	SARS-CoV-2 Spike S1
SARS-CoV-2 RBD	SARS-CoV-2 Spike S2

SARS-CoV-2 Antigen Panel 1 IgM**

(Cat. No. HC19SERM1-85K)

QUALITATIVE KIT

SARS-CoV-2 N	SARS-CoV-2 Spike S1
SARS-CoV-2 RBD	SARS-CoV-2 Spike S2

For Research Use Only. Not For Use In Diagnostic Procedures.

Metabolism/Endocrinology

Human Adipokine Panel 1 (Serum/Plasma samples)

(Cat. No. HADK1MAG-61K)

Adiponectin	PAI-1 (total)
Adipsin/Factor D	Resistin
NGAL/Lipocalin-2	

Human Adipokine Panel 2 (Serum/Plasma samples)

(Cat. No. HADK2MAG-61K)

IL-1β	Leptin
IL-6	MCP-1/CCL2
IL-8/CXCL8	NGF
Insulin	TNFα

Human Adipocyte (Cell culture samples)

(Cat. No. HADCYMAG-61K)

Adiponectin	MCP-1/CCL2
HGF	NGF
IL-1β	PAI-1 (total)
IL-6	Resistin
IL-8/CXCL8	TNFα
Leptin	

Human Metabolic Hormone V3

(Cat. No. HMH3-34K)

Amylin (active) †	Insulin
Amylin (total) †	Leptin
C-Peptide	MCP-1/CCL2
Ghrelin (active) †	Pancreatic Polypeptide (PP)
GIP (total)	PYY (total)
GLP-1 (active) †	Secretin
GLP-1 (total) †	TNFα
Glucagon †	
IL-6	

Human Myokine

(Cat. No. HMYOMAG-56K)

Apelin	IL-15
BDNF	Irisin
Erythropoietin (EPO)	LIF
FABP3	Myostatin/GDF8
FGF-21	Oncostatin-M (OSM)
Fractalkine/CX3CL1	Osteocrin (OSTN)/Musclin
FSTL1	Osteonectin/SPARC
IL-6	

Human Aging Panel 1

(Cat. No. HAGE1MAG-20K)

CTACK/CCL27	IL-6
FGF-21	IL-10*
GDF-11	IL-18
GDF15	Jag1
GnRH	Leptin

Human Liver Protein

(Cat. No. HLPMMAG-57K)

α-Fetoprotein (AFP)	FGF-19
ANGPTL3	FGF-21
ANGPTL4	FGF-23
ANGPTL6	HGF
FABP1	

Human IGF Binding Protein †

(Cat. No. HIGFBMAG-53K)

IGFBP1	IGFBP5
IGFBP2	IGFBP6
IGFBP3*	IGFBP7
IGFBP4	

Human IGF ■

(Cat. No. HIGFMAG-52K)

IGF-1	IGF-2
-------	-------

Human Pituitary Panel 1

(Cat. No. HPTP1MAG-66K)

ACTH	FSH
Agouti-Related Protein (AgRP)	GH
CNTF	LH
	TSH

Cardiovascular

Human CVD Panel 1

(Cat. No. HCVD1MAG-67K)

BNP	LIGHT
CK-MB	NT proBNP
CXCL6/GCP-2	Oncostatin-M (OSM)
CXCL16	Placental Growth Factor (PIGF)
Endocan-1 (ESM-1)	Troponin I (TnI)
FABP3	
FABP4	

Human CVD Panel 2

(Cat. No. HCVD2MAG-67K)

ADAMTS13	Myoglobin
D-dimer ⁵	NGAL/Lipocalin-2
GDF15	sP-Selectin
sICAM-1	Serum Amyloid A
Myeloperoxidase (MPO)	sVCAM-1

Human CVD Panel 3 (Acute Phase)

(Cat. No. HCVD3MAG-67K)

α-1-Acid Glycoprotein (AGP)	Haptoglobin
α-2-Macroglobulin	sL-Selectin
Adipsin/Factor D	Platelet Factor 4 (PF4)/CXCL4
CRP	Serum Amyloid P (SAP)
Fetuin A	
Fibrinogen [⊖]	

Human CVD Panel 4

(Cat. No. HCVD4MAG-67K)

sCD31/sPECAM-1	Thrombomodulin
sE-Selectin	Tissue Factor (TF)
Follistatin (FST)	Troponin T (TnT)
Pentraxin-3 (PTX3)	

Legend key for MILLIPLEX® kits

- † Analytes which cannot be plexed together:
 - Active and total
 - Free and total
- ◆ Available in Cat. No. listed
- ▼ Premix panel only
- Bulk indicates Space Saver Packaging
- ▲ These analytes cannot be plexed with other analytes in this panel in serum/plasma

- ▶ Requires a protease inhibitor during sample collection
- Requires sample extraction
- ** No standard/QC; antibody levels are reported as MFIs (Median Fluorescence Intensities)
- Serum/Plasma only
- ★ Tissue Culture samples only

- ^ Competitive assay format
- ☐ Available for custom premix
- Analyte requires a different sample dilution from others in panel
- ⊖ Analyte cannot be measured in serum
- # Requires sample acidification
- ⁵ Analyte cannot be measured in plasma
- ^u Urine only

Human CVD Panel 6

(Cat. No. HCVD6MAG-67K)

sCD14	MCAM/MUC18
DPP4	Progranulin (pGRN)
Endostatin	ucMGP
LRG1	

Human Apolipoprotein

(Cat. No. APOMAG-62K)

Apo AI	Apo CII
Apo AII	Apo CIII
Apo B	Apo E

Bone**Human Bone**

(Cat. No. HBNMAG-51K)

ACTH	Osteocalcin (OC)
DKK1	Osteopontin (OPN)
FGF-23	Osteoprotegerin (OPG)
IL-1 β	PTH
IL-6	Sclerostin (SOST)
Insulin	TNFA
Leptin	

Human RANKL – Singleplex

(Cat. No. HRNKLMAG-51K-01)

RANKL

Cancer**Human Immuno-Oncology Checkpoint Protein Panel 1**

(Cat. No. HCKP1-11K)

17 (Cat. No. HCKP1-11K-PX17)

17 (Bulk Cat. No. HCKP1-11K-PXBK17)

BTLA	HVEM
CD27	ICOS
CD28	LAG-3
CD40	PD-1
CD80/B7-1	PD-L1
CD86/B7-2	PD-L2
CTLA-4/CD152	TIM-3
GITR	TLR-2
GITRL	

Human Immuno-Oncology Checkpoint Protein Panel 2

(Cat. No. HCKP2-11K)

4-1BBL/TNFSF9	FGL1/Hepassocin
5'-NT/CD73	Galectin-1
APRIL	Galectin-3
Arginase-1	Granulysin
B7-H2/ICOSL	Granzyme B
B7-H3/CD276	IDO1
B7-H4/VTCN1	MICA
B7-H5/VISTA	MICB
B7-H6	Nectin-2
BAFF/BLyS	Nectin-4
CD25/IL-2Ra	OX40/CD134
CD30/TNFRSF8	Perforin
CD40L	PVR/CD155
CD137/4-1BB	Siglec-7
CD226/DNAM-1	Siglec-9
E-Cadherin	

Human Cancer Autoantibody**

(Cat. No. HCABMAG-13K)

QUALITATIVE KIT

CCNB1/Cyclin B1	IGF2BP2/IMP2
CTAG1B/NY-ESO-1	IGF2BP3/IMP3
ENO1	Mucin-1 (MUC1)
Galectin-1 (GAL1)	P16-INK4a
Galectin-3 (GAL3)	p53
HER2/ErbB2	SOX2
HIF-1 α	Survivin/BIRC5
HSP60	

Human Exosome Characterization**NEW**

(Cat. No. HEXSM-170K)

9 (Cat. No. HEXSM-170K-PMX)

9 (Bulk Cat. No. HEXSM-170K-BKPMX)

Argonaute-2 (Ago2)*	Flotillin-1 (FLOT-1)
Calreticulin (CALR)	GAPDH
CD9	Syntenin-1 (Syn-1)
CD63	TSG101
CD81	

*The Ago2 bead is static and will always be included in the kit format.

Human Circulating Cancer Biomarker Panel 1

(Cat. No. HCCBP1MAG-58K)

α -Fetoprotein (AFP)	IL-8/CXCL8
CA125	Leptin
CA15-3	MIF
CA19-9	Osteopontin (OPN)
CEA	Prolactin
CYFRA21-1	PSA (free) [†]
sFAS/TNFRSF6	PSA (total) [†]
sFasL	SCF
FGF-2/FGF-basic	TGF α
HCG β	TNF α
HE4	TRAIL/TNFSF10
HGF	VEGF-A
IL-6	

Human Circulating Cancer Biomarker Panel 3

(Cat. No. HCCBP3MAG-58K)

Cathepsin D	Melanoma Inhibitory Activity (MIA)
Ferritin	Myeloperoxidase (MPO)
Fibroblast Activation Protein (FAP)	Sex Hormone Binding Globulin (SHBG)
Galectin-3	
IGFBP3	

Human Circulating Cancer Biomarker Panel 4

(Cat. No. HCCB4MAG-58K)

ALDH1A1	Kallikrein-6
Carbonic Anhydrase 9 (CA9)	Mesothelin
CD44	Midkine
EpCAM	NCAM1/L1CAM/CD171
Hepsin	Transglutaminase 2 (TGM2)

Human Cancer/Metastasis Biomarker Panel 1

(Cat. No. HCMBMAG-22K)

DKK1	Osteoprotegerin (OPG)
GDF15	Periostin
Neuron-specific Enolase (NSE)	TRAP5
Osteonectin/SPARC	TWEAK
	YKL40/CHI3L1

Human Angiogenesis/Growth Factor Panel 1

(Cat. No. HAGP1MAG-12K)

Angiopoietin-2	HB-EGF
BMP-9	HGF
EGF	IL-8/CXCL8
Endoglin	Leptin
Endothelin-1	Placental Growth Factor (PIGF)
FGF-1/FGF-acidic	VEGF-A
FGF-2/FGF-basic	VEGF-C
Follistatin (FST)	VEGF-D
G-CSF	

Human Angiogenesis Panel 2

(Cat. No. HANG2MAG-12K)

Angiostatin/Kringle	sIL-6Ra
sAXL	sNeuropilin-1 (sNRP-1)
sCD31/sPECAM-1	Osteopontin (OPN)
sc-Kit/sStem Cell Factor Receptor (SCFR)	PDGF-AB/BB
sE-Selectin	Thrombospondin-2 (TSP-2)
sEGFR/sHER1/sErbB1	sTIE-2
sHER2/sEGFR2/sErbB2	suPAR
sHER3/sEGFR3/sErbB3	sVEGFR1/sFlt-1
sHGFR/sc-Met	sVEGFR2/sKDR/sFlk-1
	sVEGFR3/sFlt-4

MILLIPLEX® Cancer KitsSee how our kits are advancing cancer and immuno-oncology research at SigmaAldrich.com/milliplex-cancer

Neuroscience

Human Amyloid Beta and Tau (CSF samples)

(Cat. No. HNABTMAG-68K)

Amyloid beta 1-40	pTau (Thr181)
Amyloid beta 1-42	Tau (total)

Human Neuroscience Panel 1 (CSF samples)

(Cat. No. HNS1MAG-95K)

α-Synuclein	PARK5/UCHL1
Glial Fibrillary Acidic Protein (GFAP)	PARK7/DJ1
Neuron-specific Enolase (NSE)	Transglutaminase 2 (TGM2)

Human Neuroscience Panel 2

(Cat. No. HNS2MAG-95K)

Angiogenin (ANG) ^o	Ferritin
ApoE4 [†]	Neurogranin (NRGN)
FABP3	TREM2

Human Neurodegenerative Disease Panel 1

(Cat. No. HNDG1MAG-36K)

α-2-Macroglobulin	Complement Factor C3
Apo AI	Complement Factor H (CFH)
Apo CIII	
Apo E	

Human Neurodegenerative Disease Panel 2

(Cat. No. HNDG2MAG-36K)

α-1-Antitrypsin (A1AT)	MIP-4/PARC/CCL18
C4	PEDF
CRP	Serum Amyloid P (SAP)

Human Neurodegenerative Disease Panel 3

(Cat. No. HNDG3MAG-36K)

BDNF	PAI-1 (total)
Cathepsin D	PDGF-AA
sICAM-1	PDGF-AB/BB
Myeloperoxidase (MPO)	RANTES/CCL5
sNCAM	sVCAM-1

Human Neurodegenerative Disease Panel 4 (CSF samples)

(Cat. No. HNDG4MAG-36K)

Amyloid beta 1-40	sRAGE
Amyloid beta 1-42	S100B
GDNF	

Human Neurological Disorders Panel 3

(Cat. No. HND3MAG-39K)

Angiotensinogen (AGT)	Osteopontin (OPN)
Contactin-1	Soluble Superoxide Dismutase 1 (sSOD1)
Fetuin A ^o	Soluble Superoxide Dismutase 2 (sSOD2)
Kallikrein-6	

Human Neuropeptide ■ ^

(Cat. No. HNP MAG-35K)

α-MSH	Oxytocin
β-Endorphin	Substance P
Neurotensin	

Human Circadian Stress ■ ^

(Cat. No. HNC SMAG-35K)

Cortisol	Melatonin
----------	-----------

Toxicity

Human Kidney Injury Panel 1 (Urine samples)

(Cat. No. HKI1MAG-99K)

Calbindin	KIM-1
Collagen IV	Renin
GSTα	TFF-3
IP-10/CXCL10	TIMP-1

Human Kidney Injury Panel 2 (Urine samples)

(Cat. No. HKI2MAG-99K)

α-1-Microglobulin	EGF
Albumin	NGAL/Lipocalin-2
Clusterin	Osteopontin (OPN)
Cystatin C	

Human Kidney Injury Panel 4 (Serum/Plasma samples)

(Cat. No. HKI4MAG-99K)

EGF	Osteopontin (OPN)
FABP1	PTH
IP-10/CXCL10	Renin
KIM-1	

Human Kidney Injury Panel 5 (Serum/Plasma samples)

(Cat. No. HKI5MAG-99K)

α-1-Microglobulin	Osteoactivin
Collagen IV	TIMP-1
NGAL/Lipocalin-2	Uromodulin

Human Kidney Injury Panel 6 (Serum/Plasma samples)

(Cat. No. HKI6MAG-99K)

β-2-Microglobulin	Cystatin C
Clusterin	RBP4

Human Liver Injury

(Cat. No. HLINJ MAG-75K)

5'NT/CD73	MDH1
ARG1	SDH
GSTα	

Explore Biomarkers for Alzheimer's Disease Research

Learn how to combine multiplex and high sensitivity assay analysis for AD biomarker studies at [SigmaAldrich.com/immunoassays-AD](https://www.sigmaaldrich.com/immunoassays-AD)



Legend key for MILLIPLEX® kits

- † Analytes which cannot be plexed together:
 - Active and total
 - Free and total
- ◆ Available in Cat. No. listed
- ▼ Premix panel only
- Bulk indicates Space Saver Packaging
- ▲ These analytes cannot be plexed with other analytes in this panel in serum/plasma

- ◆ Requires a protease inhibitor during sample collection
- Requires sample extraction
- ** No standard/QC; antibody levels are reported as MFIs (Median Fluorescence Intensities)
- Serum/Plasma only
- ★ Tissue Culture samples only

- ^ Competitive assay format
- ⊗ Available for custom premix
- Analyte requires a different sample dilution from others in panel
- ⊙ Analyte cannot be measured in serum
- # Requires sample acidification
- ˆ Analyte cannot be measured in plasma
- u Urine only

PRIMATE

Immunology

Non-Human Primate Cytokine/Chemokine /Growth Factor Panel A

- ☐ (Cat. No. PRCYTA-40K)
- 38 (Cat. No. PRCYTA-40K-PX38)♦
- 38 (Cat. No. PRCYTA-40K-BK38)♦
- 48 (Cat. No. PRCYTA-40K-PX48)
- 48 (Cat. No. PRCYTA-40K-BK48)

BCA-1/CXCL13	IL-15♦
sCD137/4-1BB/TNFRSF9♦	IL-16
sCD40L♦	IL-17A/CTLA8♦
Eotaxin/CCL11	IL-17E/IL-25
sFASL♦	IL-18♦
FGF-2/FGF-basic	IL-21♦
Fractalkine/CX3CL1	IL-22♦
G-CSF♦	IL-23♦
GM-CSF♦	IL-28A/IFNλ2
Granzyme A♦	IL-31
Granzyme B♦	IL-33/NF-HEV (mature)♦
IFNα2♦	IP-10/CXCL10♦
IFNγ♦	I-TAC/CXCL11♦
IL-1α	MCP-1/CCL2♦
IL-1β♦	MIG/CXCL9♦
IL-1RA♦	MIP-1α/CCL3♦
IL-2♦	MIP-1β/CCL4♦
IL-4♦	MIP-3α/CCL20♦
IL-5♦	Perforin♦
IL-6♦	RANTES/CCL5♦▲*
IL-7♦	TGFα♦
IL-8/CXCL8♦	TNFα♦
IL-10♦	TNFβ/LTA
IL-12 (p70)♦	VEGF-A♦

Metabolism/Endocrinology

Non-Human Primate Metabolic Hormone

(Cat. No. NHPMHMAG-45K)

Amylin (active)▶	Insulin
C-Peptide	Leptin
Ghrelin (active)▶	MCP-1/CCL2
GIP (total)	Pancreatic Polypeptide (PP)
GLP-1 (active)▶	PYY (total)
Glucagon▶	
IL-6	

Non-Human Primate Pituitary Panel 1

(Cat. No. NHPPT1MG-46K)

ACTH	FSH
Agouti-Related Protein (AgRP)	GH
CNTF	LH
	TSH

MOUSE

Immunology

Mouse Cytokine/Chemokine Panel 1

- ☐ (Cat. No. MCYTOMAG-70K)
- 25 (Cat. No. MCYTOMAG-70K-PMX)♦
- 25 (Bulk Cat. No. MCYTOMAG70PMX25BK)♦
- 32 (Cat. No. MCYTOMAG-70K-PX32)
- 32 (Bulk Cat. No. MCYTOMAG70PMX32BK)

Eotaxin/CCL11	IL-13♦
G-CSF♦	IL-15♦
GM-CSF♦	IL-17A/CTLA8♦
IFNγ♦	IP-10/CXCL10♦
IL-1α♦	KC/GRO/CINC-1/CXCL1♦
IL-1β♦	LIF
IL-2♦	LIX
IL-3	MCP-1/CCL2♦
IL-4♦	M-CSF
IL-5♦	MIG/CXCL9
IL-6♦	MIP-1α/CCL3♦
IL-7♦	MIP-1β/CCL4♦
IL-9♦	MIP-2/CXCL2♦
IL-10♦	RANTES/CCL5♦
IL-12 (p40)♦	TNFα♦
IL-12 (p70)♦	VEGF-A

Mouse Cytokine/Chemokine Panel 2

- ☐ (Cat. No. MECY2MAG-73K)
- 14 (Cat. No. MECY2MAG-73KPX)
- 14 (Bulk Cat. No. MECY2MAG73KPBK)

Erythropoietin (EPO)	IL-17A/F
Exodus-2/CCL21/6Ckine	IL-20
Fractalkine/CX3CL1	MCP-5/CCL12
IFNβ1	MDC/CCL22
IFNγ	MIP-3α/CCL20
IL-11	MIP-3β/CCL19
IL-16	TARC/CCL17

Mouse High Sensitivity T Cell

- ☐ (Cat. No. MHSTCMAG-70K)
- 18 (Cat. No. MHSTCMAG-70KPMX)
- 18 (Bulk Cat. No. MHSTCMAG-70KPBK)

GM-CSF	IL-10
IFNγ	IL-12 (p70)
IL-1α	IL-13
IL-1β	IL-17A/CTLA8
IL-2	KC/GRO/CINC-1/CXCL1
IL-4	LIX
IL-5	MCP-1/CCL2
IL-6	MIP-2/CXCL2
IL-7	TNFα

Mouse Th17

- ☐ (Cat. No. MTH17MAG-47K)
- 25 (Cat. No. MT17MAG47K-PX25)
- 25 (Bulk Cat. No. MT17MAG47PMX25BK)

sCD40L	IL-17E/IL-25
GM-CSF	IL-17F
IFNγ	IL-21
IL-1β	IL-22
IL-2	IL-23
IL-4	IL-27
IL-5	IL-28B/IFNλ3
IL-6	IL-31
IL-10	IL-33/NF-HEV (mature)
IL-12 (p70)	MIP-3α/CCL20
IL-13	TNFα
IL-15	TNFβ/Lymphotoxin-α (LTA)
IL-17A/CTLA8	

Mouse CD8+ T Cell

- ☐ (Cat. No. MCD8MAG-48K)
- 15 (Cat. No. MCD8MAG48K-PX15)
- 15 (Bulk Cat. No. MCD8MAG48KPX15BK)

sCD137/4-1BB/TNFRSF9	IL-4
sFas/TNFRSF6	IL-5
sFasL	IL-6
GM-CSF	IL-10
Granzyme B	IL-13
IFNγ	MIP-1β/CCL4
IL-2	RANTES/CCL5
	TNFα

Mouse Soluble Cytokine Receptor

- ☐ (Cat. No. MSCRMAG-42K)

sCD30	sRAGE
sGP130	sTNF RI
sIL-1RI	sTNF RII
sIL-1RII	sVEGFR1/sFlt-1
sIL-2Ra	sVEGFR2/sKDR/sFlk-1
sIL-4R	sVEGFR3/sFlt-4
sIL-6R	

Mouse MMP Panel 1 (Serum/Plasma samples)

(Cat. No. MMMP1MAG-79K)

MMP-2	MMP-8
MMP-3	

Mouse MMP Panel 2 (Serum/Plasma samples)

(Cat. No. MMMP2MAG-79K)

proMMP-9	MMP-12
----------	--------

Non-Human Primate Cytokine Analysis

Save time and sample with the largest bead-based non-human primate multiplex assay on the market.

Read more at SigmaAldrich.com/milliplex-primate



Mouse MMP Panel 3
(Cell culture samples)

(Cat. No. MMMP3MAG-79K)

MMP-2	proMMP-9
MMP-3	MMP-12
MMP-8	

Immune Response**Mouse Immunoglobulin Isotyping**

☐ (Cat. No. MGAMMAG-300K)

IgA	IgG2b
IgG1	IgG3
IgG2a	IgM

Mouse IgE – Singleplex
(Cat. No. MGAMMAG-300E)

IgE

**Metabolism/
Endocrinology****Mouse Adipokine**
(Serum/Plasma samples)

(Cat. No. MADKMAG-71K)

IL-6	PAI-1 (total)
Insulin	Resistin
Leptin	TNFα
MCP-1/CCL2	

Mouse Adipocyte
(Cell culture samples)

(Cat. No. MADCYMAG-72K)

Adiponectin	PAI-1 (total)
IL-6	Resistin
Leptin	TNFα
MCP-1/CCL2	

**Mouse Adiponectin –
Singleplex**
(Serum/Plasma samples)

(Cat. No. MADPNMAG-70K-01)

Adiponectin

**Mouse Metabolic Hormone
Expanded**

(Cat. No. MMHE-44K)

Amylin (active) †	Leptin
C-Peptide 2	MCP-1/CCL2
Ghrelin (active) †	Pancreatic Polypeptide (PP)
GIP (total)	PYY (total)
GLP-1 (active) ††	Resistin
GLP-1 (total) ††	Secretin
Glucagon †	TNFα
IL-6	
Insulin	

Mouse Myokine

(Cat. No. MMYOMAG-74K)

BDNF	Irisin
Erythropoietin (EPO) ★	LIF
FGF-21	Myostatin/GDF8
Follistatin-like Protein 1 (FSTL1)	Oncostatin-M (OSM)
IL-6	Osteocrin (OSTN)/Musclin
IL-15	Osteonectin/SPARC

Mouse Aging Panel 1

(Cat. No. MAGE1MAG-25K)

CTACK/CCL27	Jag1
FGF-21	Leptin
GnRH	Notch1
IL-6	TNFα

Mouse Pituitary

(Cat. No. MPTMAG-49K)

ACTH	LH
BDNF	Prolactin
FSH	TSH
GH	

Cardiovascular**Mouse CVD Panel 1**

(Cat. No. MCVD1MAG-77K)

sCD31/sPECAM-1	ProMMP-9
sE-Selectin	sP-Selectin
sICAM-1	Thrombomodulin
PAI-1 (total)	

Mouse CVD Panel 2

(Cat. No. MCVD2MAG-77K)

sCD40L	Oncostatin M (OSM)
CXCL16	Placental Growth Factor 2
Endocan-1 (ESM-1)	Troponin I (TnI)
Follistatin (FST)	Troponin T (TnT)
LIGHT	

Mouse Acute Phase Panel 2

(Cat. No. MAP2MAG-76K)

α-1-Acid Glycoprotein (AGP)	CRP
α-2-Macroglobulin	Haptoglobin
Adipsin/Factor D	Serum Amyloid P (SAP)

Cancer**Mouse Angiogenesis / Growth Factor Panel 1**

(Cat. No. MAGPMAG-24K)

sALK-1	IL-6
Amphiregulin	IL-17A/CTLA8
Angiopoietin-2 ▲	KC/GRO/CINC-1/CXCL1
Betacellulin ▲	Leptin
sCD31/sPECAM-1 ▲	MCP-1/CCL2
EGF	MIP-1α/CCL3
Endoglin	Placental Growth Factor 2
Endothelin-1	Prolactin
sFasL	SDF-1/CXCL12
FGF-2/FGF-basic	TNFα
Follistatin (FST)	VEGF-A
G-CSF	VEGF-C
HGF	VEGF-D
IL-1β	

**Mouse Immuno-Oncology
Checkpoint Protein Panel 1**

☐ (Cat. No. MCKP1-110K)

⊗ (Cat. No. MCKP1-110K-PX28)

⊗ (Bulk Cat No. MCKP1-110K-PBK28)

4-1BBL/TNFSF9	Galectin-1
5'-NT/CD73	Galectin-3
B7-H2/ICOSL	GITR
B7-H3/CD276	Granzyme B
BCA-1/CXCL-13	HVEM
BTLA	IFNγ
CD137/4-1BB	IL-10
CD226/DNAM-1	LAG-3
CD25/IL-2Rα	PD-1
CD27	PD-L1
CD40	PD-L2
CD80/B7-1	TIM-3
CTLA-4/CD152	TLR-2
E-Cadherin	TNFα

Legend key for MILLIPLEX® kits

- † Analytes which cannot be plexed together:
 - Active and total
 - Free and total
- ♦ Available in Cat. No. listed
- ▼ Premix panel only
- Bulk indicates Space Saver Packaging
- ▲ These analytes cannot be plexed with other analytes in this panel in serum/plasma

- ‡ Requires a protease inhibitor during sample collection
- Requires sample extraction
- ** No standard/QC; antibody levels are reported as MFIs (Median Fluorescence Intensities)
- Serum/Plasma only
- ★ Tissue Culture samples only

- ^ Competitive assay format
- ☐ Available for custom premix
- Analyte requires a different sample dilution from others in panel
- ⊗ Analyte cannot be measured in serum
- # Requires sample acidification
- § Analyte cannot be measured in plasma
- ⊔ Urine only

Neuroscience

Mouse Amyloid Beta

(Cat. No. MABMAG-83K)

Amyloid beta 1-40	Amyloid beta 1-42
-------------------	-------------------

Mouse Neuropeptide ■ ^

(Cat. No. RMNPMAG-83K)

α-MSH	Oxytocin
β-Endorphin	Substance P
Neurotensin	

Toxicity

Mouse Kidney Injury Panel 1

(Cat. No. MKI1MAG-94K)

β-2-Microglobulin ^u	Renin
IP-10/CXCL10	TIMP-1
KIM-1	VEGF-A ^u

Mouse Kidney Injury Panel 2

(Cat. No. MKI2MAG-94K)

Clusterin	NGAL/Lipocalin-2
Cystatin C	Osteopontin (OPN)
EGF	

RAT

Immunology

Rat Cytokine/Chemokine

☑ (Cat. No. RECYTMAG-65K)

27 (Cat. No. RECYMAG65K27PMX)

27 (Bulk Cat. No. RECYMAG65PMX27BK)

EGF	IL-10
Eotaxin/CCL11	IL-12 (p70)
Fractalkine/CX3CL1	IL-13
G-CSF	IL-17A/CTLA8
GM-CSF	IL-18
KC/GRO/CINC-1/ CXCL1	IP-10/CXCL10
IFNγ	Leptin
IL-1α	LIX
IL-1β	MCP-1/CCL2
IL-2	MIP-1α/CCL3
IL-4	MIP-2/CXCL2
IL-5	RANTES/CCL5
IL-6	TNFα
	VEGF

Metabolism/ Endocrinology

Rat Adipokine

(Serum/Plasma samples)

(Cat. No. RADPKMAG-80K)

IL-1β	MCP-1/CCL2
IL-6	PAI-1 (total)
Insulin	TNFα
Leptin	

Rat Adipocyte

(Cell culture samples)

(Cat. No. RADPCMAG-82K)

Adiponectin	MCP-1/CCL2
IL-1β	PAI-1 (total)
IL-6	TNFα
Leptin	

Rat Metabolic Hormone Expanded

(Cat. No. RMHE-120K)

Amylin (active) [▶]	Insulin
C-Peptide 2	Leptin
Ghrelin (active) [▶]	MCP-1/CCL2
GIP (total)	Pancreatic Polypeptide (PP)
GLP-1 (active) [†] [▶]	PYY (total)
GLP-1 (total) [†] [▶]	Secretin
Glucagon [▶]	TNFα
IL-6	

Rat Myokine

(Cat. No. RMYOMAG-88K)

BDNF	IL-15
Erythropoietin (EPO)	Irisin
FGF-21	LIF
Follistatin-like Protein 1 (FSTL1)	Myostatin/GDF8
Fractalkine/CX3CL1	Osteocrin (OSTN)/ Musclin
IL-6	Osteonectin/SPARC

Rat Pituitary

(Cat. No. RPTMAG-86K)

ACTH	LH
BDNF	Prolactin
FSH	TSH
GH	

Rat Stress Hormone ■

(Cat. No. RSHMAG-69K)

ACTH	Melatonin [^]
Corticosterone [^]	

Rat Thyroid

(Cat. No. RTHYMAG-30K)

T3 [^]	TSH
T4 [^]	

Cardiovascular

Rat Cardiac Injury Panel 1

(Cat. No. RCI1MAG-87K)

Cardiac Troponin I (cTnI)	FABP3
Cardiac Troponin T (cTnT)	Follistatin-like Protein 1 (FSTL1)
Creatine Kinase Muscle (CKM)	Myosin Light Chain 3 (MYL3)
	TIMP-1

Rat Vascular Injury Panel 1 (Serum/Plasma samples)

(Cat. No. RV1MAG-26K)

Caveolin-1	IL-6
Connective Tissue Growth Factor (CTGF)	MCP-1/ CCL2
KC/GRO/CINC-1/ CXCL1	PAI-1 (total)
	TIMP-1
	TNFα
	VEGF

Rat Vascular Injury Panel 2 (Serum/Plasma samples)

(Cat. No. RV2MAG-26K)

Adiponectin	sICAM-1
sE-Selectin	

Rat Vascular Injury Panel 3 (Serum/Plasma samples)

(Cat. No. RV3MAG-26K)

α-1-Acid Glycoprotein (AGP)	Haptoglobin
α-2-Macroglobulin (A2M)	

Bone

Rat Bone Panel 1 (Serum/Plasma samples)

(Cat. No. RBN1MAG-31K)

ACTH	Leptin
DKK1	Osteoprotegerin (OPG)
FGF-23	PTH
Insulin	Sclerostin (SOST)

Neuroscience

Rat Neuropeptide ■ ^

(Cat. No. RMNPMAG-83K)

α-MSH	Oxytocin
β-Endorphin	Substance P
Neurotensin	

Quality in Every MILLIPLEX® Kit

We pride ourselves on our quality R&D, support, manufacturing, and QC.

Read more at: SigmaAldrich.com/milliplex-quality



Toxicity

Rat Kidney Toxicity Panel 1 (Urine samples)

(Cat. No. RKT1MAG-37K)

Clusterin	Osteopontin (OPN)
GSTα [^]	TIMP-1
IP-10/CXCL10	VEGF-A
KIM-1	

Rat Kidney Toxicity Panel 2 (Urine samples)

(Cat. No. RKT2MAG-37K)

α-1-Acid Glycoprotein (AGP)	Cystatin C
Albumin [^]	EGF
β-2-Microglobulin	NGAL/Lipocalin-2

Rat Liver Injury

(Cat. No. RLI1MAG-92K)

5'NT/CD73	GSTα
ARG1	SDH
GOT1	

COMPANION/ AGRICULTURAL

Immunology

Bovine Cytokine/Chemokine Panel 1

- ☉ (Cat. No. BCYT1-33K)
- 15 (Cat. No. BCYT1-33K-PX15)
- 15 (Bulk Cat. No. BCYT1-33K-PXBK15)

IFNγ	IL-36RA/IL-1F5
IL-1α	IP-10/CXCL10
IL-1β	MCP-1/CCL2
IL-4	MIP-1α/CCL3
IL-6	MIP-1β/CCL4
IL-8/CXCL8	TNFα
IL-10	VEGF-A
IL-17A/CTLA8	

Bovine Acute Phase Protein

(Cat. No. BAPP1-150K)

Haptoglobin	Fibrinogen ☉
-------------	--------------

Canine Cytokine/Chemokine

- ☉ (Cat. No. CCYTOMAG-90K)
- 15 (Cat. No. CCYTMG-90K-PX13)
- 15 (Bulk Cat. No. CCYTOMAG90KPX13BK)

GM-CSF	IL-15
IFNγ	IL-18
IL-2	IP-10/CXCL10
IL-6	KC-like
IL-7	MCP-1/CCL2
IL-8/CXCL8	TNFα
IL-10	

Chicken Cytokine/Chemokine

- ☉ (Cat. No. GCYT1-16K)
- 12 (Cat. No. GCYT1-16K-PX12)
- 12 (Cat. No. GCYT1-16K-PXBK12)

IFNα	IL-21
IFNγ	M-CSF
IL-2	MIP-1β/CCL4
IL-6	MIP-3α/CCL20
IL-10	RANTES/CCL5
IL-16	VEGF

Equine Cytokine/Chemokine

- ☉ (Cat. No. EQCYTMAG-93K)
- 23 (Cat. No. EQCYTMG-93KPX23)
- 23 (Cat. No. EQCTMG93KPX23BK)

Eotaxin/CCL11	IL-6
FGF-2/FGF-basic	IL-8/CXCL8
Fractalkine/CX3CL1	IL-10
G-CSF	IL-12 (p70)
GM-CSF	IL-13
GRO	IL-17A/CTLA8
IFNγ	IL-18
IL-1α	IP-10/CXCL10
IL-1β	MCP-1/CCL2
IL-2	RANTES/CCL5
IL-4	TNFα
IL-5	

Feline Cytokine/Chemokine ▼

- 19 (Cat. No. FCYTOMAG-20K-PMX)
- 19 (Bulk Cat. No. FCYTOMAG20KPMX19BK)
- NON-CONFIGURABLE KIT**

sFAS/TNFRSF6	IL-13
Flt3 Ligand	IL-18
GM-CSF	KC/GRO/CINC-1/ CXCL1
IFNγ	MCP-1/CCL2
IL-1β	PDGF-BB
IL-2	RANTES/CCL5
IL-4	SCF
IL-6	SDF-1/CXCL12
IL-8/CXCL8	TNFα
IL-12 (p40)	

Ovine Cytokine/Chemokine Panel 1

- ☉ (Cat. No. SCYT1-91K)
- 14 (Cat. No. SCYT1-91K-PX14)
- 14 (Bulk Cat. No. SCYT1-91K-PXBK14)

IFNγ	IL-17A/CTLA8
IL-1α	IL-36RA/IL-1F5
IL-1β	IP-10/CXCL10
IL-4	MIP-1α/CCL3
IL-6	MIP-1β/CCL4
IL-8/CXCL8	TNFα
IL-10	VEGF-A

Porcine Cytokine/Chemokine

- ☉ (Cat. No. PCYTOMAG-23K)
- 15 (Cat. No. PCYTOMG-23K-13PX)
- 15 (Bulk Cat. No. PCYTOMAG23PMX13BK)

GM-CSF	IL-6
IFNγ	IL-8/CXCL8
IL-1α	IL-10
IL-1β	IL-12
IL-1Ra	IL-18
IL-2	TNFα
IL-4	

Porcine Acute Phase Protein

(Cat. No. PAPP1-160K)

CRP	Haptoglobin
-----	-------------

MILLIPLEX® Veterinary Medicine and Animal Health Kits

Expand your possibilities in animal health research with our wide selection of biomarker kits.

Discover more at SigmaAldrich.com/vetmed



Legend key for MILLIPLEX® kits

- † Analytes which cannot be plexed together:
 - Active and total
 - Free and total
- ♦ Available in Cat. No. listed
- ▼ Premix panel only
- Bulk indicates Space Saver Packaging
- ▲ These analytes cannot be plexed with other analytes in this panel in serum/plasma

- ▶ Requires a protease inhibitor during sample collection
- Requires sample extraction
- ** No standard/QC; antibody levels are reported as MFIs (Median Fluorescence Intensities)
- Serum/Plasma only
- ★ Tissue Culture samples only

- ^ Competitive assay format
- ☉ Available for custom premix
- ° Analyte requires a different sample dilution from others in panel
- Analyte cannot be measured in serum
- # Requires sample acidification
- § Analyte cannot be measured in plasma
- u Urine only

Metabolism/ Endocrinology

Canine Gut Hormone

(Cat. No. CGTMAG-98K)

Amylin (total) ▶	Insulin
Ghrelin (active)▶	Leptin
GIP (total)	Pancreatic
GLP-1 (active) ▶	Polypeptide (PP)
Glucagon	PYY (total)

Canine Pituitary Expanded Panel

(Cat. No. CANPIT-96K)

ACTH	LH
FSH	Prolactin
GH	TSH

Toxicity

Canine Kidney Toxicity Expanded Panel 1 (Urine samples)

(Cat. No. CKT1MAG-97K)

Clusterin	MCP-1/CCL2
Cystatin C	NGAL/ Lipocalin-2
IL-8/CXCL8	Osteopontin (OPN)
KIM-1	

Canine Kidney Toxicity Panel 2 (Urine samples)

(Cat. No. CKT2MAG-97K)

Albumin	RBP4
β-2-Microglobulin	TFF-3

MULTI-SPECIES

Immunology

Multi-Species TGFβ – Singleplex

(Cat. No. TGFBMAG-64K-01)
(Bulk Cat. No. TGFBMAG-64K-01BK)
Species: C, E, F, H, M, NHP, Por, R, guinea pig, hamster, rabbit

TGFβ1

Multi-Species TGFβ – 3 Plex ▼#

(Cat. No. TGFBMAG-64K-03)
Species: H, M, NHP, R, guinea pig, hamster, mini pig; additionally, TGF-β1 and TGF-β2 can be detected in the serum of C, E, and rabbit

NON-CONFIGURABLE KIT

TGFβ1 TGFβ3
TGFβ2

Metabolism/ Endocrinology

Multi-Species Hormone ■ ^

(Cat. No. MSHMAG-21K)
Species: C, E, F, H, M, NHP, Por, R, guinea pig, hamster, rabbit

Cortisol T3
Estradiol T4
Progesterone

KITS TO BE PHASED OUT

Human Cytokine/Chemokine Panel II

☐ (Cat. No. HCYP2MAG-62K)
23 (Cat. No. HCP2MAG-62K-PX23)
23 (Bulk Cat. No. HCP2MAG62KPX23BK)

6Ckine/CCL21/ Exodus-2	IL-28A/IFNA2
BCA-1/CXCL13	IL-33/NF-HEV (mature)
CTACK/CCL27	LIF
ENA-78/CXCL5	MCP-2/CCL8
Eotaxin-2/CCL24/ MIPF-2	MCP-4/CCL13
Eotaxin-3/CCL26	MIP-1δ/MIP-5/CCL15
I-309/CCL1	SCF
IL-16	SDF-1/CXCL12
IL-20	TARC/CCL17
IL-21	TPO
IL-23	TRAIL/TNFSF10
	TSLP

MULTIPLE

MILLIPIX® METABOLISM / ENDOCRINOLOGY / TOXICITY / IMMUNOLOGY

FOR RESEARCH USE ONLY. NOT FOR USE IN DIAGNOSTIC PROCEDURES.

Cell Signaling MILLIPLEX® Assays

Akt/mTOR (Phosphoprotein) – 11 Plex

(Cat. No. 48-611MAG) AB2 ▼ **NON-CONFIGURABLE KIT**

Analyte	Total	Phosphorylated	
Akt/PKB	✓ (Ser473)	H, M, R	
GSK3α	✓ (Ser21)	H, M, R	
GSK3β	✓ (Ser9)	H, M, R	
IGF1R	✓ (Tyr1135/1136)	H, M	
IR	✓ (Tyr1162/1163)	H	
IRS1	✓ (Ser636)	H, M, R	
mTOR	✓ (Ser2448)	H, M, R	
p70S6 Kinase	✓ (Thr412)	H, M, R	
PTEN	✓ (Ser380)	H, M, R	
RPS6	✓ (Ser235/236)	H, M, R	
TSC2	✓ (Ser939)	H, M, R	

Akt/mTOR (Total) – 11 Plex

(Cat. No. 48-612MAG) AB2 ▼ **NON-CONFIGURABLE KIT**

Analyte	Total	Phosphorylated	
Akt/PKB	✓	H, M, R	
GSK3α	✓	H, M, R	
GSK3β	✓	H, M, R	
IGF1R	✓	H, M, R	
IR	✓	H, R	
IRS1	✓	H, M, R	
mTOR	✓	H, M, R	
p70S6 Kinase	✓	H, M, R	
PTEN	✓	H, M, R	
RPS6	✓	H, M, R	
TSC2	✓	H, M, R	

Early Apoptosis – 7 Plex

(Cat. No. 48-669MAG) AB2 ▼ **NON-CONFIGURABLE KIT**

Analyte	Total	Phosphorylated	
Akt/PKB	✓ (Ser473)	H, M, R	
BAD	✓ (Ser112)	H, M	
Bcl-2	✓ (Ser70)	H	
Active Caspase-8 (Asp384)	✓	H	
Active Caspase-9 (Asp315)	✓	H	
JNK/SAPK1	✓ (Thr183/Tyr185)	H, M, R	
p53	✓ (Ser46)	H	

Human Bcl-2 Family Apoptosis Panel 1 - 6 Plex

(Cat. No. 48-682MAG) AB1 ▼ **NON-CONFIGURABLE KIT**

Analyte	Total	Phosphorylated	
BAD	✓	✓ (Ser112)	H
BAX	✓		H
Bcl-xL/BAD (interaction)	✓		H
BIM	✓		H
Mcl-1/BIM (interaction)	✓		H

Human Bcl-2 Family Apoptosis Panel 2 - 4 Plex

(Cat. No. 48-683MAG) AB1 ▼ **NON-CONFIGURABLE KIT**

Analyte	Total	Phosphorylated	
Bcl-2	✓		H
Bcl-xL	✓		H
Mcl-1	✓		H
NOXA/Mcl-1 (interaction)	✓		H

Human DNA Damage/Genotoxicity – 7 Plex

(Cat. No. 48-621MAG) AB1 ▼ **NON-CONFIGURABLE KIT**

Analyte	Total	Phosphorylated	
ATR	✓		H
Chk1		✓ (Ser345)	H, M, R
Chk2		✓ (Thr68)	H
H2A.X		✓ (Ser139)	H, M, R
MDM2	✓		H, M, R
p21	✓		H
p53		✓ (Ser15)	H

MAPK/SAPK (Phosphoprotein) – 10 Plex

(Cat. No. 48-660MAG) AB2 ▼ **NON-CONFIGURABLE KIT**

Analyte	Total	Phosphorylated	
ATF2		✓ (Thr71)	H, M
c-Jun		✓ (Ser73)	H, M, R
Erk/MAPK 1/2		✓ (Thr185/Tyr187)	H, M, R
HSP27		✓ (Ser78)	H
JNK/SAPK1		✓ (Thr183/Tyr185)	H, M, R
MEK1		✓ (Ser222)	H, M, R
MSK1		✓ (Ser212)	H, M
p38/SAPK2A/B		✓ (Thr180/Tyr182)	H, M, R
p53		✓ (Ser15)	H
STAT1		✓ (Tyr701)	H, M

Learn More About Cancer and Metastasis Signaling Pathways

Read about all of the kits that can elucidate your signaling research at SigmaAldrich.com/milliplex-cancer-cs

- Can be plexed with other 2 Plexes
- * Cannot plex with other phospho Akt
- ▼ Premix panel only

AB1: Uses Assay Buffer 1
AB2: Uses Assay Buffer 2

H Human
M Mouse
R Rat

Human RTK (Phosphoprotein)

(Choose analytes that meet your needs)

(Cat. No. HPRTKMAG-01K) AB1

Analyte	Total	Phosphorylated
c-Kit		(pan Tyr) H
c-Met/HGFR		(pan Tyr) H
ErbB1/EGFR		(pan Tyr) H
ErbB2/HER2		(pan Tyr) H
ErbB3/HER3		(pan Tyr) H
ErbB4/HER4		(pan Tyr) H
FGFR1		(pan Tyr) H
Flt3		(pan Tyr) H
IGF1R		(pan Tyr) H
M-CSFR		(pan Tyr) H
PDGFR α		(pan Tyr) H, M, R
PDGFR β		(pan Tyr) H
TIE1		(pan Tyr) H
TIE2		(pan Tyr) H
VEGFR1/Flt-1		(pan Tyr) H
VEGFR2/KDR/Flk-1		(pan Tyr) H
VEGFR3/Flt-4		(pan Tyr) H, M, R

Multi-Pathway (Phosphoprotein) – 9 Plex(Cat. No. 48-680MAG) AB2 ▼ **NON-CONFIGURABLE KIT**

Analyte	Total	Phosphorylated
Akt/PKB	✓ (Ser473)	H, M, R
CREB	✓ (Ser133)	H, M, R
Erk/MAPK 1/2	✓ (Thr185/Tyr187)	H, M, R
JNK/SAPK1	✓ (Thr183/Tyr185)	H, M, R
NF κ B	✓ (Ser536)	H, M, R
p38/SAPK2A/B	✓ (Thr180/Tyr182)	H, M, R
p70S6 Kinase	✓ (Thr412)	H, M, R
STAT3	✓ (Ser727)	H, M, R
STAT5A/B	✓ (Tyr694/699)	H, M, R

Multi-Pathway (Total) – 9 Plex(Cat. No. 48-681MAG) AB2 ▼ **NON-CONFIGURABLE KIT**

Analyte	Total	Phosphorylated
Akt/PKB	✓	H, M, R
CREB	✓	H, M, R
Erk/MAPK 1/2	✓	H, M, R
JNK/SAPK1	✓	H, M, R
NF κ B	✓	H, M, R
p38/SAPK2A/B	✓	H, M, R
p70S6 Kinase	✓	H, M, R
STAT3	✓	H, M, R
STAT5A/B	✓	H, M, R

NF κ B – 6 Plex(Cat. No. 48-630MAG) AB1 ▼ **NON-CONFIGURABLE KIT**

Analyte	Total	Phosphorylated
c-Myc	✓	H
FADD		✓ (Ser194) H
I κ B α		✓ (Ser32) H
IKK α / β		✓ (Ser177/181) H
NF κ B		✓ (Ser536) H, M
TNFR1	✓	H

Protein Translation – 6 Plex(Cat. No. 48-655MAG) AB2 ▼ **NON-CONFIGURABLE KIT**

Analyte	Total	Phosphorylated
eIF2a		✓ (Ser51) H, M, R
eIF-4B		✓ (Ser422) H, M, R
eIF-4E		✓ (Ser209) H, M, R
eIF-4G		✓ (Ser1108) H, M, R
4E-BP1	✓	✓ (Thr37/46) H, M, R

Human Ras-Raf Oncoprotein – 6 Plex(Cat. No. 48-684MAG) AB2 ▼ **NON-CONFIGURABLE KIT**

Analyte	Total	Phosphorylated
BRAF		✓ (Ser446) H, M, R
CRAF		✓ (Ser338) H, M, R
MEK1		✓ (Ser217/221) H, M, R
Ras	✓	H, M, R
RasG12D	✓	H
RasG12V	✓	H

Src Family Kinase Active Site (Phosphoprotein) – 8 Plex(Cat. No. 48-650MAG) AB2 ▼ **NON-CONFIGURABLE KIT**

Analyte	Total	Phosphorylated
Blk		✓ (Tyr389) H
Fgr		✓ (Tyr412) H, R
Fyn		✓ (Tyr420) H, M, R
Hck		✓ (Tyr411) H, M
Lck		✓ (Tyr394) H, M, R
Lyn		✓ (Tyr397) H, R
Src		✓ (Tyr419) H, M, R
Yes		✓ (Tyr421) H, M, R

STAT (Phosphoprotein) – 5 Plex(Cat. No. 48-610MAG) AB2 ▼ **NON-CONFIGURABLE KIT**

Analyte	Total	Phosphorylated
STAT1		✓ (Tyr701) H, M
STAT2		✓ (Tyr690) H
STAT3		✓ (Tyr705) H, M, R
STAT5A/B		✓ (Tyr694/699) H, M, R
STAT6		✓ (Tyr641) H

T-Cell Receptor (Phosphoprotein) – 7 Plex(Cat. No. 48-690MAG) AB2 ▼ ●●● **NON-CONFIGURABLE KIT**

Analyte	Total	Phosphorylated	
CD3ε		✓ (pan Tyr)	H
CREB		✓ (Ser133)	H, M, R
Erk/MAPK 1/2		✓ (Thr185/Tyr187)	H, M, R
LAT		✓ (pan Tyr)	H
Lck		✓ (pan Tyr)	H, M, R
Syk		✓ (pan Tyr)	H
ZAP-70		✓ (pan Tyr)	H

TGFβ – 6 Plex(Cat. No. 48-614MAG) AB2 ▼ ●●● **NON-CONFIGURABLE KIT**

Analyte	Total	Phosphorylated	
Akt/PKB		✓ (Ser473)	H, M, R
Erk/MAPK 1/2		✓ (Thr185/Tyr187)	H, M, R
SMAD2		✓ (Ser465/467)	H, M, R
SMAD3		✓ (Ser423/425)	H, M, R
SMAD4	✓		H, M, R
TGFβRII	✓		H

Akt Phospho/Total – 2 Plex(Cat. No. 48-618MAG) AB2 ▼ * ●●● **NON-CONFIGURABLE KIT**

Analyte	Total	Phosphorylated	
Akt/PKB		✓ (Ser473)	H, M, R
Akt/PKB	✓		H, M, R

Akt1 Phospho/Total – 2 Plex(Cat. No. 48-631MAG) AB2 ▼ * ●●● **NON-CONFIGURABLE KIT**

Analyte	Total	Phosphorylated	
Akt1		✓ (Ser473)	H, M, R
Akt1	✓		H, M, R

Akt2 Phospho/Total – 2 Plex(Cat. No. 48-632MAG) AB2 ▼ * ●●● **NON-CONFIGURABLE KIT**

Analyte	Total	Phosphorylated	
Akt2		✓ (Ser474)	H, M, R
Akt2	✓		H, M, R

CREB Phospho/Total – 2 Plex(Cat. No. 48-628MAG) AB2 ▼ ●●● **NON-CONFIGURABLE KIT**

Analyte	Total	Phosphorylated	
CREB		✓ (Ser133)	H, M, R
CREB	✓		H, M, R

Erk/MAPK 1/2 Phospho/Total – 2 Plex(Cat. No. 48-619MAG) AB2 ▼ ●●● **NON-CONFIGURABLE KIT**

Analyte	Total	Phosphorylated	
Erk/MAPK 1/2		✓ (Thr185/Tyr187)	H, M, R
Erk/MAPK 1/2	✓		H, M, R

JNK Phospho/Total – 2 Plex(Cat. No. 48-622MAG) AB2 ▼ ●●● **NON-CONFIGURABLE KIT**

Analyte	Total	Phosphorylated	
JNK/SAPK1		✓ (Thr183/Tyr185)	H, M, R
JNK/SAPK1	✓		H, M, R

mTOR Phospho/Total – 2 Plex(Cat. No. 48-625MAG) AB2 ▼ ●●● **NON-CONFIGURABLE KIT**

Analyte	Total	Phosphorylated	
mTOR		✓ (Ser2448)	H, M, R
mTOR	✓		H, M

p38 Phospho/Total – 2 Plex(Cat. No. 48-624MAG) AB1 or AB2 ▼ ●●● **NON-CONFIGURABLE KIT**

Analyte	Total	Phosphorylated	
p38/SAPK2A/B		✓ (Thr180/Tyr182)	H, M, R
p38/SAPK2A/B	✓		H, M, R

STAT3 Phospho/Total – 2 Plex(Cat. No. 48-623MAG) AB2 ▼ ●●● **NON-CONFIGURABLE KIT**

Analyte	Total	Phosphorylated	
STAT3		✓ (Tyr705)	H, M, R
STAT3	✓		H, M, R

MAPmate™ Singleplex Loading Control Assays

Plex loading control MAPmate™ assays into existing MILLIPLEX® Cell Signaling Panels. Our Cell Signaling Buffer and Detection Kit (Cat. No. 48-602MAG), may be purchased if additional buffers are required.

MAPmate™ Kits	Species Homology (Buffer)	Cat. No.
β-Tubulin (total)	H, M, R (AB1 & AB2)	46-713MAG
GAPDH (total)	H (AB2)	46-667MAG

- Can be plexed with other 2 Plexes
- * Cannot plex with other phospho Akt
- ▼ Premix panel only

AB1: Uses Assay Buffer 1
AB2: Uses Assay Buffer 2

H Human
M Mouse
R Rat

Luminex® Multiplexing Platforms

Driving Assay Consistency

Combined with the largest portfolio of multiplex analytes available, we provide you the power of Luminex® xMAP® technology, the most trusted, widely used platform for biomarker screening and protein analysis. As a Luminex® partner, we are a preferred distributor of Luminex® instruments, accessories, and software.

Luminex® xMAP® technology offers many advantages compared to other immunoassay methods:

- **Multiplexing:** Data generated simultaneously is less prone to user error, enabling the end-user to construct cleaner data sets to explore multiple parameters.
- **Low sample volume:** With minimal hands-on time, screen multiple analytes in a single sample using a maximum of 25 µL per well.
- **Magnetic bead-based format:** Responds rapidly and efficiently to a magnetic field, enabling better and faster washing techniques, including high-throughput washing options.
- **Reproducibility:** High-volume production of xMAP® microspheres allows assay standardization that solid-phased flat arrays cannot provide.
- **Speed/high-throughput:** Simultaneously measure the concentration of a large number of different analytes in a single sample, in 96- or 384-well format, to do your work faster, gaining early and comprehensive data.



Specifications

Instruments	xMAP® INTELLIFLEX® DR-SE*	xMAP® INTELLIFLEX®	FLEXMAP 3D®	Luminex® 200™
Cat. No.	INTELLIFLEX-DRSE	INTELLIFLEX-RU0	40-014	40-012
Optics Hardware	Lasers/APDs/PMTs	Lasers/APDs/PMTs	Lasers/APDs/PMTs	Lasers/APDs/PMTs
Technology	Flow-based	Flow-based	Flow-based	Flow-based
Multiplexing	Up to 500	Up to 500	Up to 500	Up to 100 (80 on MagPlex® microspheres)
Dynamic Range**	≥5.5 logs (RP1) ≥4.5 logs (RP2)	≥5.5 logs (RP1)	≥4.5 logs (RP1)	≥3.5 logs (RP1)
Read Time	96-well in ~20 min 384-well in ~75 min	96-well in ~20 min 384-well in ~75 min	96-well in ~20 min 384-well in ~75 min	96-well in ~45 min
Applications	Protein/nucleic acid	Protein/nucleic acid	Protein/nucleic acid	Protein/nucleic acid
Automation-Compatible Hardware	Front and side eject	Front eject only	Front eject only	Front eject only
Reporter Laser	532 nm (green) 405 nm (violet)	532 nm (green)	532 nm (green)	532 nm (green)
IQ/OQ	Yes	Yes	Yes	Yes
21 CFR Compliance	Yes	Yes	Yes	Yes
Automation	Yes	Yes	Yes	Yes
Data Analysis	Belysa® software	Belysa® software	xPONENT® basic + Belysa® software	xPONENT® basic + Belysa® software
Plate Format	96-well and 384-well	96-well and 384-well	96-well and 384-well	96-well
Footprint (Linear Bench Space, including PC)	58.4 cm x 61 cm x 76.2 cm	58.4 cm x 61 cm x 76.2 cm	110 cm x 62 cm x 63 cm	115 cm x 60 cm x 50 cm
Weight	54.4 kg (120 lbs)	54.4 kg (120 lbs)	77.1 kg (170 lbs)	49 kg (113 lbs)

*DR-SE = dual reporter side eject; **RP = reporter

Luminex® 200™ and FLEXMAP 3D® systems run on the Luminex® xPONENT® 4.3 data acquisition platform; the xMAP® INTELLIFLEX® systems run on INTELLIFLEX 1.0. All systems provide a consistent experience, from data input to results, no matter which instrument is used. All software adapts to fit the capabilities of each platform.

Next Generation Multiplexing

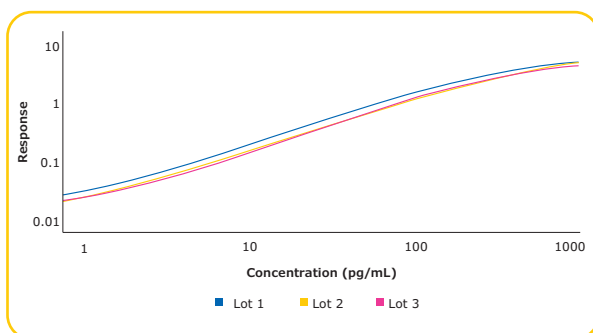
Harness the power of the xMAP® INTELLIFLEX® system at SigmaAldrich.com/intelliflex



Conferma[®] ELISAs

Conferma[®] ELISAs are developed with a focus on critical reagents to deliver assays with excellent detectability, sensitivity, and lot-to-lot consistency.

Analyte	Std. Range (pg/mL)	LLOQ (Curve) (pg/mL)	Cat. No.
IL-6 (Human)	1.17 – 150	1.17	EZIL6-98K
IL-8 (Human)	0.82 – 200	0.82	EZHIL8-100K
MCP-1 (Human)	7.81 – 1,000	7.81	EZMCP1-99KRM
TNF- α (Human)	1.65 – 400	1.65	EZHTNFA-150K



Three lots of the TNF- α Conferma[®] ELISAs were evaluated for parallelism. Variation was minimal demonstrating consistent lot-to-lot performance.

Curve	Parallelism
Lot 2 vs. Lot 1	0.983
Lot 3 vs. Lot 1	0.992

ELISAs Designed For Consistency

Get details on Conferma[®] ELISA performance and see the difference for yourself at: SigmaAldrich.com/conferma



Millipore[®] Brand ELISAs

Metabolic/Endocrine/ELISAs	Species	Standard Curve Range	Sensitivity	Sample Volume	Cat. No.	Bulk Packaging Cat. No.*
Adiponectin	Human	1.56–200 ng/mL	0.2 ng/mL	10 μ L	EZHADP-61K	EZHADP-61BK
Adiponectin (High Molecular Weight)	Human	1.5–200 ng/mL	0.5 ng/mL	10 μ L	EZHMWAN-65K	
Adiponectin	Mouse	1–50 ng/mL	0.2 ng/mL	10 μ L	EZMADP-60K	EZMADP-60BK
Amylin (active)	Human	1–100 pM	0.7 pM	50 μ L	EZHA-52K	
C-Peptide	Human	0.2–20 ng/mL	0.05 ng/mL	10 μ L	EZHCP-20K	EZHCP-20BK
C-Peptide	Canine	0.2–10 ng/mL	0.24 ng/mL	25 μ L	EZCCP-47K	
C-Peptide 2	Mouse, Rat	25–1,600 pM	15.0 pM	20 μ L	EZRMCP2-21K	
C-Reactive Protein (CRP)	Human	0.12–10 ng/mL	0.2 ng/mL	2 μ L	CYT298	
C-Reactive Protein (CRP)	Rat	4.9–10 ng/mL	2.5 ng/mL	2 μ L	CYT294	
FGF-21	Human	31.25–2,000 pg/mL	10.0 pg/mL	50 μ L	EZHFGF21-19K	
FGF-21	Mouse, Rat	49.4–12,000 pg/mL	10.0 pg/mL	10 μ L	EZRMFGF21-26K	
FGF-23	Human	9.9–2,400 pg/mL	3.5 pg/mL	50 μ L	EZHFGF23-32K	EZHFGF23-32BK
Ghrelin (active)	Human	25–2,000 pg/mL	15.0 pg/mL	20 μ L	EZGRA-88K	EZGRA-88BK
Ghrelin (active)	Mouse, Rat	25–2,000 pg/mL	8.0 pg/mL	20 μ L	EZRGRA-90K	
Ghrelin (total)	Human	100–5,000 pg/mL	50.0 pg/mL	20 μ L	EZGRT-89K	EZGRT-89BK
Ghrelin (total)	Mouse, Rat	0.1–10 ng/mL	0.04 ng/mL	20 μ L	EZRGR-91K	
GIP (total)	Human	8.2–2,000 pg/mL	4.2 pg/mL	20 μ L	EZHGIP-54K	EZHGIP-54BK
GIP (total)	Mouse, Rat	8.2–2,000 pg/mL	4.2 pg/mL	10 μ L	EZRMGIP-55K	EZRMGIP-55BK
GLP-1 (active)	Multi-Species	2–100 pM	1.0 pM	100 μ L	EGLP-35K	EGLP-35BK
GLP-1 High Sensitivity (active) Δ ••	Multi-Species	See data sheet	0.14 pM	50 μ L	EZGLPHS-35K	EZGLPHS-35BK
GLP-1 (total)	Multi-Species	4.1–1,000 pM	1.0 pM	20–50 μ L	EZGLP1T-36K	EZGLP1T-36BK

Metabolic/Endocrine/ ELISAs	Species	Standard Curve Range	Sensitivity	Sample Volume	Cat. No.	Bulk Packaging Cat. No.*
GLP-2	Multi-Species	1–64 ng/mL	0.3 ng/mL	50 µL	EZGLP2-37K	
Glucagon Δ	Human, Mouse, Rat	0.02–2 ng/mL	0.003 ng/mL	150–300 µL	EZGLU-30K	EZGLU-30BK
Growth Hormone (GH)	Mouse, Rat	0.7–50 ng/mL	0.07 ng/mL	10 µL	EZRMGH-45K	EZRMGH-45BK
Insulin	Human	2–200 µU/mL	1.0 µU/mL	20 µL	EZHI-14K	EZHI-14BK
Insulin	Mouse, Rat	0.2–10 ng/mL	0.1 ng/mL	10 µL	EZRMI-13K	EZRMI-13BK
Leptin	Canine	0.78–50 ng/mL	0.21 ng/mL	20 µL	EZCL-31K	
Leptin	Mouse	0.2–30 ng/mL	0.05 ng/mL	10 µL	EZML-82K	EZML-82BK
Leptin	Rat	0.2–30 ng/mL	0.08 ng/mL	10 µL	EZRL-83K	EZRL-83BK
Leptin “Dual Range”	Human	0.5–100 ng/mL	0.2 ng/mL	25 µL	EZHL-80SK	EZHL-80BK
Procollagen Type IIA N-Propeptide (PIIANP)	Human	lot dependent	30.0 ng/mL	5 µL	EZPIIANP-53K	
Proinsulin (total)	Human	2–200 pM	0.5 pM	20 µL	EZHPI-15K	EZHPI-15BK
PYY (total)	Human	10–2,000 pg/mL	6.5 pg/mL	20 µL	EZHPYYT66K	
Resistin	Human	0.16–5 ng/mL	0.02 ng/mL	20 µL	EZHR-95K	EZHR-95BK
SAA-3	Mouse	0.078–5 µg/mL	0.078 µg/mL	10 µL	EZMSAA3-12K	

Neuroscience ELISAs	Species	Standard Curve Range	Sensitivity	Sample Volume	Cat. No.
Amyloid beta 1-40	Human	16–500 pg/mL	4 pg/mL	50 µL	EZHS40
Amyloid beta 1-42	Human	16–500 pg/mL	5 pg/mL	50 µL	EZHS42
Amyloid beta, Set	Human	Contains 1 each of EZHS40 and EZHS42			EZHS-SET
Amyloid beta (Brain) 1-40	Human	16–500 pg/mL	4 pg/mL	50 µL	EZBRAIN40
Amyloid beta (Brain) 1-42	Human	16–500 pg/mL	5 pg/mL	50 µL	EZBRAIN42
Amyloid beta (Brain), Set	Human	Contains 1 each of EZBRAIN40 and EZBRAIN42			EZBRAIN-SET
BDNF (Brain-Derived Neurotrophic Factor)	Human, Rat	7.8–500 pg/mL	7.8 pg/mL	50 µL	CYT306
GFAP (Glial Fibrillary Acidic Protein)	Human, Mouse, Rat	1.5–100 ng/mL	1.5 ng/mL	100 µL	NS830
NPY (Neuropeptide Y)	Human	5–1,000 pg/mL	2 pg/mL	50 µL	EZHNPY-25K
NPY (Neuropeptide Y)	Mouse, Rat	0.01–2 ng/mL	0.004 ng/ mL	20 µL	EZRMNPY-27K
PEDF (Pigment Epithelium-Derived Factor)	Human	0.9–62.5 ng/mL	0.9 ng/mL	50 µL	CYT420
Phosphorylated Neurofilament, (pNF-H) Sandwich	Multi- Species	0.0293–15 ng/mL	0.0585 ng/ mL	1–10 µL	NS170
S100B	Human	2.7–2,000 pg/mL	1.3 pg/mL	50 µL	EZHS100B-33K

* Bulk packaging available on select kits — more environmentally friendly and saves space (10 kit equivalent)

• Preferred assay for measuring GLP-1 (active)

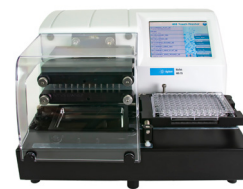
Δ Chemiluminescent assay

Sigma-Aldrich® Brand ELISAs

We offer a portfolio of >1,300 ELISAs and EIAs, covering a diverse range of species, research areas, and sample types. Find your ELISA at SigmaAldrich.com/elisa



Ancillary Equipment to Optimize Your Assays



Instruments	BioTek® 405™ TSUVS Magnetic Washer	BioTek® 405™ TS Magnetic 96-Well Washer
Cat. No.	95-0004-06	40-092AB
Supported Technology	SMC® immunoassays MILLIPLEX® immunoassays	MILLIPLEX® immunoassays
Instrument Control	Touchscreen and computer software	Touchscreen and computer software
Features	<ul style="list-style-type: none"> • Custom magnetic plate specific for use with SMC® technology • Ultrasonic Advantage™ program and 4 buffer switching • Optimized cell wash including Shaking & Soaking 	<ul style="list-style-type: none"> • Supports 96-well magnetic bead washing • Ultrasonic Advantage™ program for maintenance • Quick menu for priming and washing
Wash Protocols	Pre-programmed with SMC® and MILLIPLEX® assay wash protocols	Predefined sample methods for easy operation
Plate Format	96-well for SMC® assays 96- and 384-well for MILLIPLEX® assays	96-well plates
Washer/Dispenser Options	Vacuum filtration, biomagnetic separation	Biomagnetic separation
Volume Range	50 – 3,000 µL/well	25 – 3,000 µL/well, in 1 µL increments
Residual Volume	≤ 2 µL per well	≤ 2 µL per well
Wash or Read Speed	300 µL/well, 3 cycles; ≤ 30 s	300 µL/well, 3 cycles; ≤ 30 s
Wash Cycles	1 to 250	1 to 250
Shaking	Programmable up to 60 min: slow, medium, fast, or variable	Programmable up to 60 min: slow, medium, fast, or variable
Automation Capability	BioSpa, BioStack, BenchCel, 3rd Party	BioTek® BioStack microplate stacker and 3rd Party
Footprint	14" W x 17" D x 10" H (35.6 x 43.2 x 25.4 cm)	14" W x 17" D x 10" H (35.6 x 43.2 x 25.4 cm)
Weight	With internal buffer switching: 36 lb (16.5 kg)	30 lb (13.5 kg)

Related Products

Description	Cat. No.
BioTek® 50™ TS Microplate Washer	40-301
BioTek® 800™ TS Absorbance Reader with Gen5™ Software	40-006
BioTek® MultiFlo™ FX Multimode Dispenser	40-999
SMC® Plate Washer Evaluation Kit	03-0165-00
Flat Magnet, for 96-Well Plates, for use with MILLIPLEX® Assays (and for use with Cat. No. 95-0004-06)	7103016
Flat Magnet, for 384-Well Plates, for use with MILLIPLEX® Assays (and for use with Cat. No. 95-0004-06)	7103017
Handheld Magnetic Bead Washer Separator Block for 96-Well Flat Bottom or Conical Well Plates	40-285
BioTek® 800™ TS Product Qualification Package (to be sold with Cat. No. 40-006)	1560516
Absorbance Test Plate (to be sold with Cat. No. 40-006)	7260522
Vacuum Filter 96-Well (to be sold with Cat. No. 40-092AB)	1170008

Enhance Your Workflows

Explore BioTek® washers for our platforms at SigmaAldrich.com/smc-washer and SigmaAldrich.com/milliplex-washer

Belysa® Immunoassay Curve Fitting Software

(Cat. No. 40-122)

Our proprietary software package for curve fitting, examination, and comparison of data acquired from a variety of immunoassay platforms. Belysa® software has been designed to provide an easy-to-use tool to optimize curve fit and confirm the integrity of data within a plate or across plates from multiple runs.

Key Features and Benefits

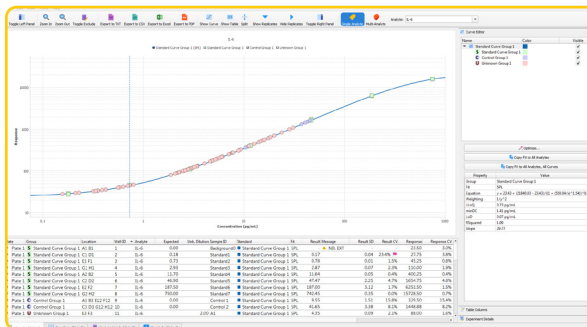
- User-friendly interface
- Automatic and manual curve fitting (4pl, 5pl, linear, competitive, cubic spline)
- Curve comparison tools
- Rules-based data flagging
- Suitable for use with RUO Luminex® instruments, SMCxPRO® platform, and ELISA .csv acquisition files
- Windows 10 and macOS (beta) compatible

Data displayed after selecting curve fit model:

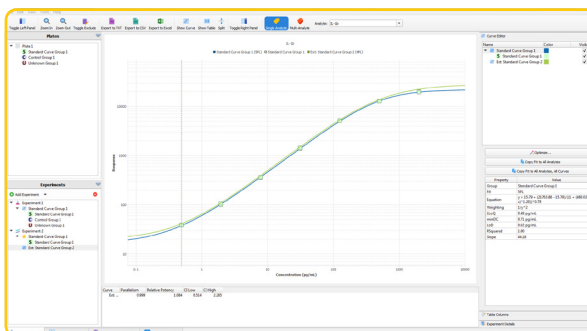
- Sample concentration
- Standard recovery
- Equation of line
- Limit of Detection (LOD)
- Lower Limit of Quantitation (LLOQ)
- Minimum Detectable Dose (MD)

Other features:

- Data is exportable to: Excel, .csv, .txt, and .pdf
- Data autoflagging based on bead count, %CV, or BLOQ
- Curve comparison tool to evaluate parallelism and relative potency of standards



Example 1. Simply drag and drop the .csv output file into the Belysa® browser for instant data review.



Example 2. Comparison of two standard curves in Belysa® software from two lots of the same MILLIPLEX® assay run 1 year apart.

Ready To Start Comparing Curves?

Get more details about Belysa® Software at: SigmaAldrich.com/belysa



CADI: Custom Assay Development & Innovation

Accelerate your research with custom SMC[®], MILLIPLEX[®], and ELISA assays designed for your specific biomarker needs.

We understand you don't always have the time, resources, or expertise to develop your own assay for your protein of interest. Rely on our vast development expertise and our ability to produce high-quality, reproducible immunoassays to help you accelerate your program from discovery research into clinical trials with a custom-designed solution.



Get started today!

View a complete listing of services at SigmaAldrich.com/customassay



Fit-For-Purpose Custom Assay Project Workflow

Develop a new SMC[®], MILLIPLEX[®], or ELISA assay which is fit for your purpose. We follow a milestone-based approach to generate an assay that quantifies your exact protein or proteins of interest. You will receive updates and data reviews during each milestone, offering you peace of mind that your project is on schedule and meeting specifications.



Example Custom Assay Offerings

Cat. No.	Description	Description
SPRCUS1014	Custom Human 384-Well Circulating Cancer Biomarker Panel 3 8-Plex	H (S/P, Sup, Lys)
SPRCUS1016	Custom Human 384-Well Angiogenesis Panel 2 20-Plex	H (S/P, Sup, Lys)
SPRCUS1042	Custom Human 384-Well Immuno-Oncology Checkpoint Protein Panel 17-Plex	H (S/P, Sup)

Custom MILLIPLEX® Analytes

Analyte	Species (Sample Types)
α-1 Antichymotrypsin	H (S/P)
α-2 Antiplasmin	H (S/P)
AGP (α 1-Acid Glycoprotein)	H (U)
Angiopoetin-1	H (S/P, T)
Anti-Cardiolipin antibody IgA	H (S/P)
Anti-EBV VCA IgG	H (S/P)
Anti-Phosphatidylserine IgG, IgM	H (S/P)
Antithrombin iii	H (S/P, Sup, Lys)
Apolipoprotein A-IV	H (S/P)
Arginase 1	M (S/P)
AXL (s)	M, R (S/P)
BAD (Ser112)	H, M (Lys)**
BCMA (B-cell Maturation Antigen)	H (S/P)
BMP-9	M, R (S/P)
BRD4	H, M, R (Lys)
Caspase 3 (Active)	H, M (Lys)**
CBP	H, M, R (Lys)
CD13 Aminopeptidase N	H (S/P)
CD163 (s)	H (S/P)
Ceruloplasmin	H (U)
Cleaved PARP (total)	H (Lys)**
CSTB (Cystatin B)	H (S/P)
Elafin	H (S/P)
Extracellular Matrix Protein (ECM1)	H (S/P, Sup, Lys)
FGF-23	M (S/P, Sup)
Fibronectin	H (S/P)
G3BP (Galectin 3 Binding Protein)	H (U)
Gas-6	H, M, R (S/P)
Granzyme A	M (S/P)
Gremlin	M, R (S/P)
GRP78	H (S/P)
HGFR/cMET	M, R (S/P)
I-FABP	H (S/P)
IGF-1	M, R (S/P)
IL-18	M, R (S/P)
IL-33R/ST2 (Suppressor of Tumorigenicity 2)	H (S/P)

Analyte	Species (Sample Types)
Insulin	F (S/P)
Involucrin	H (S/P)
IRS1 (Ser133)	H, M, R (S/P)
IRS1 (total)	H, M, R (S/P)
Keratin-1,10	H (S/P)
Keratin-6	H (S/P)
LPGDS (Lipocalin like prostaglandin D synthase)	H (U)
Lysozyme C	H (S/P)
MIP-1γ	M, R (S/P)
MR-proADM	H (S/P)
Osteoprotegrin (OPG)	M (S/P, Sup)
p300	H, M, R (Lys)
p38/SAPK2A/B (Thr180/Tyr182)	H, M, R (Lys)**
p38/SAPK2A/B (total)	H, M, R (Lys)**
Periostin	M, R (S/P)
PODXL	M, R (S/P)
Prealbumin (Transthyretin)	H (S/P)
Procalcitonin	H, M, R (S/P)
Prostaglandin D Synthase (lipocalin-type)	H (S/P, CSF, Sup)
Sclerostin (SOST)	M (S/P, Sup)
Semaphorin 3A	H (Sup)
STAT1 (total)	H, M (Lys)**
Tenascin C	M, R (S/P)
Testosterone	Mul (S/P, Sup)
Thyroxine Binding Globulin	H (S/P)
TRAIL	M, R (S/P)
Transferrin	H (U)
Vasopressin	M, R (P)
VE Cadherin/Cadherin 5	H (S/P)
Vitamin D Binding Protein	H (S/P, Sup, Lys)
Vitronectin	M, R (S/P)
Wnt-3a	H (S/P, Sup, Lys)
Zinc-α-2 Glycoprotein	H (S/P)

Species Key

H	Human
M	Mouse
R	Rat
F	Feline
Mul	Multi-Species

Sample Type Key

CSF	Cerebral Spinal Fluid
Lys	Cell/Tissue Lysates
S/P	Serum/Plasma
Sup	Cell/Tissue Culture Supernatants
T	Tears
U	Urine

Notations

s	Soluble analyte
**	No standard/QC; levels reported as MFIs (Median Fluorescence Intensities)

CUSTOM

CUSTOM ASSAY DEVELOPMENT & INNOVATION (CAD1)

FOR RESEARCH USE ONLY. NOT FOR USE IN DIAGNOSTIC PROCEDURES.

Beyond the Assay Development Workflow

In addition to our assay development services, we can support your other custom assay needs.

Our additional capabilities include:

Switching Formats

- MILLIPLEX® Assays: 96-well to 384-well
- SMC® Assays: bead-based to plate-based
- Converting MILLIPLEX® assays to SMC® assay platform

Sample Testing

- Prototype sample testing
- Proprietary kit sample testing (SMC® assays only)
- SMC® immunoassay kit testing (SMC® assays only)

Biotherapeutic Assay Development

- Pharmacokinetics
- Pharmacodynamics
- Immunogenicity

SMCxPlore™ Proof of Concept Sample Testing:

Use our SMCxPlore™ proof of concept sample testing service to “explore” SMC® technology with your analyte of interest or critical samples. Test up to 30 of your critical samples using one of our highly verified SMC® immunoassays.

Questions About CADI?

Explore our FAQs at SigmaAldrich.com/cadi-faqs





Beyond Biomarkers

Keep your focus on the next stage

Rigorous Assay Development

Specificity ●●

- Antibody specificity is tested to ensure negligible cross-reactivity in the tested sample types
- Assay specificity is ensured by confirming consistent performance in singleplex and multiplex formats

Method Comparisons ●●

- We test our kits against in-house kits and kits from other vendors when available, ensuring the highest performing kits

Selectivity ●●

- Assay buffers and bead diluents are optimized to enhance antibody binding to only those analytes of interest in samples

Detection and Sensitivity ●

- The assay range and minimum detectible concentrations (minDCs or LLOQ) for each analyte is published in our protocols, and is based on actual samples

Performance in a Sample Matrix ●

- Assays are verified for the sample type noted in the protocol; for serum/plasma sample kits, we provide an optimized serum matrix to mimic the environment of the sample, normalizing assay performance

Reproducible Results You Can Trust

Stability ●●

- All kits are rigorously tested for shipping stability to determine impact on each analyte
- Sample stability is examined at a range of temperatures, and by freeze/thaw

Precision ●●

- Precision of control standards are typically within 15% CV for intra-assay and 20% CV for inter-assay

Accuracy ●

- Spike recovery in sample is performed for each analyte at three concentrations; accuracy is normally within $\pm 30\%$

Dilution Linearity/Parallelism ●

- Diluted sample results must be directly proportional to the concentration of analyte in the sample, typically within $\pm 30\%$

Lot-to-Lot Consistency ●

- A “gold standard” calibrator is defined during assay development and used as a reference for all future production lots

We'll help you choose the right platform and assays to meet your needs today, and we'll partner with you to meet those needs in the future — without compromising quality.

- Screening Assays
- Qualified and Verified Assays

Millipore®

Preparation, Separation,
Filtration & Monitoring Products

MilliporeSigma
400 Summit Drive
Burlington, MA 01803

SigmaAldrich.com



Scan to download
a digital copy.



Keep up to date!

Don't miss out on updates by
signing up for our newsletter:
SigmaAldrich.com/analyteupdate

To place an order or receive technical assistance

Order/Customer Service: SigmaAldrich.com/order
Technical Service: SigmaAldrich.com/techservice
Safety-related Information: SigmaAldrich.com/safetycenter

We have built a unique collection of life science brands with
unrivalled experience in supporting your scientific advancements.

Millipore® Sigma-Aldrich® Supelco® Milli-Q® SAFC® BioReliance®

© 2024 Merck KGaA, Darmstadt, Germany and/or its affiliates. All Rights Reserved. MilliporeSigma, the vibrant M, Millipore, Sigma-Aldrich, Supelco, Milli-Q, SAFC, BioReliance, MILLIPLEX, MAPmate, SMCxPRO, Belysa, and Conferma are trademarks of Merck KGaA, Darmstadt, Germany or its affiliates. All other trademarks are the property of their respective owners. Detailed information on trademarks is available via publicly accessible resources.