

## Plant-based Food Testing

As the global population continues to rise, the demand for food sources that are sustainable, ethical, and nutritionally valuable is increasing. Alternative protein foods, such as plant-based meat substitutes, are emerging as viable solutions to address these challenges. However, the production of alternative protein foods presents unique challenges in terms of food safety, quality, and labeling. As leaders in the food testing industry, we understand the importance of ensuring the safety and quality of alternative protein products. In this flyer, we provide an overview of testing parameters related to food content and contamination, key testing applications and ingredient-specific compounds to consider when testing your alternative protein products.

### Food Properties

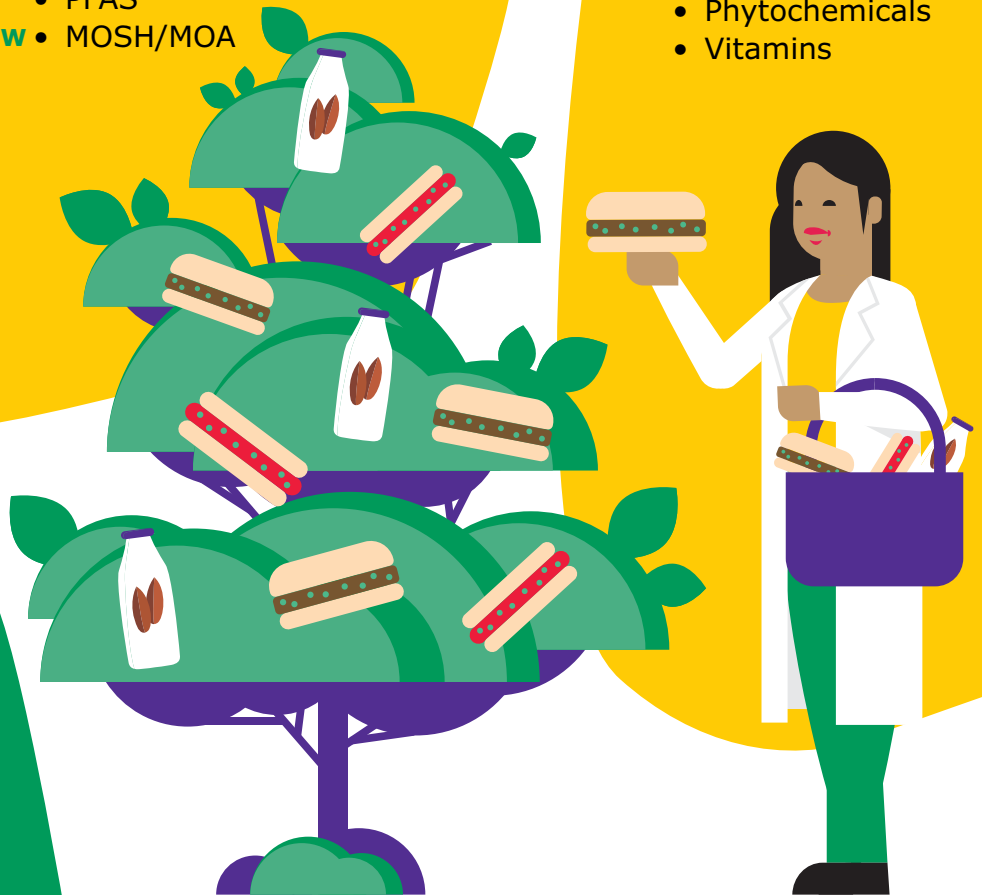
- Moisture
- pH
- Colour

### Food Content

- Carbs
- Fiber
- Protein
- Fats
- Additives
- GMO
- Allergens
- Phytochemicals
- Vitamins

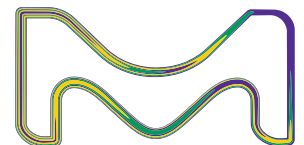
### Chemical Contaminants

- Pesticides
- Heavy Metals
- Mycotoxins
- PFAS
- NEW** • MOSH/MOA



### Key Applications

- Nitrite in Potato Powder
- Total Dietary Fiber Analysis Kit
- Lactic Acid



## Compounds of interest



SOY

- Heavy Metals (Nickel...)
- Pesticides (paraquat, glyphosate, phenoxyalkanecarboxylic acids...)
- Pyrrolizidine Alkaloids
- Tropane Alkaloids
- Isoflavones
- Soy allergens



ALMOND

- Hydrocyanic Acid
- Pesticides (Phosphonic Acid, Cypermethrin, Chlorpyrifos...)
- Phytic Acids



RICE

- Mineral oils (MOSH/MOA)
- Pesticides (tebucanazole, isoprothiolan, imidacloprid, tricyclazole...)
- Phytic Acids



OAT

- Fusarium Toxins (DON, T2-, HT2 Toxin), Ochratoxin A
- Pesticides (chlormequat, glyphosate...)
- Pyrrolizidine Alkaloids
- Tropane Alkaloids
- Phytic Acids

## Cultured Meat Offering

**The perfect recipe**

✓ Cultured Meat ✓ Sustainability ✓ Your Dedication to Safety

[Get In Touch](#)



To place an order or receive technical assistance:  
[SigmaAldrich.com/support](https://SigmaAldrich.com/support)



For local contact information:  
[SigmaAldrich.com/offices](https://SigmaAldrich.com/offices)

MilliporeSigma  
400 Summit Drive  
Burlington, MA 01803  
[SigmaAldrich.com](https://SigmaAldrich.com)

We have built a unique collection of life science brands with unrivalled experience in supporting your scientific advancements.

**Millipore® Sigma-Aldrich® Supelco® Milli-Q® SAFC® BioReliance®**

© 2024 Merck KGaA, Darmstadt, Germany and/or its affiliates. All Rights Reserved. MilliporeSigma, the vibrant M, BioReliance, Millipore, Milli-Q, SAFC, Sigma-Aldrich and Supelco are trademarks of Merck KGaA, Darmstadt, Germany or its affiliates. All other trademarks are the property of their respective owners. Detailed information on trademarks is available via publicly accessible resources.

MS\_FL12624EN 50188 06/2024

