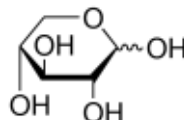


Certificate of Analysis

Product Name:

D-(+)-Xylose - BioXtra, ≥99%

Product Number: X3877
Batch Number: SLCL7752
Brand: SIAL
CAS Number: 58-86-6
MDL Number: MFCD00064360
Formula: C₅H₁₀O₅
Formula Weight: 150.13 g/mol
Quality Release Date: 22 NOV 2021



Test	Specification	Result
Appearance (Color)	White	White
Appearance (Form)	Powder	Powder
Solubility (Color)	Colorless	Colorless
Solubility (Turbidity)	Clear	Clear
1 M, H ₂ O		
Residue on ignition (Ash)	≤ 0.1 %	0.0 %
Ammonia (NH ₃)	≤ 0.05 %	< 0.00 %
Insoluble Matter	≤ 0.1 %	0.0 %
Chloride (Cl)	≤ 0.05 %	< 0.01 %
Sulfate (SO ₄)	≤ 0.05 %	< 0.01 %
Aluminum (Al)	≤ 0.0005 %	< 0.0005 %
Phosphorus (P)	≤ 0.0005 %	< 0.0005 %
Lead (Pb)	≤ 0.001 %	< 0.001 %
Calcium (Ca)	≤ 0.0005 %	< 0.0005 %
Magnesium (Mg)	≤ 0.0005 %	< 0.0005 %
Sodium (Na)	≤ 0.005 %	< 0.005 %
Iron (Fe)	≤ 0.0005 %	< 0.0005 %
Copper (Cu)	≤ 0.0005 %	< 0.0005 %
Zinc (Zn)	≤ 0.0005 %	< 0.0005 %
Potassium (K)	≤ 0.005 %	< 0.005 %
Purity (GC)	≥ 99 %	99 %

Sigma-Aldrich warrants, that at the time of the quality release or subsequent retest date this product conformed to the information contained in this publication. The current Specification sheet may be available at Sigma-Aldrich.com. For further inquiries, please contact Technical Service. Purchaser must determine the suitability of the product for its particular use. See reverse side of invoice or packing slip for additional terms and conditions of sale.



Certificate of Analysis

Product Number: X3877
Batch Number: SLCL7752



Brian Dulle, Supervisor
Quality Assurance
St. Louis, Missouri US

Sigma-Aldrich warrants, that at the time of the quality release or subsequent retest date this product conformed to the information contained in this publication. The current Specification sheet may be available at Sigma-Aldrich.com. For further inquiries, please contact Technical Service. Purchaser must determine the suitability of the product for its particular use. See reverse side of invoice or packing slip for additional terms and conditions of sale.

